

CLOSER MOUNTS ON HINGE(PUSH) SIDE OF DOOR

PR70 SERIES

Template for PARALLEL ARM INSTALLATION ANTI-CLOCKWISE OPENING (LEFT HAND DOOR-PUSH SIDE)

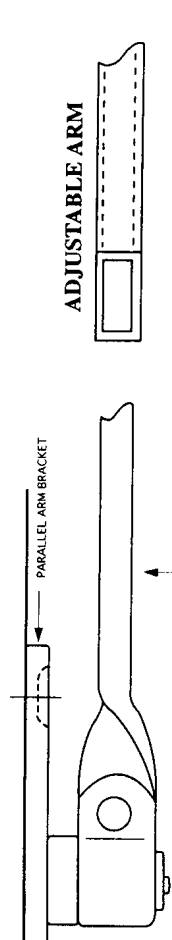
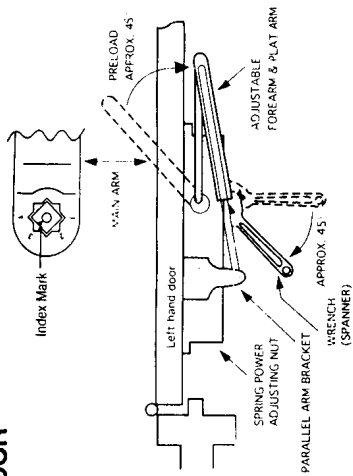
CNL
C.R. LAURENCE CO., INC.
Locations to Serve the Industrial
Throughout North America/Europe

Glazing, Industrial, Construction
and Automotive Supplies
Phone Toll Free (800)421-6144
Fax Toll Free (800)262-3299
Cant. Warehouse 0.9km, 58213, Unit 10, Highway 102, St. Catharines, ON L2R 7K1
Website: www.cnl.com

FIXING SEQUENCE

FIX CLOSER BODY TO DOOR. FIT PARALLEL ARM BRACKET TO UNDERSIDE OF HEAD STOP WITH SPIGOT DOWNWARDS.
REMOVE ARM SHOE FROM FLAT ARM/ARM SHOE ASSEMBLY. MOUNT FLAT ARM ONTO SPIGOT ON PARALLEL ARM BRACKET
AND RETAIN WITH SCREW/WASHER SUPPLIED. SLIDE CHANNEL SECTION OF ADJUSTABLE ARM/MAIN ARM ASSEMBLY ONTO
FLAT ARM WITH SPANNER/TURN SQUARE SHAFT AT BOTTOM OF CLOSER APPROXIMATELY 45° TOWARDS HINGE EDGE OF DOOR
AND HOLD. ALIGN "R" AND INDEX MARK. PLACE MAIN ARM ONTO PINION SHAFT AND SECURE WITH SCREW/WASHER PROVIDED.
POSITION ADJUSTABLE ARM PARALLEL TO DOOR FACE (See illustration), AND SECURE ADJUSTMENT WITH SCREW/WASHER SUPPLIED.
AFTER ADJUSTMENT OF THE VALVES: SNAP PINION CAP OVER SHAFT AT BOTTOM OF CLOSER AND FIX RECTANGULAR COVER WITH
TWO SCREWS INTO BOTH END SIDE OF CLOSER BODY.

IN CASE OF SOFT LINE FULL COVER, SLIDE COVER/INSERT INTO THE UNUSED CUTOOUT IN COVER.
FIX WITH PROVIDED SCREW FROM TOP SIDE OF COVER. PINION CAP IS NOT NECESSARY.



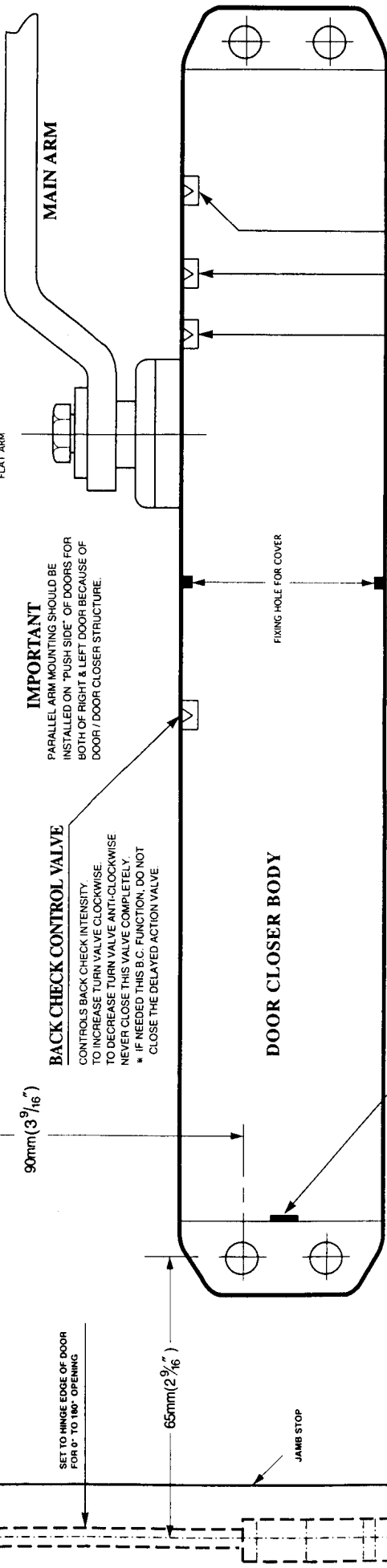
UNIT = mm (inches)

IMPORTANT

PARALLEL ARM MOUNTING SHOULD BE
INSTALLED ON "PUSH SIDE" OF DOORS FOR
BOTH OF RIGHT & LEFT DOOR BECAUSE OF
DOOR / DOOR CLOSER STRUCTURE.

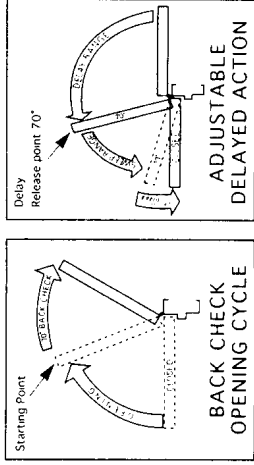
BACK CHECK CONTROL VALVE

CONTROLS BACK CHECK INTENSITY
TO INCREASE TURN VALVE CLOCKWISE
TO DECREASE TURN VALVE ANTI-CLOCKWISE
NEVER CLOSE THIS VALVE COMPLETELY.
* IF NEEDED THIS B.C. FUNCTION, DO NOT
CLOSE THE DELAYED ACTION VALVE



POWER ADJUSTMENT CHART FOR DOOR SELECTIONS

PR70 SERIES PARTS SERIES SIZE (1/2"-3")	CLOCKWISE TURNS OF ADJUSTING NUT SIZE (1/2"-3")	APPLICABLE DOOR SIZE (WING OUT)	APPLICABLE DOOR WEIGHT	PR70 SERIES PARTS SERIES SIZE (1/2"-3")	CLOCKWISE TURNS OF ADJUSTING NUT SIZE (1/2"-3")	APPLICABLE DOOR SIZE (WING OUT)	APPLICABLE DOOR WEIGHT
1/2	9	N/A	22-33 Lbs (10-15 kg)	1	6	N/A	187-264 Lbs (85-120 kg)
1	6	N/A	33-66 Lbs (15-30 kg)	2	3	N/A	264-330 Lbs (120-150 kg)
2	2	36" (0.91m)	66-99 Lbs (30-45 kg)	3	0	42" (1.07m)	99-143 Lbs (45-65 kg)
3	0	42" (1.07m)	99-143 Lbs (45-65 kg)	4	3	48" (1.22m)	143-167 Lbs (65-85 kg)
Not Recommended Use	N/A	54" (1.37m)	167-264 Lbs (85-120 kg)	5	N/A	54" (1.37m)	167-264 Lbs (85-120 kg)
Not Recommended Use	N/A	56" (1.47m)	264-330 Lbs (120-150 kg)	6	N/A	56" (1.47m)	264-330 Lbs (120-150 kg)



CAUTION!

DO NOT TURN ADJUSTING VALVES MORE THAN TWO FULL TURNS ANTI-CLOCKWISE FROM THE FACTORY SET POSITION. CLOSING ARCS "SWEEP" AND "LATCH" ARE CONTROLLED BY TWO SEPARATE VALVES. FIRST "SWEEP" THEN "LATCH" FOLLOWED BY "DELAY" AND LAST "BACK CHECK". TO INCREASE SPEED TURN VALVE ANTI-CLOCKWISE. TO DECREASE SPEED TURN VALVE CLOCKWISE. ADJUST VALVES WITH HEX KEY SUPPLIED.

* 3 MEANS 3 TURNS TO ANTI-CLOCKWISE