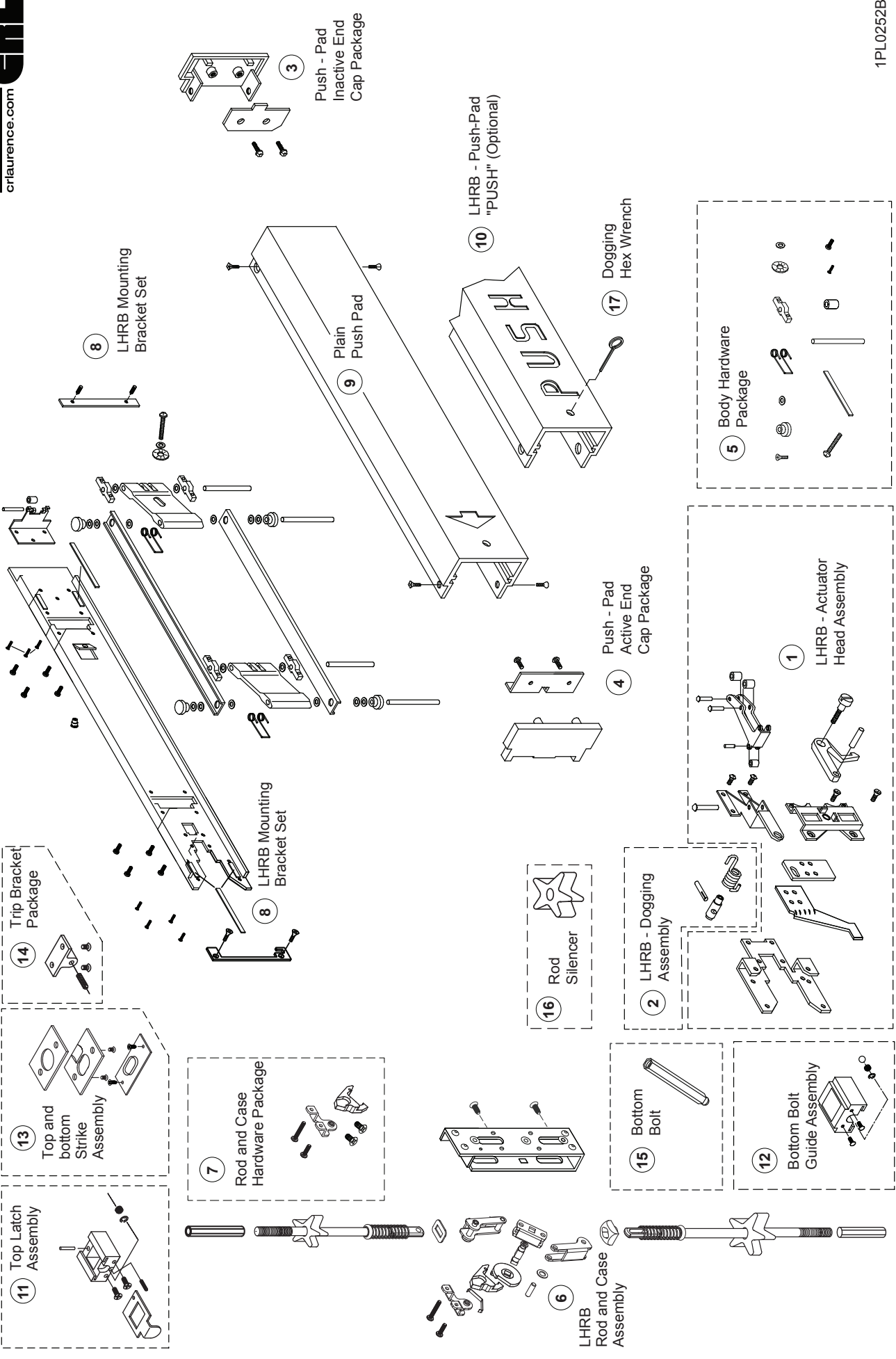


**COMPONENT PARTS**



1PL0252B

## COMPONENT PARTS

Assembly No.	Part No.	Description	Specify Finish No.
1	30093	LHRB - Actuator Head Assembly	
Not Shown	30094	RHRB - Actuator Head Assembly	
2	30092	Dogging Assembly	
3	30086	Push-Pad Inactive End Cap Assembly	US28/628, DBZ/313
4	30089	Push-Pad Active End Cap Assembly	US28/628, DBZ/313
5	30085	Body Hardware Package	
6	30077J	LHRB-Rod and Case Assembly-7/0	
Not Shown	30080J	RHRB-Rod and Case Assembly-7/0	
7	30090	Rod and Case Hardware Package	
8	30095	LHRB-Mounting Bracket Set	
Not Shown	30096	RHRB-Mounting Bracket Set	
9	30023	LHRB-Push-Pad - Plain - Non-Handed	US28/628, DBZ/313
10	300041L	LHRB-Push-Pad - "PUSH" (Optional)	US28/628, DBZ/313
Not Shown	300041R	RHRB-Push-Pad - "PUSH" (Optional)	
11	30934	Top Bolt Guide Assembly	US28/628, DBZ/313
12	30320	Bottom Bolt Guide Assembly	US28/628, DBZ-BLK/624
13	301084	Strike Package - Top and Bottom	US28/628, DBZ/313
14	30824	Trip Bracket Package	
15	30763P	Top or Bottom Rod Bolt	
16	301552PKG	Rod Silencers (12 Pkg.)	
17	302796	Dogging Hex Key Package (2 Pkg.)	
Not Shown	301347	Top Rod Extension - 12"	
Not Shown	301348	Top Rod Extension - 24"	
Not Shown	30PBAW	Bolt Adjustment Wrench	