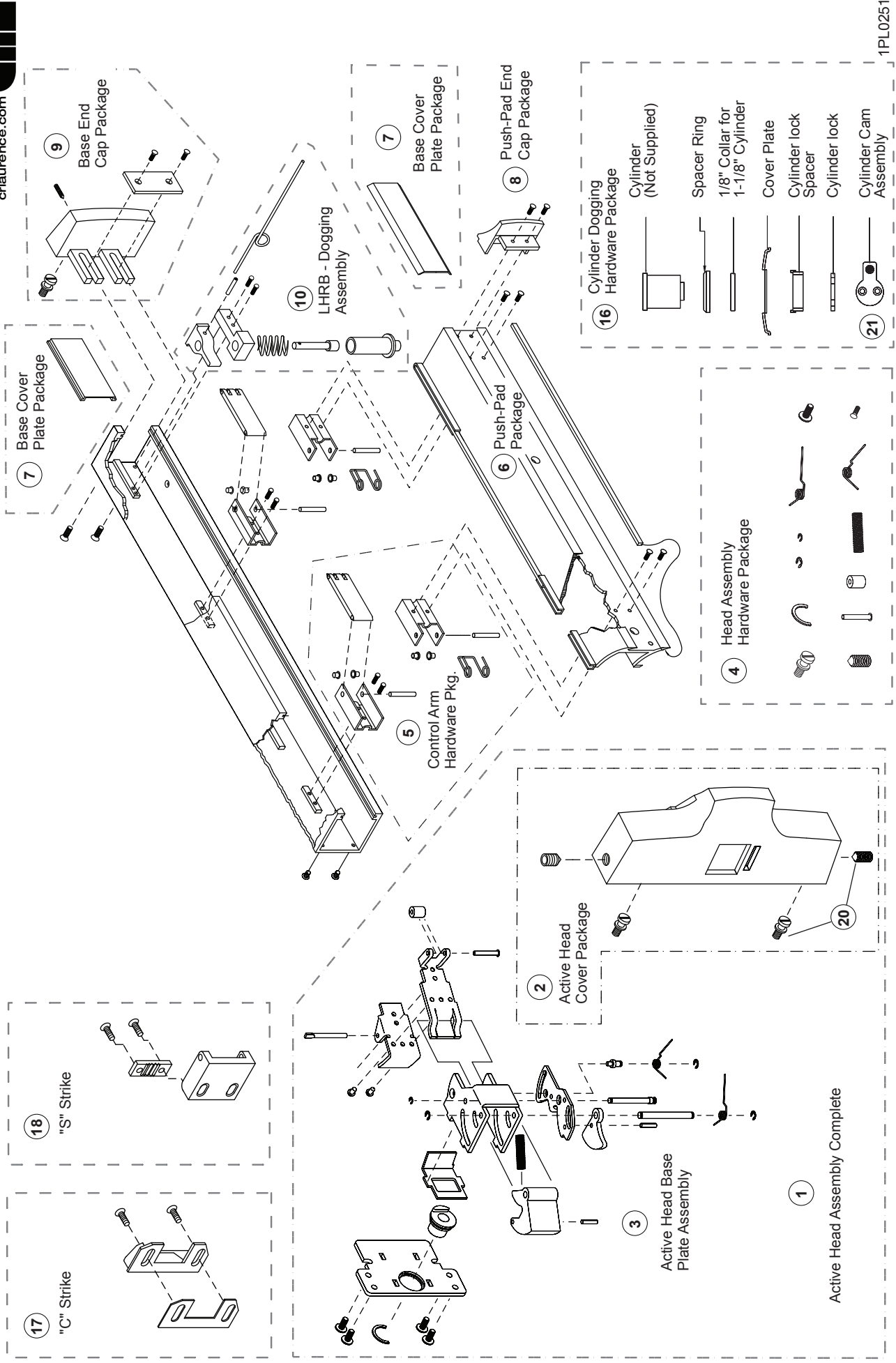


COMPONENT PARTS



1PL0251

COMPONENT PARTS

Assembly No.	Part No.	Description	Specify Finish No.
1	302622	Active Head Assembly – Complete	US28/628, DBZ/313
2	302627	Active Head Assembly Cover Package	US28/628, DBZ/313
3	302635	Active Head Base Plate Assembly	
4	302610	Head Assembly Hardware Package	
5	301064	Control Arm Hardware Package	
6	302480PKG	Push-Pad Package	US28/628, DBZ/313
7	301063	Base Cover Plate Package	US28/628, DBZ/313
8	301265	Push-Pad End Cap Package	US28/628, DBZ/313
9	301266	Base End Cap Package	US28/628, DBZ/313
10	302467	LHRB - Dogging Assembly	
Not Shown	302462	RHRB - Dogging Assembly	
16	302671	Cylinder Dogging Hardware Package	US28/628, DBZ/313
17	302436628	"C" Type - Surface Mounted Strike	
18	302501	"S" Type - Surface Mounted Strike	US28/628, DBZ/313
21	302572PKG	Cylinder Dogging Cam Package (6 Pkg.)	
20	30SBPKG	Mounting Shoulder Bolt and Set Screw Package (12 ea.)	