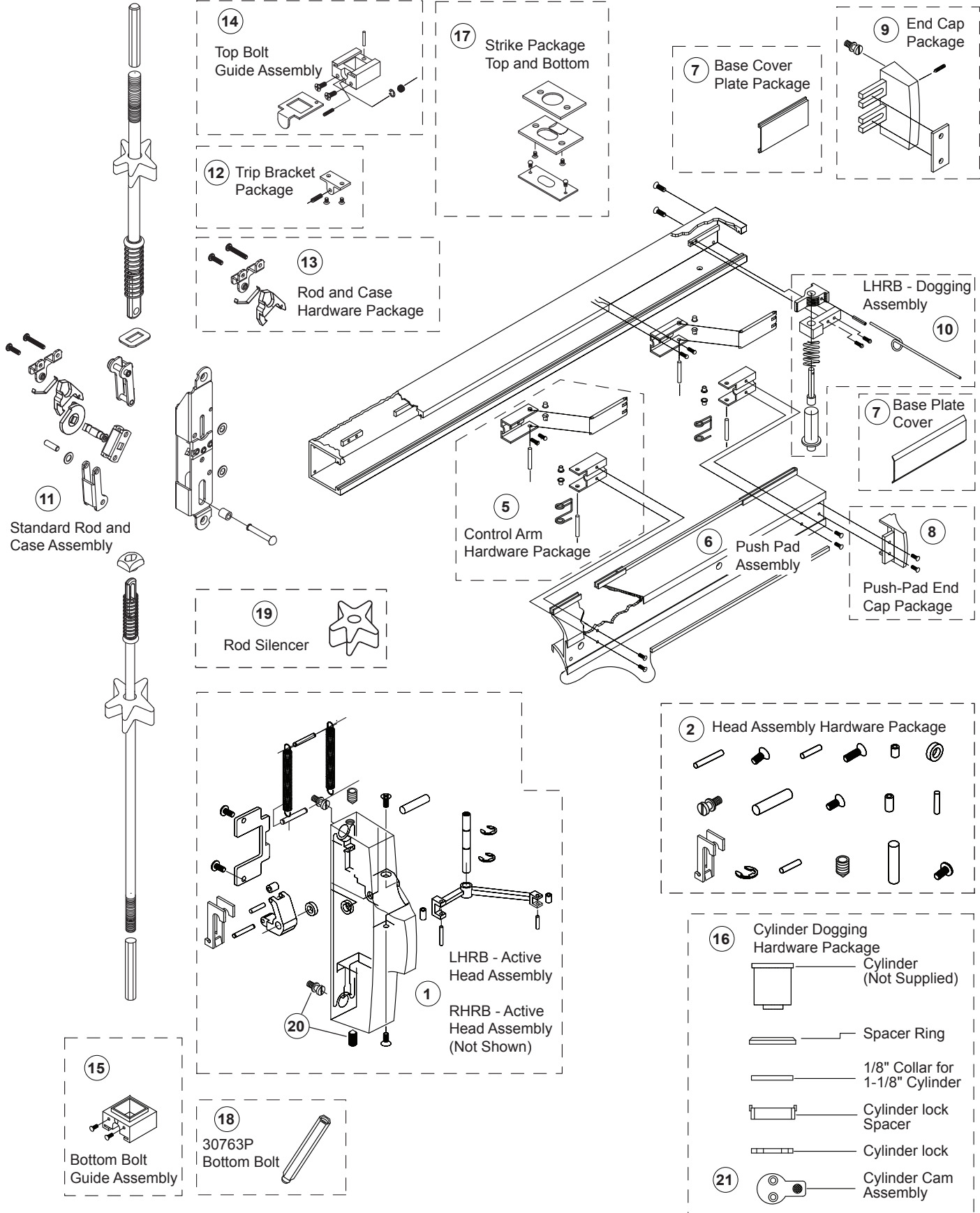


COMPONENT PARTS



COMPONENT PARTS

Assembly No.	Part No.	Description	Specify Finish No.
1	302617	LHRB - Active Head Assembly	US28/628, DBZ/313
Not Shown	302619	RHRB - Active Head Assembly	US28/628, DBZ/313
2	302607	Head Assembly Hardware Package	
5	301064	Control Arm Hardware Package	
6	302480PKG	Push-Pad Assembly	US28/628, DBZ/313
7	301063	Base Cover Plate Package	US28/628, DBZ/313
8	301265	Push-Pad End Cap Package	US28/628, DBZ/313
9	301266	Base End Cap Package	US28/628, DBZ/313
10	302467	LHRB - Dogging Assembly	
Not Shown	302462	RHRB - Dogging Assembly	
11	30915J	Standard Rod and Case Assembly - 7/0	
12	30824	Trip Bracket Package	
13	30916	Rod and Case Hardware Package	
14	30934	Top Bolt Guide Assembly	
15	30320	Bottom Bolt Guide Assembly	US28/628, DBZ/313
16	302671	Cylinder Dogging Hardware Package	US28/628, DBZ/313
17	301084	Strike Package - Top and Bottom	US28/628, DBZ/313
18	30763P	Standard Top or Bottom Bolt	
19	301552PKG	Rod Silencers (12 pkg.)	
20	30SBPKG	Mounting Shoulder Bolt and Set Screw Package (12 ea.)	
21	302572	Cylinder Dogging Cam	
Not Shown	301347	Top Rod Extension - 12"	
Not Shown	301348	Top Rod Extension - 24"	
Not Shown	30PBAW	Bolt Adjustment Wrench	
Not Shown	302954	Hurricane Impact Door Kit	