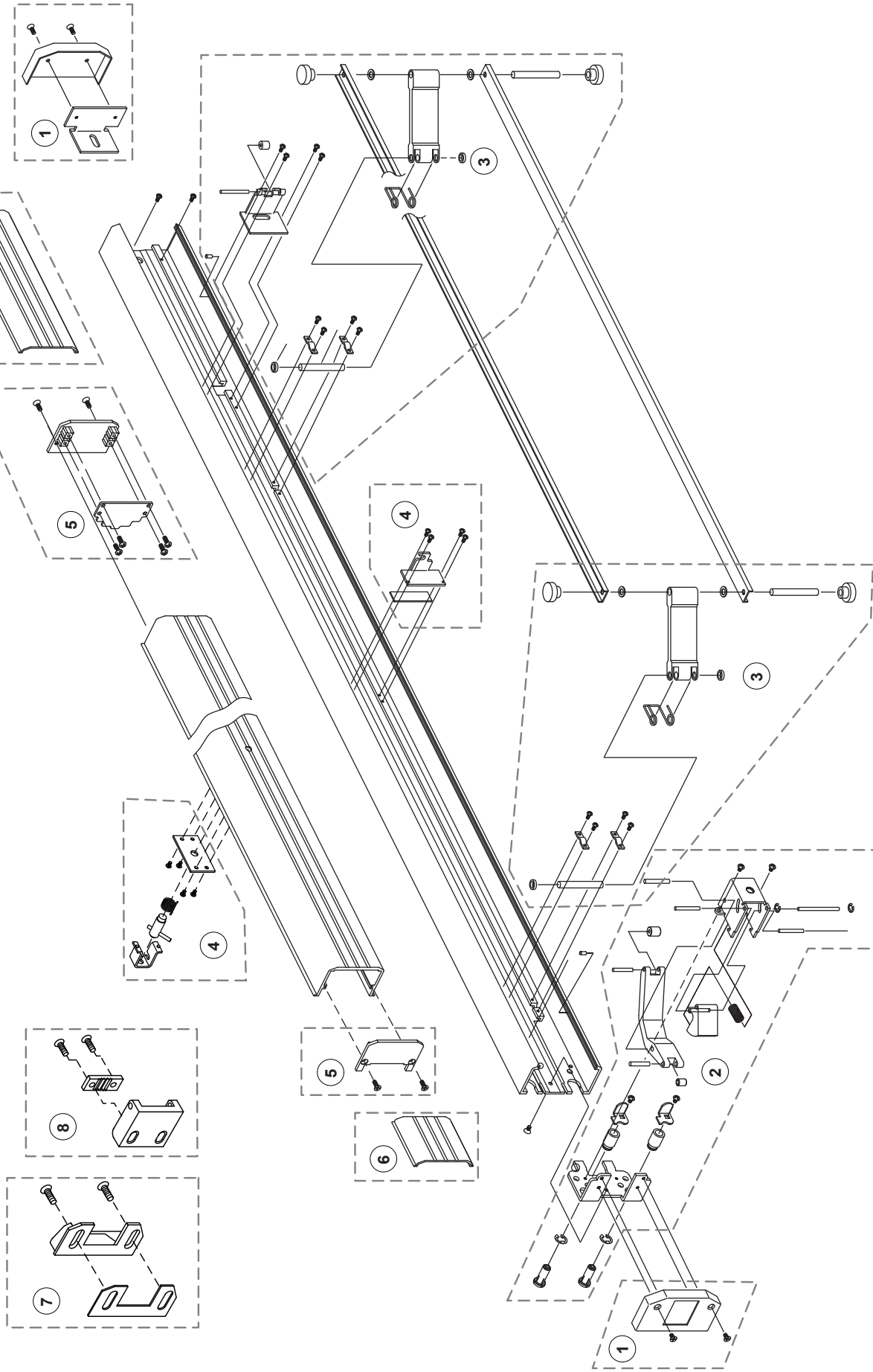


COMPONENT PARTS



COMPONENT PARTS

Assembly No.	Part No.	Description	Specify Finish No.
1	302654	Base End Cap Package	US28/628, DBZ/313
2	302679	Latch Assembly Package	
3	302664	Control Arm Hardware Package	
4	302670	Dogging Assembly	
5	302650	Push Pad End Cap Package	US28/628, DBZ/313
6	302674	Base Cover Plate Package - Ribbed - 3/0 Panic	US28/628, DBZ/313, CHAMP/690
6	30267448	Base Cover Plate Package - Ribbed - 4/0 Panic	US28/628, DBZ/313, CHAMP/690
6	302674S	Base Cover Plate Package - Smooth - 3/0 Panic	US28/628, DBZ/313
7	302436628	"C" Type - Surface Mounted Strike	
8	30250	"S" Type - Surface Mounted Strike	US28/628, BLK/624
Not Shown	302572PKG	Cylinder Dogging Cam Package (6 pkg.)	
Not Shown	302796	Dogging Hex Key Package (2 Pkg.)	