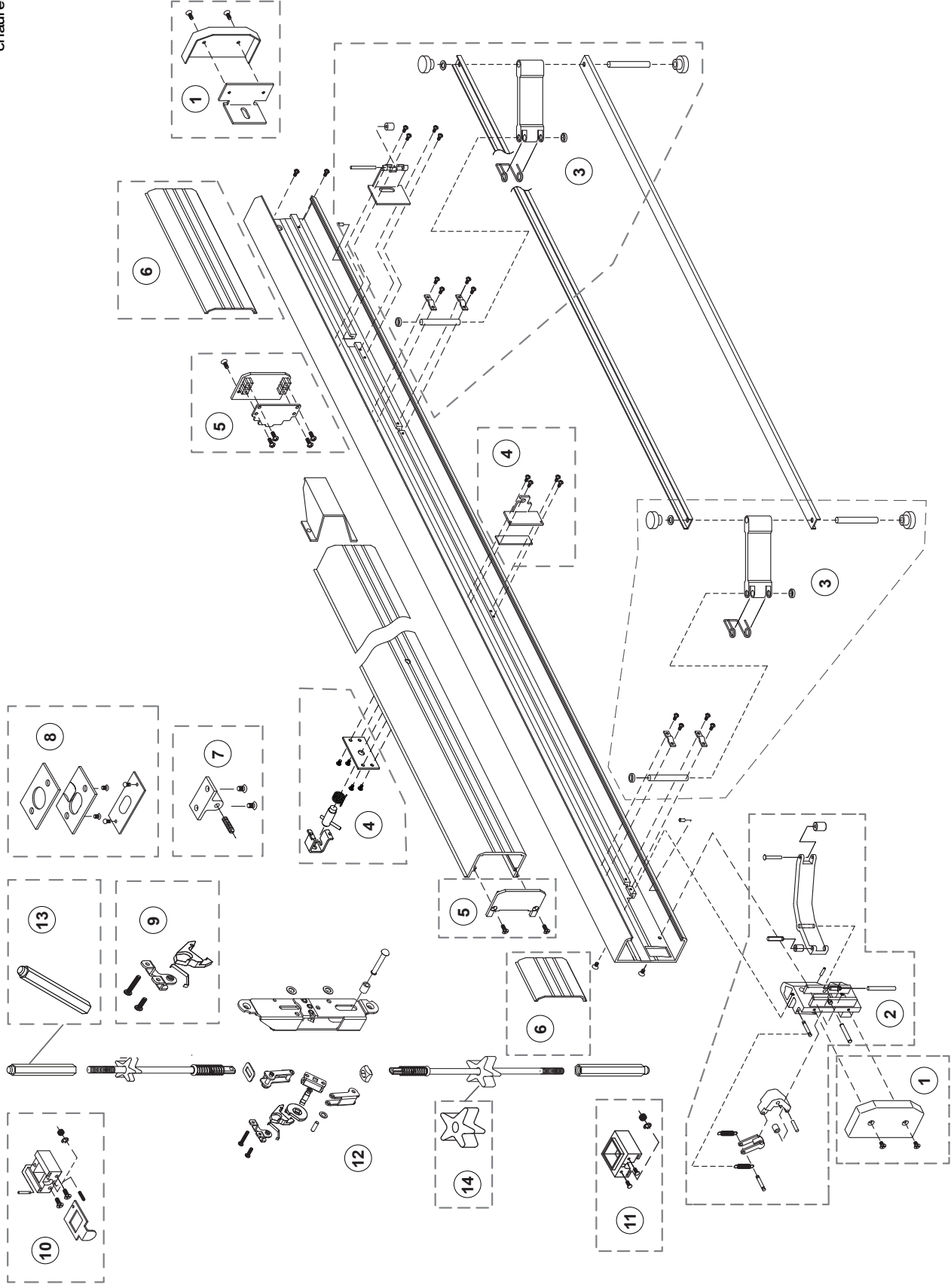


COMPONENT PARTS



COMPONENT PARTS

Assembly No.	Part No.	Description	Specify Finish No.
1	302652	Base End Cap Package	US28/628, DBZ/313
2	302669	LHRB - Actuating Lift Assembly	
Not Shown	302675	RHRB - Actuating Lift Assembly	
3	302664	Control Arm Hardware Package	
4	302670	Dogging Assembly	
5	302650	Push-Pad End Cap Package	US28/628, DBZ/313, CHAMP/690
6	302674	Base Cover Plate Package - Ribbed - 3/0 Panic	US28/628, DBZ/313, CHAMP/690
6	30267448	Base Cover Plate Package - Ribbed - 4/0 Panic	US28/628, DBZ/313, CHAMP/690
6	302674S	Base Cover Plate Package - Smooth - 3/0 Panic	US28/628, DBZ/313
7	30824	Trip Bracket Package	US28/628, DBZ/313, BLK/624
8	301084	Strike Package - Top and Bottom	US28/628, DBZ/313, BLK/624
9	30916	Rod and Case Hardware Package	
10	30934	Top Bolt Guide Assembly	US28/628, DBZ/313, BLK/624
11	30320	Bottom Bolt Guide Assembly	US28/628, DBZ/313, BLK/624
12	302452J	Standard Rod and Case Assembly - 7/0	
13	30763P	Standard Top or Bottom Bolt	
14	301552PKG	Rod Silencers (12 pkg.)	
Not Shown	30PBAW	Bolt Adjustment Wrench	
Not Shown	302572PKG	Cylinder Dogging Cam Package (6 Pkg.)	
Not Shown	302796	Dogging Hex Key Package (2 Pkg.)	
Not Shown	302513	Base 1085 Retrofit Finish Kit	US28/628, DBZ/313
Not Shown	301347	Top Rod Extension - 12"	
Not Shown	301348	Top Rod Extension - 24"	