

I HEADER PREPARATION

- A. DIM A MUST BE MAINTAINED FROM JAMB TO CENTER LINE OF SPINDLE.
- B. "F" MUST BE MAINTAINED FROM PIVOT SIDE OF HEADER TO Q OF SPINDLE REGARDLESS OF HEADER WIDTH
- C. FOR MORE DETAILS REFER TO TEMPLATE# 10-137

II DOOR PREPARATION (BUTT HINGE)

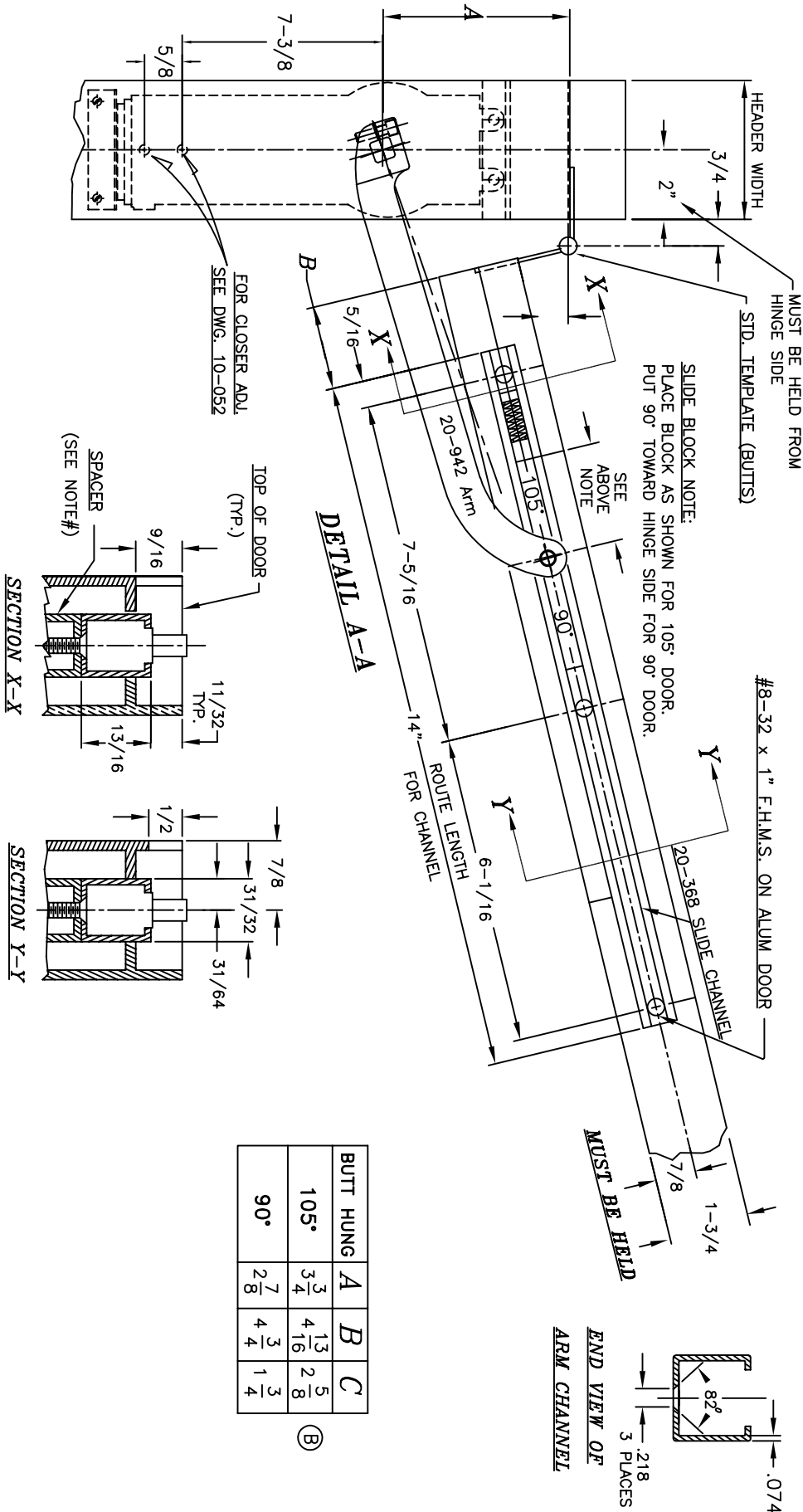
- A. ROUTE TOP OF DOOR FOR SLIDE CHANNEL INSTALLATION. (DETAIL A-A), ON ALUM DOORS, SPACERS MAY BE NEEDED TO MAINTAIN REQ. 11/32" DIM. SEE X-X
- B. ROUTING IS NEEDED ON STOP SIDE OF DOOR FOR ARM CLEARANCE. SEE B-B
- C. PREPARE DOOR FOR BUTTS AS NORMAL

III DOOR INSTALLATION

- A. SET ON PIVOTS, ADJUST FOR CLEARANCES.

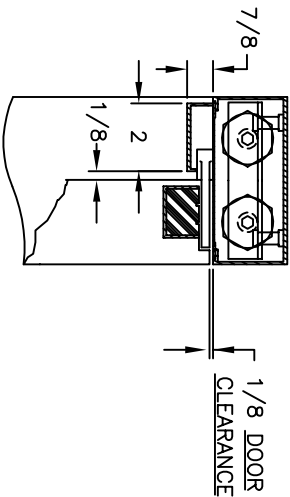
IV COMPLETE INSTALLATION

- A. MOUNT ARM ON SPINDLE AND SECURE WITH 1/4-20 x 7/8" SOC. HD. CAP SCREW PROVIDED.
- B. OPEN DOOR AND ACTUATE ARM INTO OPEN POS., SLIP ARM OVER SLIDE PIN AND SECURE WITH PIN RETAINER.
- C. ADJUST CLOSER TO DESIRED DOOR SPEED. INSTALL ARM COVER WITH SCREWS PROVIDED.

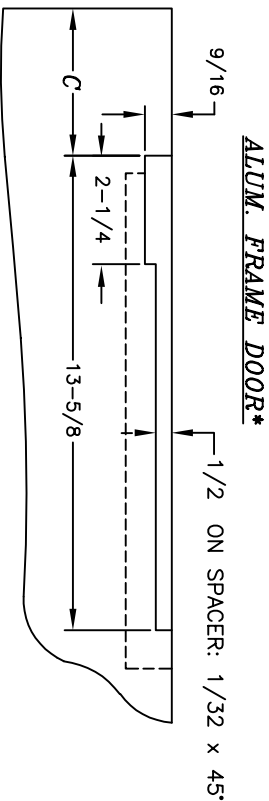


BUTT HUNG	A	B	C
105°	3/4	4 13/16	2 5/8
90°	2 7/8	4 3/4	1 3/4

(B)

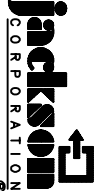


END VIEW - DOOR CLOSED



DETAIL B-B

JED-201-S TYPE SERIES
BUTT HINGES

FILE NO. 10-948	B	01/27/00	1-13/16	WAS 3-7/8	ECN1337	RM
NEXT ASSY 21-201-KITS	DIMENSIONAL TOLERANCES UNLESS OTHERWISE SPECIFIED					
QTY. USED 1	DECIMAL DIMENSIONS .XX ± .010					
	DECIMAL DIMENSIONS .XXX ± .005					
	ANGULAR ± ° FRACTIONAL ± 1/64					
	MATERIAL	APPROVALS	DATE	 JACKSON CORPORATION 3447 UNION PACIFIC AVE., LOS ANGELES, CALIF. 90023		
	FINISH	CHECKED				
	HEAT TREAT	DRAWN	RM 6/7/97			
		SCALE	NONE			
		-INSTALLATION GUIDE-			SHEET 1 OF 1 SHEETS	
		PKG ON ALUM HEADER WITH			DWG. NO.	
		ALUM DOOR ON BUTT HINGE			10-948	B