

I HEADER PREPARATION

- A. DIM A MUST BE MAINTAINED FROM JAMB TO CENTER LINE OF SPINDLE.
- B. Y¹ MUST BE MAINTAINED FROM PIVOT SIDE OF HEADER TO $\frac{1}{2}$ OF SPINDLE REGARDLESS OF HEADER WIDTH
- C. FOR MORE DETAILS REFER TO TEMPLATE# 10-1184 (FOR SPACER BRACKET)

II DOOR PREPARATION

(BUTT HINGE)

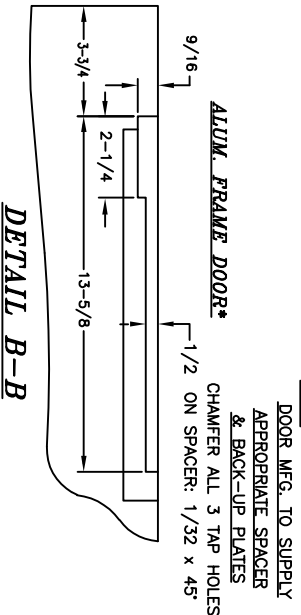
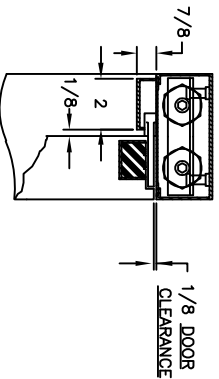
- A. ROUTE TOP OF DOOR FOR SLIDE CHANNEL INSTALLATION. (DETAIL A-A). ON ALUM DOORS, SPACERS MAY BE NEEDED TO MAINTAIN REQ. 11/32" DIM. SEE X-X
- B. ROUTING IS NEEDED ON STOP SIDE OF DOOR FOR ARM CLEARANCE. SEE B-B
- C. PREPARE DOOR FOR BUTTS AS NORMAL

III DOOR INSTALLATION

- A. SET ON PIVOTS, ADJUST FOR CLEARANCES.

IV COMPLETE INSTALLATION

- A. MOUNT ARM ON SPINDLE AND SECURE WITH 1/4-20 x 7/8" SOC. HD. CAP SCREW PROVIDED.
- B. OPEN DOOR AND ACTUATE ARM INTO OPEN POS. SLIP ARM OVER SLIDE PIN AND SECURE WITH PIN RETAINER.
- C. ADJUST CLOSER TO DESIRED DOOR SPEED. INSTALL ARM COVER WITH SCREWS PROVIDED.



JED-201-S TYPE SERIES BUTT HINGES

TRUE 90 DEG. POS. WITH 105 DEG. CLOSER

B	8 9 07	3-3/4 WAS "C"	ECN1970	JB
DIMENSIONS TO FINISHES				
UNLESS OTHERWISE SPECIFIED				
DECIMAL DIMENSIONS .XX	± .010	APPROVED	DATE	
DECIMAL DIMENSIONS .XXX	± .005	CHECKED		
ANGULAR ± °	FRACTIONAL ± 1/64	DRAWN	RM	8.8.07
MATERIAL	SCALE	NONE		
FILE NO.	10-1063			
NEXT ASSY.	21-201-KITS			
QTY. USED	1			
FINISH				
HEAT TREAT				
-INSTALLATION GUIDE-				
20-330 CLOSER WITH 20-3072				
PKG ON ALUM HEADER WITH				
ALUM DOOR ON BUTT HINGE				
10-1063 B				
SHEET 1 OF 1 SHEETS				
DWG. NO.				
REV.				
3447 UNION PACIFIC AVE.				
LOS ANGELES, CALIF. 90033				
JACKSON CORPORATION				