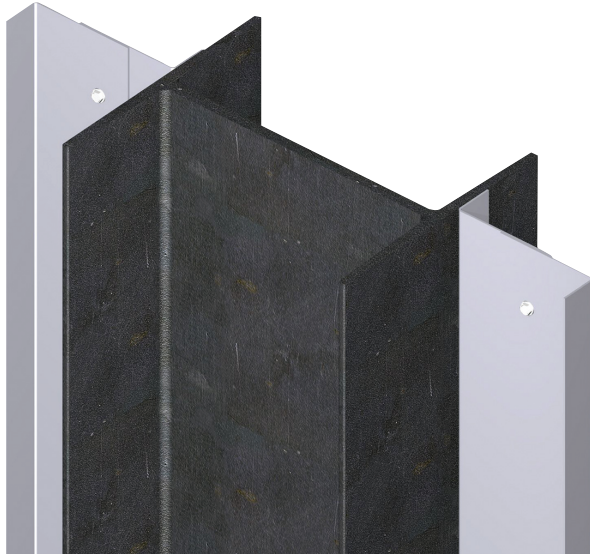


## Basic Installation Instructions

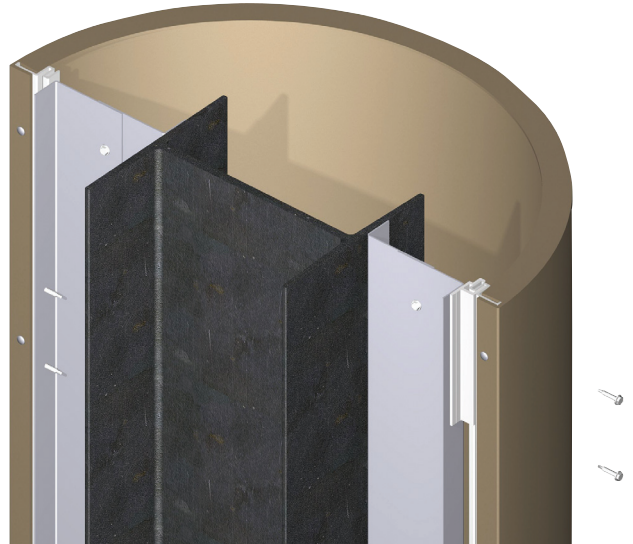
### 1. Column Clip Installation

First, locate the center of the Column to be covered. Then install Attaching Clips as required, confirming that the column is plumb prior to fastening. If the column is not plumb, use Shims or Setting Blocks to plumb behind the Attaching Clips (see pages M287-M289).



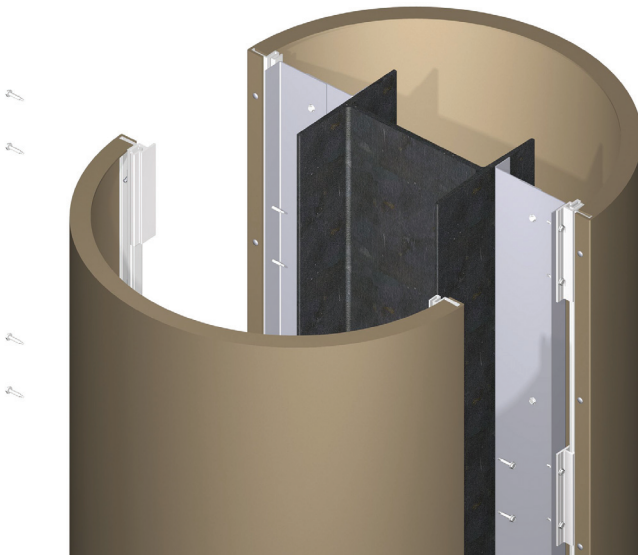
### 2. Plumb Column Cover

Dry fit the first half of the Column Cover to make sure that it is level and plumb. Confirm top and bottom gap required per specifications, then secure Column Cover to Attaching Clips using Self-Drilling Screws (see page M291).



### 3. Column Cover Joint Spacing

Now locate and dry fit the second half of the Column Cover and confirm the joint spacing per specifications. Use spacers to keep the joint spacing consistent prior to anchoring. Now secure the second half of the Column Cover to the Attaching Clips using Self-Drilling Screws (see page M291).



### 4. Caulk Joints

After the Column Covers have been mechanically fastened to the Attaching Clips, silicone all the exposed joints. First use Backer Rod in the joints (see page M286), prior to using Cat. No. 95C Silicone (see page M284). **Note:** To achieve an "hour glass" type caulking bead, we recommend tooling the silicone with CRL Joint Tooling Spatulas (see page M285).

