

① DIM. WILL REMAIN AT 2" REGARDLESS OF HEADER WIDTH AND MUST BE HELD FROM PIVOT SIDE.
 ② RECOMMENDED DEPTH FOR TOP RAIL IS 7/8

FILE NO.	10-1078	APPROVALS	DATE
NEXT ASSY.	FINISH	APPROVED	
QTY. USED	1	CHECKED	RM 12.16.02
	HEAT TREAT	DRAWN	
		MATERIAL	NONE
		SCALE	NONE

DIMENSIONAL TOLERANCES UNLESS OTHERWISE SPECIFIED
 DECIMAL DIMENSIONS .XX ± .010
 DECIMAL DIMENSIONS .XXX ± .005
 ANGULAR ± X ° FRACTIONAL ± 1/64

APPROVALS

DATE

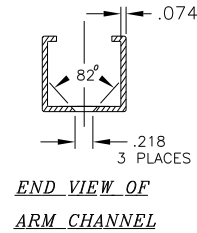
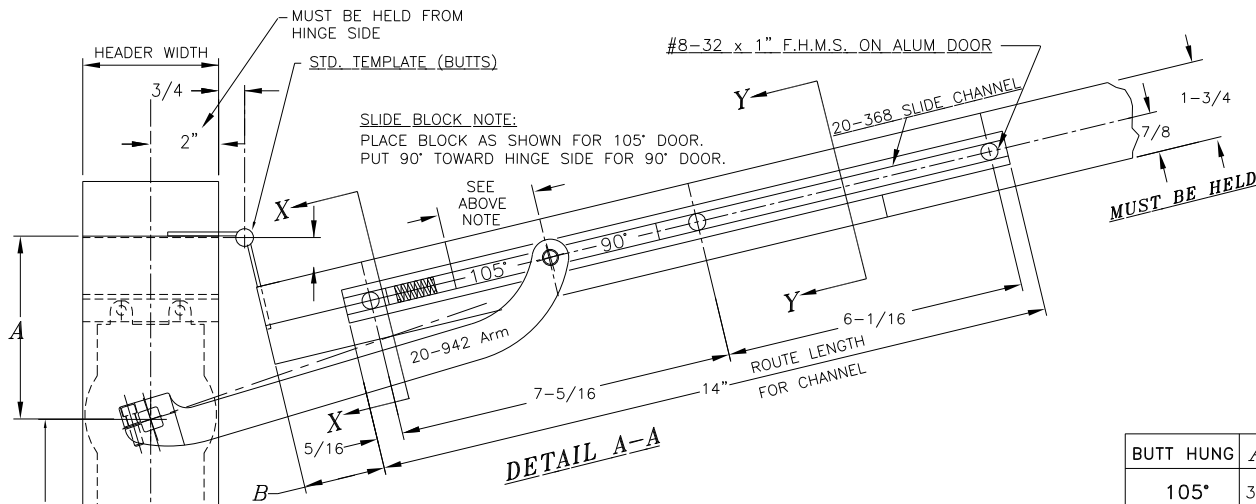
SCALE NONE

METHOD OF MFG. ARM CHANNEL ON DOOR WITH OFFSET ARM DOOR FLUSH

3447 UNION PACIFIC AVE. LOS ANGELES, CALIF. 90023

10-1078 A





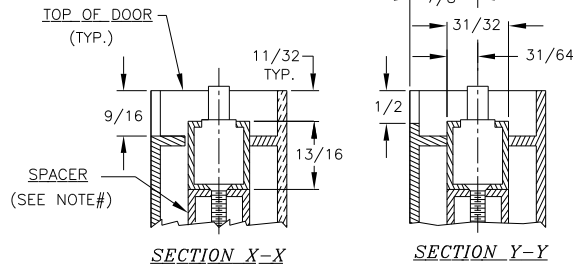
I HEADER PREPARATION

- A. DIM A MUST BE MAINTAINED FROM JAMB TO CENTER LINE OF SPINDLE.
- B. 'F' MUST BE MAINTAINED FROM PIVOT SIDE OF HEADER TO C OF SPINDLE REGARDLESS OF HEADER WIDTH
- C. FOR MORE DETAILS REFER TO TEMPLATE# 10-137

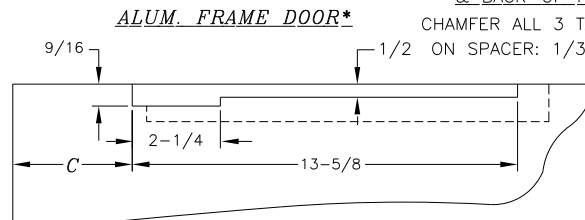
II DOOR PREPARATION (BUTT HINGE)

- A. ROUTE TOP OF DOOR FOR SLIDE CHANNEL INSTALLATION. (DETAIL A-A). ON ALUM DOORS, SPACERS MAY BE NEEDED TO MAINTAIN REQ. 11/32" DIM. SEE X-X
- B. ROUTING IS NEEDED ON STOP SIDE OF DOOR FOR ARM CLEARANCE. SEE B-B
- C. PREPARE DOOR FOR BUTTS AS NORMAL

BUTT HUNG	A	B	C
105°	3/4	4 13/16	2 5/8
90°	2 7/8	4 3/4	1 3/4



NOTE:
DOOR MFG. TO SUPPLY
APPROPRIATE SPACER
& BACK-UP PLATES
CHAMFER ALL 3 TAP HOLES
ON SPACER: 1/32 x 45°



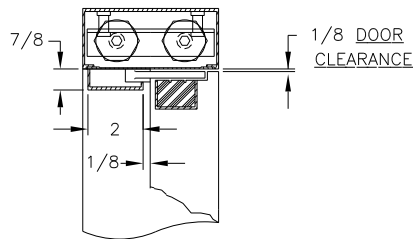
DETAIL B-B

III DOOR INSTALLATION

- A. SET ON PIVOTS, ADJUST FOR CLEARANCES.


IV COMPLETE INSTALLATION

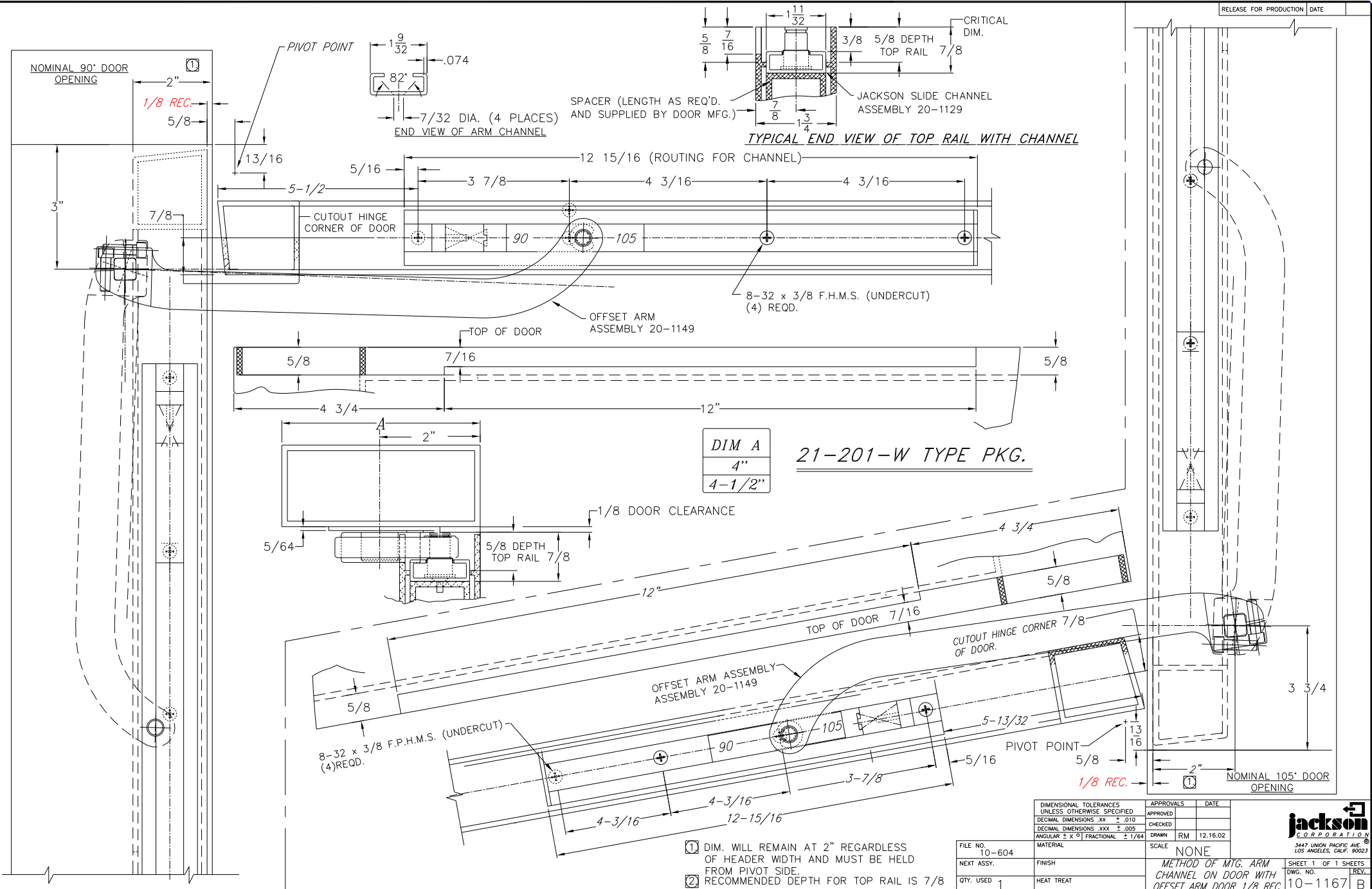
- A. MOUNT ARM ON SPINDLE AND SECURE WITH 1/4-20 x 7/8" SOC. HD. CAP SCREW PROVIDED.
- B. OPEN DOOR AND ACTUATE ARM INTO OPEN POS., SLIP ARM OVER SLIDE PIN AND SECURE WITH PIN RETAINER.
- C. ADJUST CLOSER TO DESIRED DOOR SPEED. INSTALL ARM COVER WITH SCREWS PROVIDED.



END VIEW - DOOR CLOSED

JED-201-U TYPE SERIES BUTT HINGES

DIMENSIONAL TOLERANCES UNLESS OTHERWISE SPECIFIED DECIMAL DIMENSIONS .XX ± .010 DECIMAL DIMENSIONS .XXX ± .005 ANGULAR ± ° FRACTIONAL ± 1/64	APPROVALS	DATE	 3447 UNION PACIFIC AVE. LOS ANGELES, CALIF. 90023
	APPROVED		
	CHECKED		
	DRAWN	RM	5.9.04
FILE NO. 10-1161	MATERIAL	SCALE	NONE
NEXT ASSY: 21-201-U-KITS	FINISH	-INSTALLATION GUIDE-	
QTY. USED 1	HEAT TREAT	20-330 CLOSER WITH 20-3072 PKG ON ALUM HEADER WITH ALUM DOOR ON BUTT HINGE	
		SHEET 1 OF 1 SHEETS	REV.
		DWG. NO.	10-1161



DIM A
4"
4-1/2"

21-201-W TYPE PKG.

- ① DIM. WILL REMAIN AT 2" REGARDLESS OF HEADER WIDTH AND MUST BE HELD FROM PIVOT SIDE.
- ② RECOMMENDED DEPTH FOR TOP RAIL IS 7/8

DIMENSIONAL TOLERANCES UNLESS OTHERWISE SPECIFIED	
DECIMAL DIMENSIONS .XX	± .010
DECIMAL DIMENSIONS .XXX	± .005
ANGULAR ± X ° FRACTIONAL ± 1/64	
MATERIAL	
FINISH	
HEAT TREAT	

APPROVALS	DATE
APPROVED	
CHECKED	
DRAWN RM	12.16.02
SCALE	NONE

FILE NO.	10-604
NEXT ASSY.	
QTY. USED	1

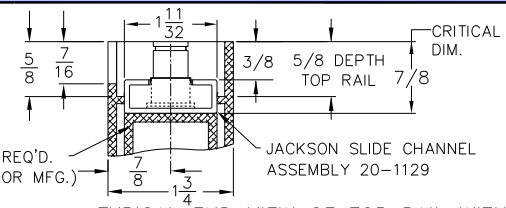
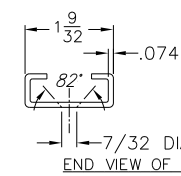
Method of Mtg. Arm Channel on Door with Offset Arm Door 1/8 Rec.

SHEET 1 OF 1 SHEETS
 DWG. NO. 10-1167
 REV. B

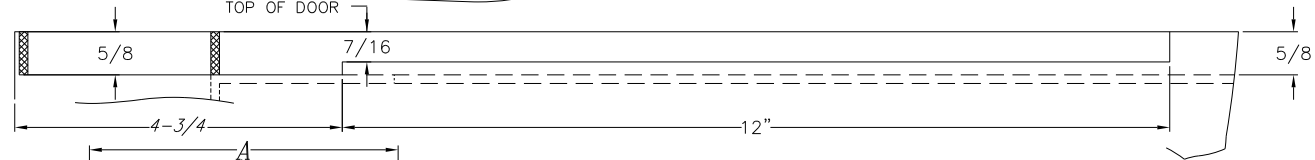
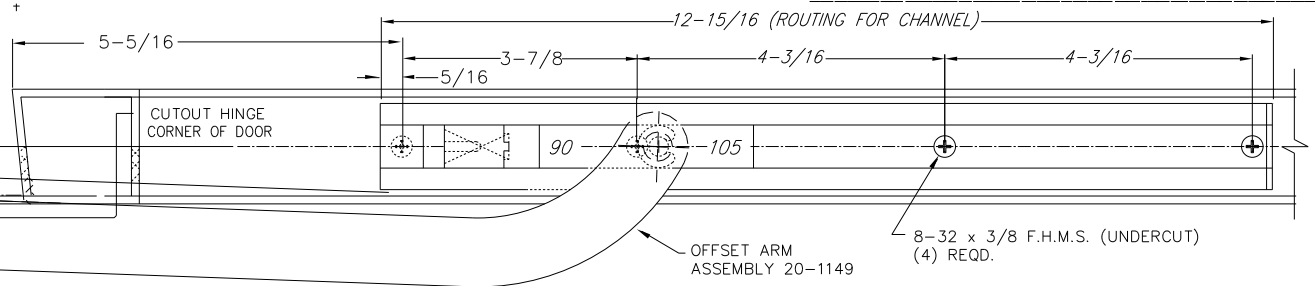
JACKSON CORPORATION
 3447 UNION PACIFIC AVE.
 LOS ANGELES, CALIF. 90023

NOMINAL 90° DOOR
OPENING

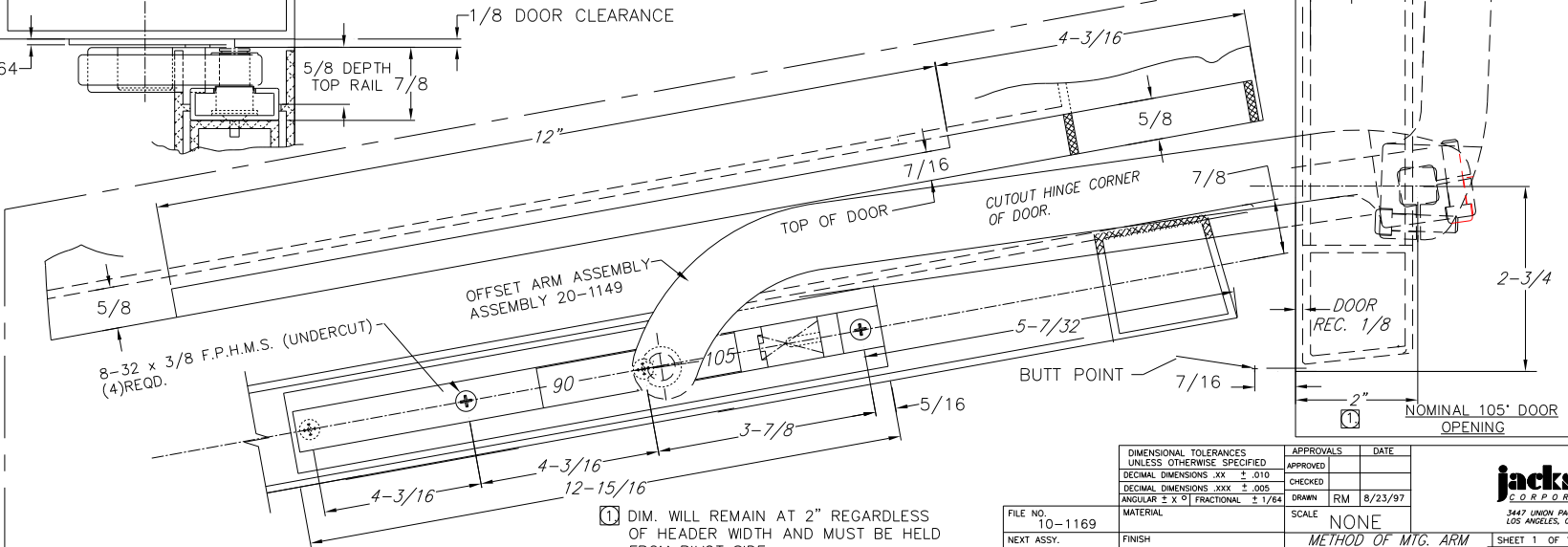
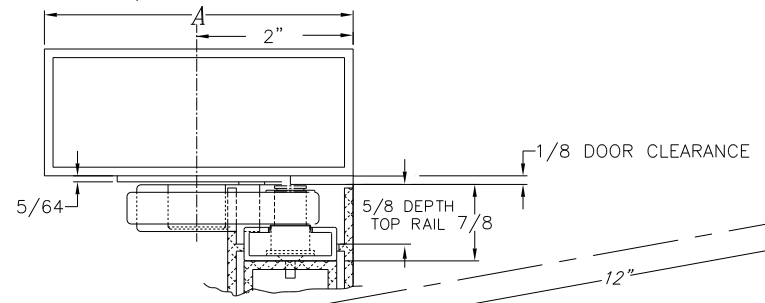
2"
1/8 REC.
7/16



SPACER (LENGTH AS REQ'D. AND SUPPLIED BY DOOR MFG.)



21-201-W TYPE PKG.



- ① DIM. WILL REMAIN AT 2" REGARDLESS OF HEADER WIDTH AND MUST BE HELD FROM PIVOT SIDE.
- ② RECOMMENDED DEPTH FOR TOP RAIL IS 7/8

DIMENSIONAL TOLERANCES UNLESS OTHERWISE SPECIFIED	APPROVALS	DATE
DECIMAL DIMENSIONS .XX ± .010	APPROVED	
DECIMAL DIMENSIONS .XXX ± .005	CHECKED	
ANGULAR ± X ° FRACTIONAL ± 1/64	RM	8/23/97

FILE NO.	10-1169
NEXT ASSY.	FINISH
QTY. USED	1
	HEAT TREAT

SCALE NONE

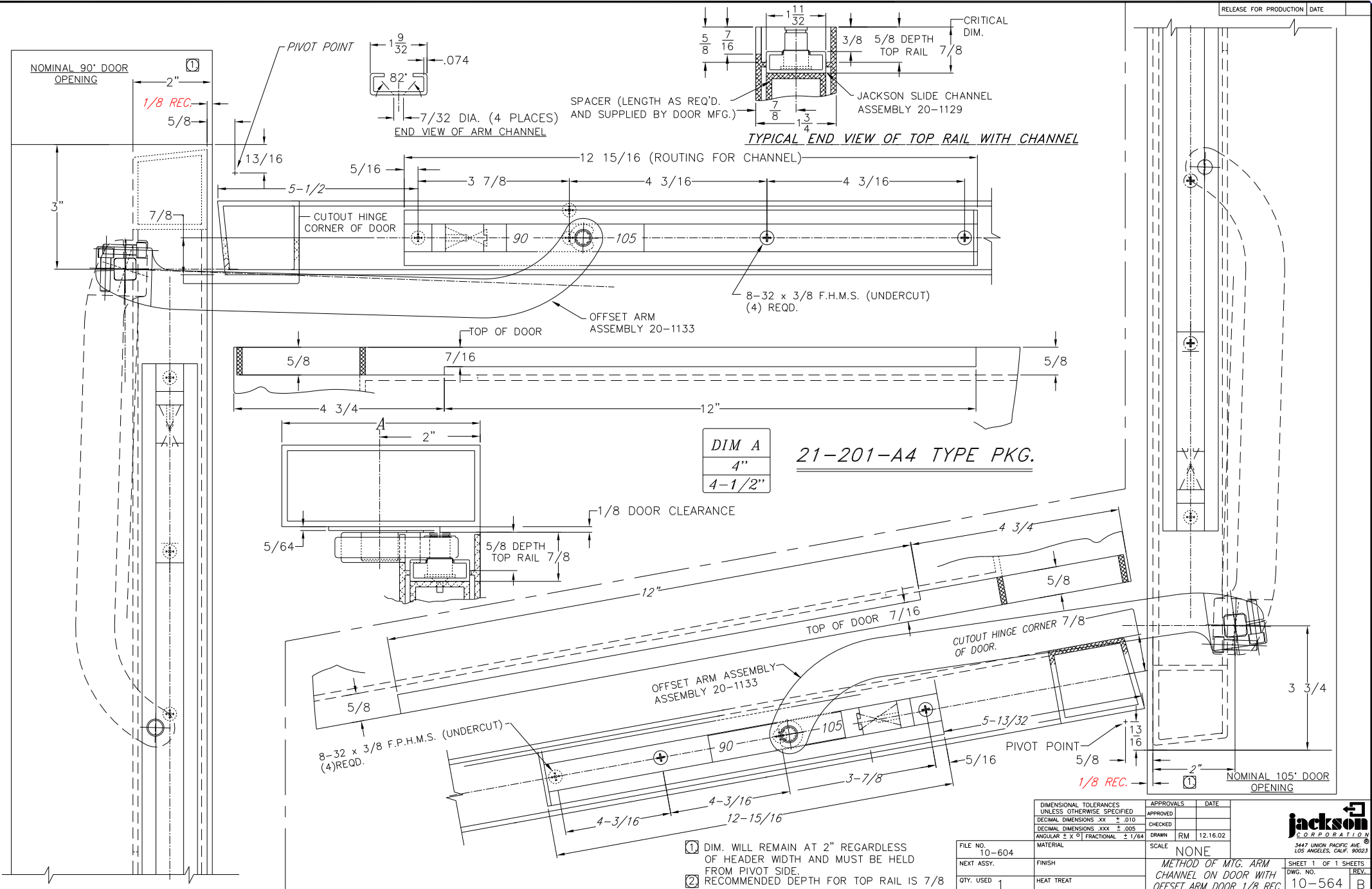
METHOD OF MFG. ARM CHANNEL ON DOOR WITH OFFSET ARM DOOR REC. 1/8"

SHEET 1 OF 1 SHEETS

DWG. NO. 10-1169

REV. B





DIM A
4"
4-1/2"

21-201-A4 TYPE PKG.

- ① DIM. WILL REMAIN AT 2" REGARDLESS OF HEADER WIDTH AND MUST BE HELD FROM PIVOT SIDE.
- ② RECOMMENDED DEPTH FOR TOP RAIL IS 7/8

DIMENSIONAL TOLERANCES UNLESS OTHERWISE SPECIFIED	
DECIMAL DIMENSIONS .XX	± .010
DECIMAL DIMENSIONS .XXX	± .005
ANGULAR ± X ° FRACTIONAL	± 1/64

APPROVALS	DATE
APPROVED	
CHECKED	
DRAWN	RM 12.16.02

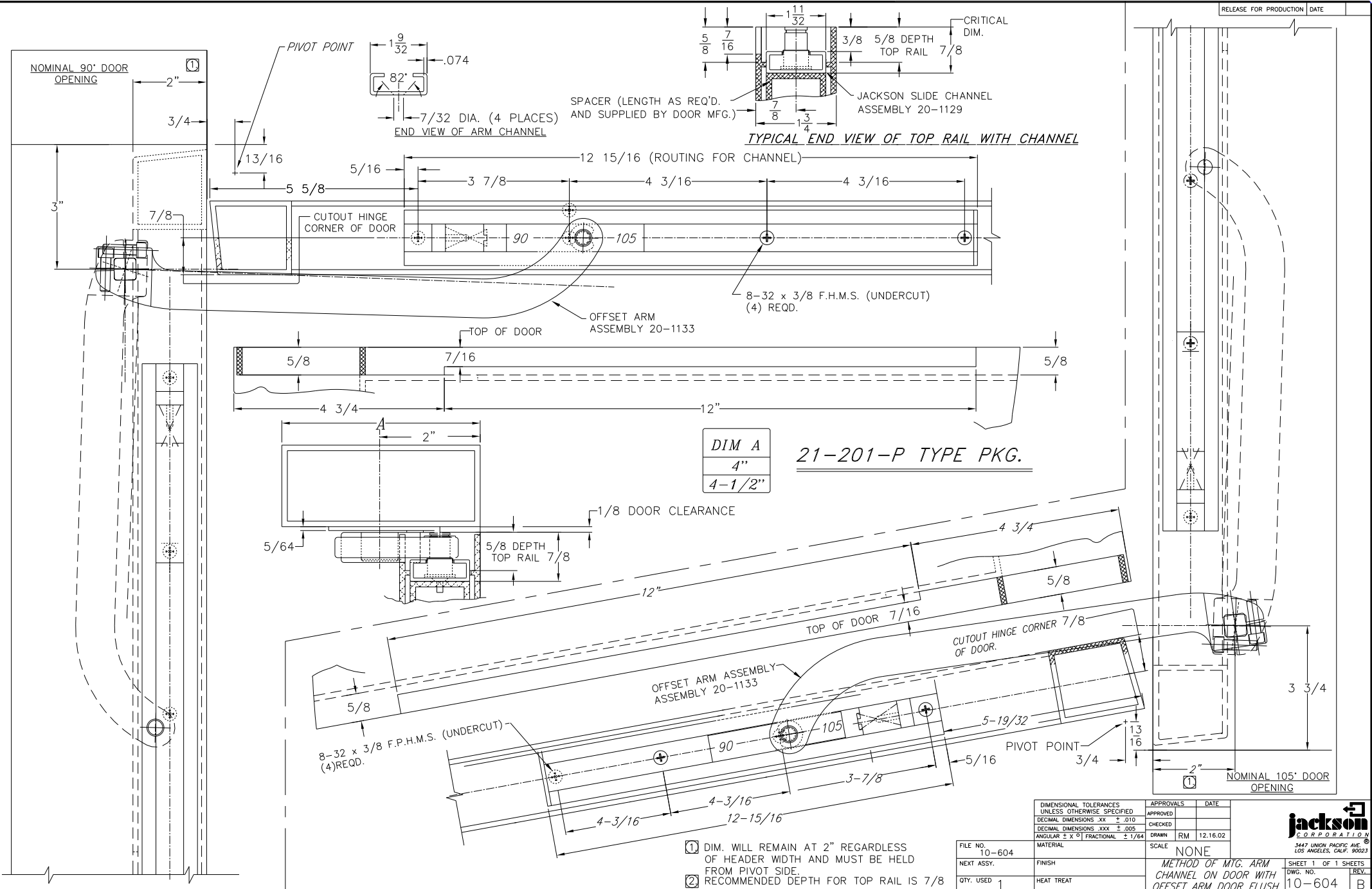
FILE NO.	10-604
NEXT ASSY.	FINISH
QTY. USED	1
	HEAT TREAT

SCALE: NONE

METHOD OF MFG. ARM CHANNEL ON DOOR WITH OFFSET ARM DOOR 1/8 REC.

SHEET 1 OF 1 SHEETS
DWG. NO. 10-564
REV. B





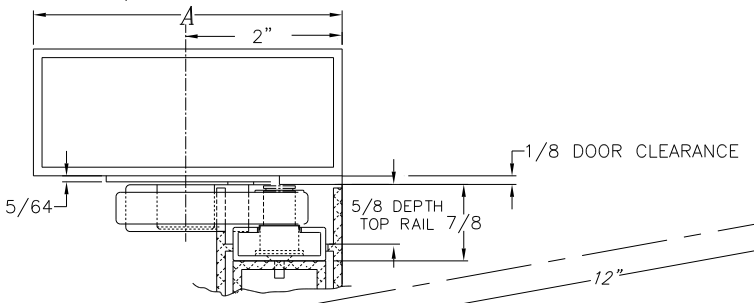
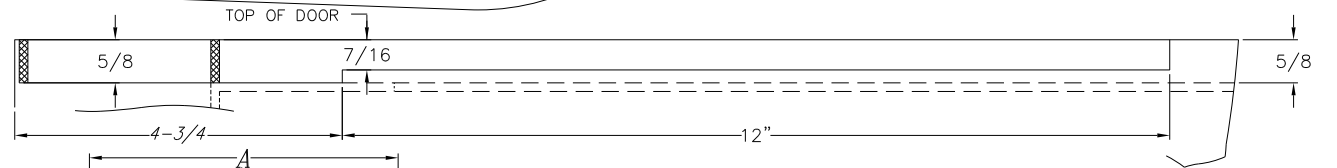
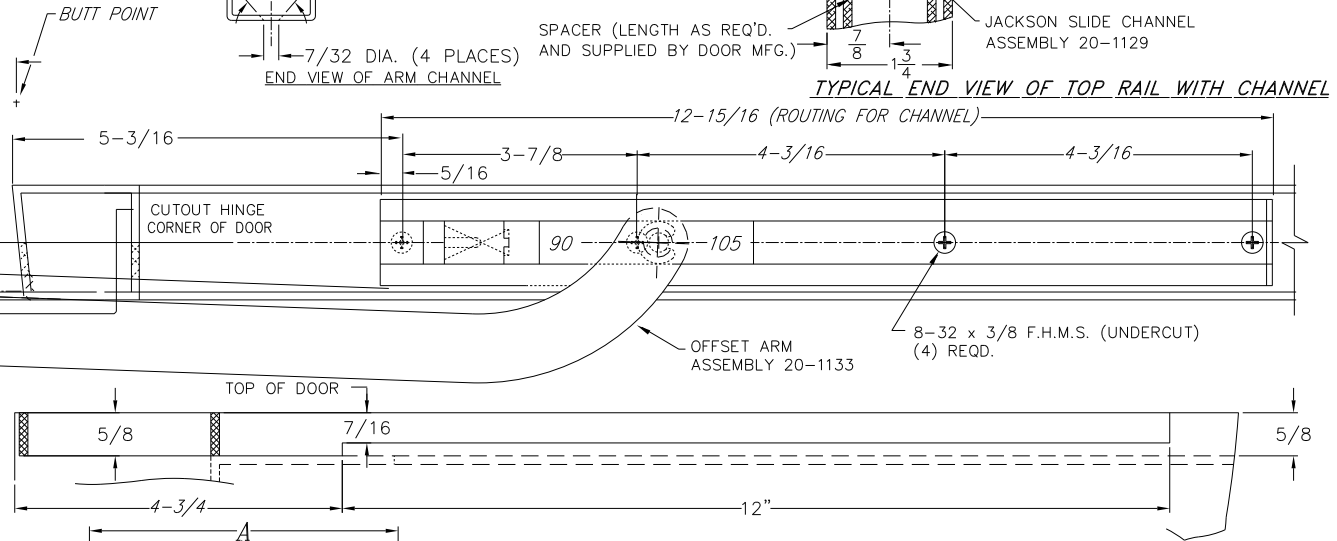
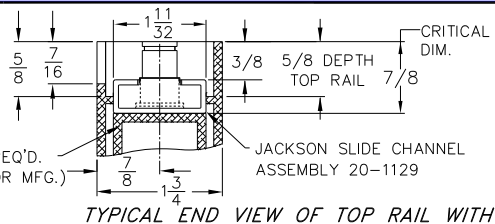
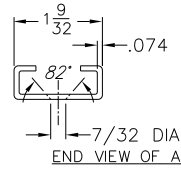
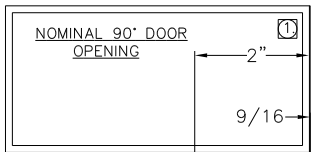
① DIM. WILL REMAIN AT 2" REGARDLESS OF HEADER WIDTH AND MUST BE HELD FROM PIVOT SIDE.
 ② RECOMMENDED DEPTH FOR TOP RAIL IS 7/8

DIMENSIONAL TOLERANCES UNLESS OTHERWISE SPECIFIED	APPROVALS	DATE
DECIMAL DIMENSIONS .XX ± .010	APPROVED	
DECIMAL DIMENSIONS .XXX ± .005	CHECKED	
ANGULAR ± X ° FRACTIONAL ± 1/64	DRAWN	RM 12.16.02

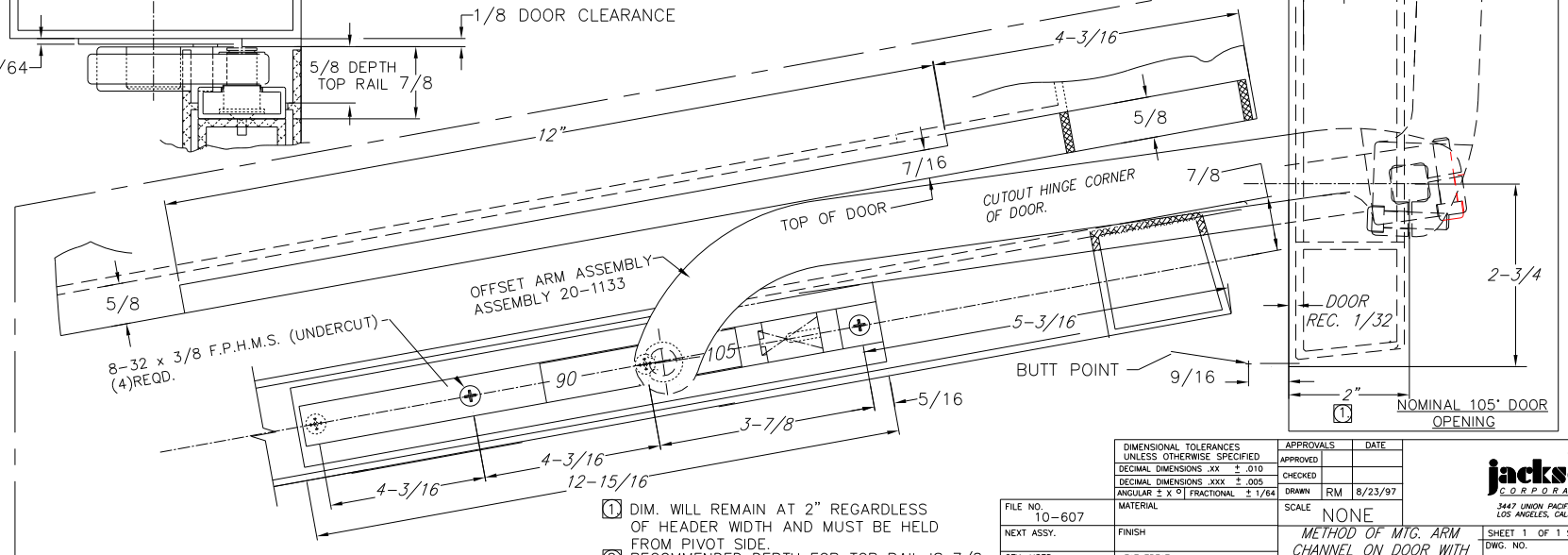
FILE NO. 10-604	MATERIAL	SCALE NONE
NEXT ASSY.	FINISH	
QTY. USED 1	HEAT TREAT	

METHOD OF MFG. ARM CHANNEL ON DOOR WITH OFFSET ARM DOOR FLUSH	
SHEET 1 OF 1 SHEETS	REV.
DWG. NO. 10-604	B





21-201-P TYPE PKG.



- ① DIM. WILL REMAIN AT 2" REGARDLESS OF HEADER WIDTH AND MUST BE HELD FROM PIVOT SIDE.
- ② RECOMMENDED DEPTH FOR TOP RAIL IS 7/8

DIMENSIONAL TOLERANCES UNLESS OTHERWISE SPECIFIED	
DECIMAL DIMENSIONS .XX	± .010
DECIMAL DIMENSIONS .XXX	± .005
ANGULAR ± X °	FRACTIONAL ± 1/64

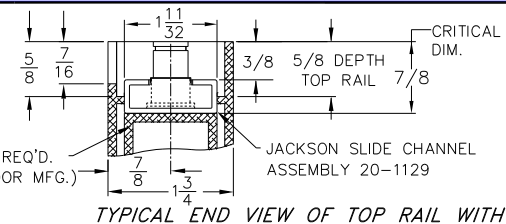
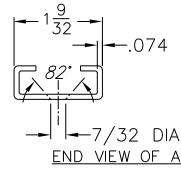
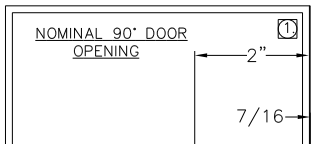
APPROVALS	DATE
APPROVED	
CHECKED	8/23/97
DRAWN	RM
SCALE	NONE

FILE NO.	10-607
NEXT ASSY.	FINISH
QTY. USED	1
	HEAT TREAT

METHOD OF MFG. ARM CHANNEL ON DOOR WITH OFFSET ARM DOOR REC. 3/32"

jackson CORPORATION
3447 UNION PACIFIC AVE.
LOS ANGELES, CALIF. 90023

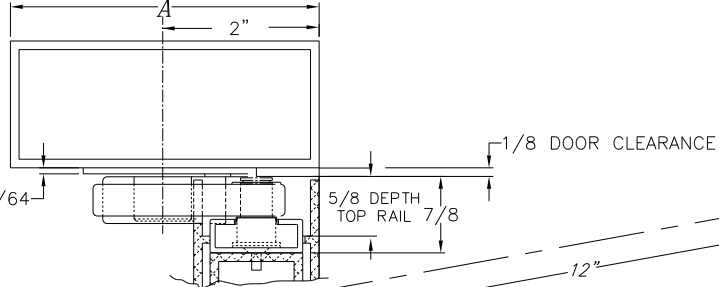
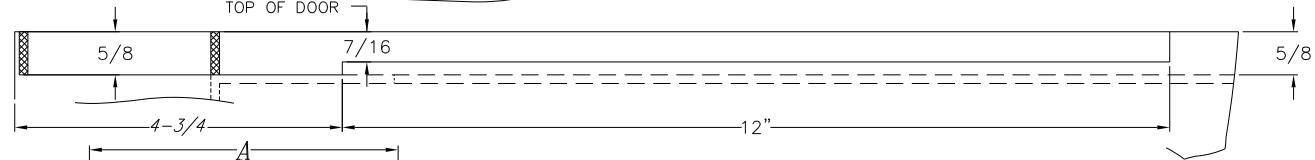
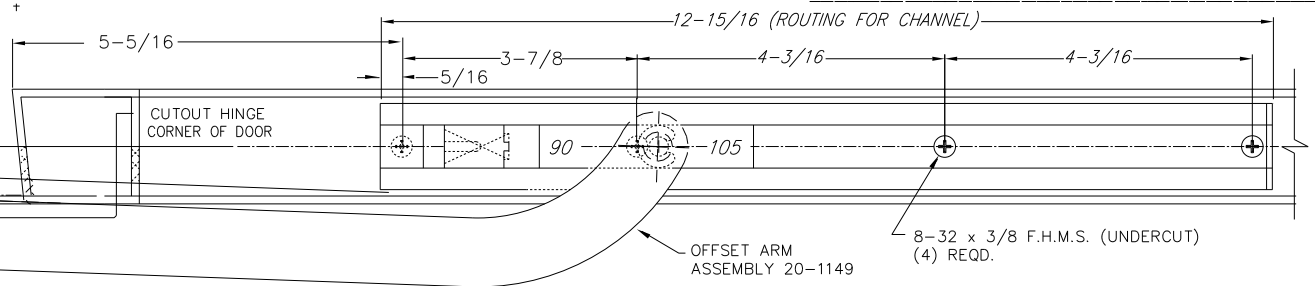
SHEET 1 OF 1 SHEETS
DWG. NO. 10-607
REV. B



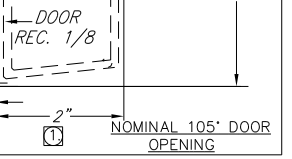
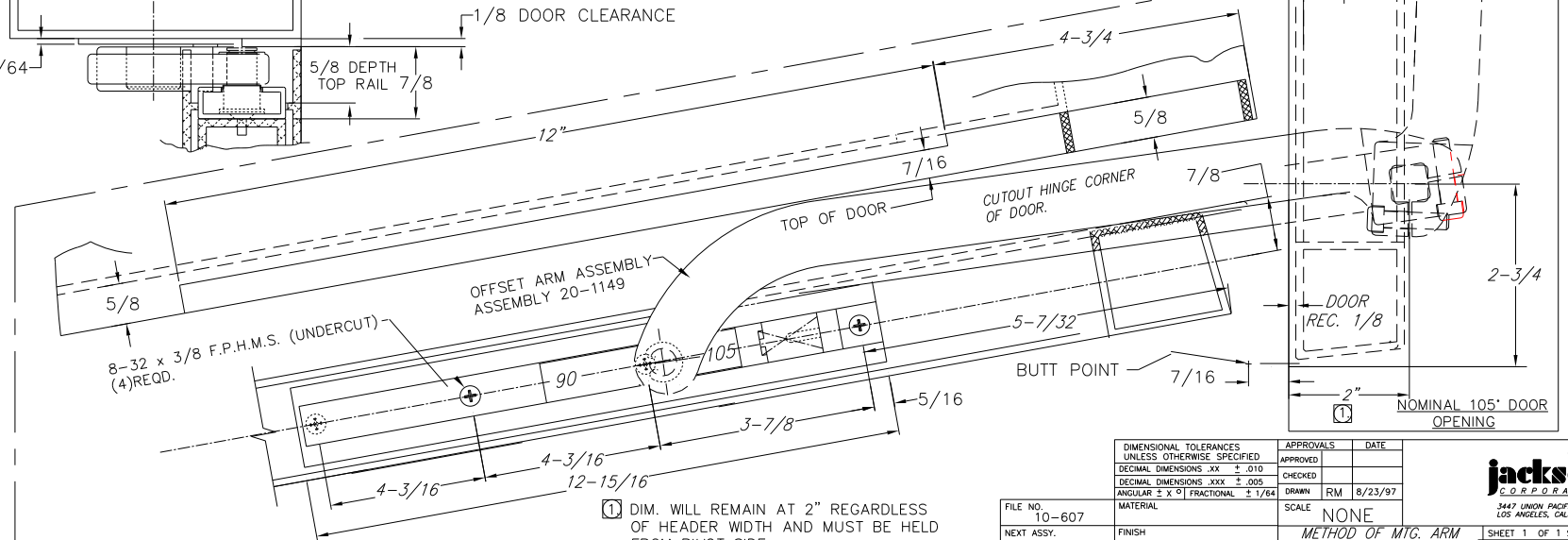
SPACER (LENGTH AS REQ'D. AND SUPPLIED BY DOOR MFG.)

TYPICAL END VIEW OF TOP RAIL WITH CHANNEL

2-3/4"



21-201-A4 TYPE PKG.



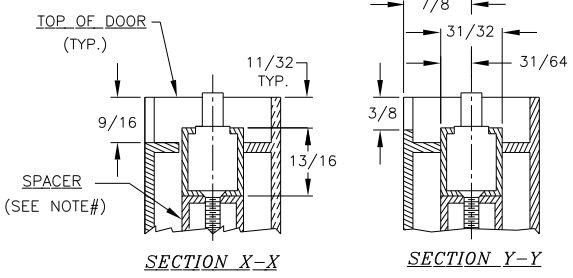
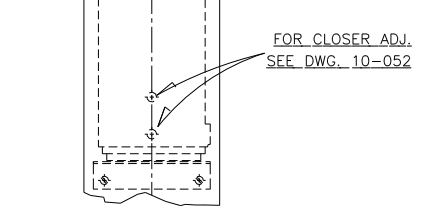
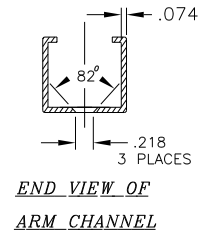
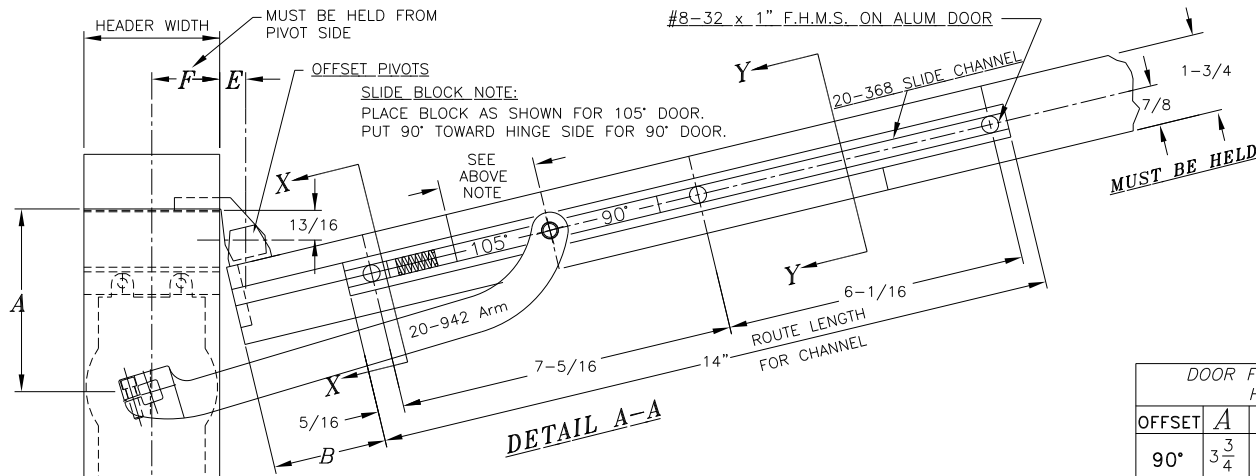
- ① DIM. WILL REMAIN AT 2" REGARDLESS OF HEADER WIDTH AND MUST BE HELD FROM PIVOT SIDE.
- ② RECOMMENDED DEPTH FOR TOP RAIL IS 7/8

DIMENSIONAL TOLERANCES UNLESS OTHERWISE SPECIFIED	APPROVALS	DATE
DECIMAL DIMENSIONS .XX ± .010	APPROVED	
DECIMAL DIMENSIONS .XXX ± .005	CHECKED	
ANGULAR ± X ° FRACTIONAL ± 1/64	RM	8/23/97

FILE NO. 10-607	MATERIAL
NEXT ASSY.	FINISH
QTY. USED 1	HEAT TREAT

SCALE NONE
METHOD OF MFG. ARM CHANNEL ON DOOR WITH OFFSET ARM DOOR REC. 1/8"

jackson CORPORATION
3447 LINCOLN PACIFIC AVE.
LOS ANGELES, CALIF. 90023
SHEET 1 OF 1 SHEETS
DWG. NO. 10-632
REV. B



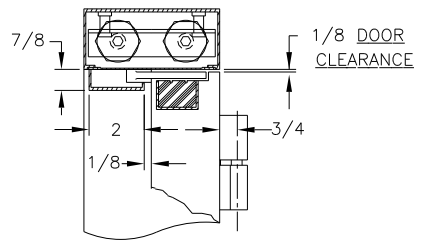
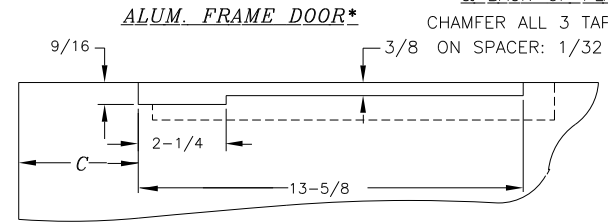
DOOR FLUSH WITH FRAME HEADERS 4"

OFFSET	A	B	C	E	F
90°	3 3/4	5 1/4	2 3/8	5/8	2
105°	4 1/2	5 1/4	3 3/8	5/8	2

DOOR RECESSED 1/8" HEADERS 4" OR OVER

OFFSET	A	B	C	E	F
90°	3 3/4	5 1/4	2 3/8	5/8	2
105°	4 3/16	5 1/4	3 3/8	5/8	2

NOTE:
DOOR MFG. TO SUPPLY APPROPRIATE SPACER & BACK-UP PLATES
CHAMFER ALL 3 TAP HOLES ON SPACER: 1/32 x 45°



I HEADER PREPARATION

- A. DIM A MUST BE MAINTAINED FROM JAMB TO CENTER LINE OF SPINDLE.
- B. 'F' MUST BE MAINTAINED FROM PIVOT SIDE OF HEADER TO C OF SPINDLE REGARDLESS OF HEADER WIDTH
- C. FOR MORE DETAILS REFER TO TEMPLATE# 10-137

II PIVOT INSTALLATION

- A. REFER TO TEMPLATES REQUIRED.

III DOOR PREPARATION

- A. ROUTE TOP OF DOOR FOR SLIDE CHANNEL INSTALLATION. (DETAIL A-A). ON ALUM DOORS, SPACERS MAY BE NEEDED TO MAINTAIN REQ. 11/32" DIM. SEE X-X
- B. ROUTING IS NEEDED ON STOP SIDE OF DOOR FOR ARM CLEARANCE. SEE B-B

IV DOOR INSTALLATION

- A. SET ON PIVOTS, ADJUST FOR CLEARANCES.

V COMPLETE INSTALLATION

- A. MOUNT ARM ON SPINDLE AND SECURE WITH 1/4-20 x 7/8" SOC. HD. CAP SCREW PROVIDED.
- B. OPEN DOOR AND ACTUATE ARM INTO OPEN POS., SLIP ARM OVER SLIDE PIN AND SECURE WITH PIN RETAINER.
- C. ADJUST CLOSER TO DESIRED DOOR SPEED. INSTALL ARM COVER WITH SCREWS PROVIDED.

B 01/26/00	REVISE TABLE LOCATIONS	ECN1337	RM
DIMENSIONAL TOLERANCES UNLESS OTHERWISE SPECIFIED		APPROVALS DATE	
DECIMAL DIMENSIONS .XX ± .010		APPROVED	
DECIMAL DIMENSIONS .XXX ± .005		CHECKED	
ANGULAR ± ° FRACTIONAL ± 1/64		DRAWN RM	6/7/97
FILE NO. 10-947	MATERIAL	SCALE	NONE
NEXT ASSY. 21-201-KITS	FINISH	-INSTALLATION GUIDE-	
QTY. USED 1	HEAT TREAT	20-330 CLOSER WITH 20-900 PKG ON ALUM HEADER WITH ALUM DOOR ON OFFSET PIVOTS	SHEET 1 OF 1 SHEETS DWG. NO. 10-947



JED-201-S TYPE SERIES