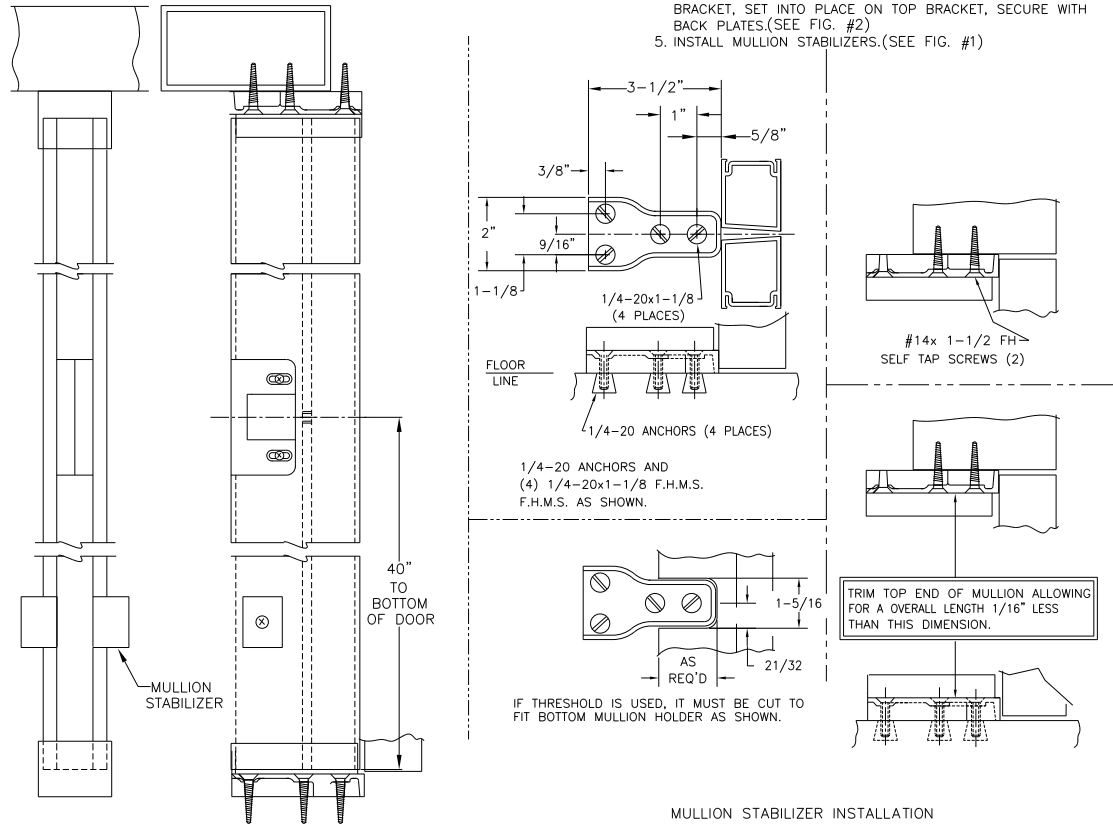


# REMOVABLE MULLION INSTRUCTIONS

## MULLION INSTALLATION

1. FIELD NOTCH THRESHOLD AS SHOWN BELOW.
2. MOUNT TOP AND BOTTOM BRACKETS AS SHOWN.
3. CHECK MULLION FOR CORRECT LENGTH FROM BOTTOM OF MULLION TO CENTERLINE OF STRIKE.
  - A. CUT BOTTOM IF NECESSARY.(CUSTOM OR W/O THRESHOLD.)
  - B. CUT TO PROPER OVERALL LENGTH.
4. SLIP INTO TOP BRACKET, PICK-UP AND SWING INTO BOTTOM BRACKET, SET INTO PLACE ON TOP BRACKET, SECURE WITH BACK PLATES.(SEE FIG. #2)
5. INSTALL MULLION STABILIZERS.(SEE FIG. #1)



## MULLION STABILIZER INSTALLATION

1. MOUNT MULLION PORTION TO MULLION AS SHOWN
2. CLOSE DOOR, POSITION DOOR PORTION AS SHOWN.
3. MARK HOLES, DRILL & TAP FOR 10-24 OVAL HEAD. FASTEN TO DOOR STILE.

