

NOTE: (H)  
 THIS PRODUCT IS DESIGNED AND MFRG. TO MEET  
 CLASSIFICATION NO. 37601322B,  
 EN1125 STANDARD.

(H) THE SAFETY FEATURES OF THIS PRODUCT ARE  
 ESSENTIAL TO IT'S COMPLIANCE WITH EN 1125.  
 NO MODIFICATION OF ANY KIND, OTHER THAN  
 THOSE DESCRIBED IN THESE INSTRUCTIONS, ARE  
 PERMITTED.

(H) RECOMMENDATIONS FOR MAINTENANCE:

IT IS RECOMMENDED THAT THE FOLLOWING ROUTINE MAINTENANCE  
 CHECKS SHOULD BE TAKEN AT INTERVALS OF NOT MORE THAN  
 ONE MONTH BY THE OCCUPIER OR HIS APPROVED REPRESENTATIVE:

- A) INSPECT AND OPERATE THE PANIC DEVICE TO ENSURE  
 THAT ALL COMPONENTS ARE IN A SATISFACTORY WORKING  
 CONDITION;
- B) ENSURE THAT THE KEEPER(S) IS (ARE) FREE FROM  
 OBSTRUCTION.

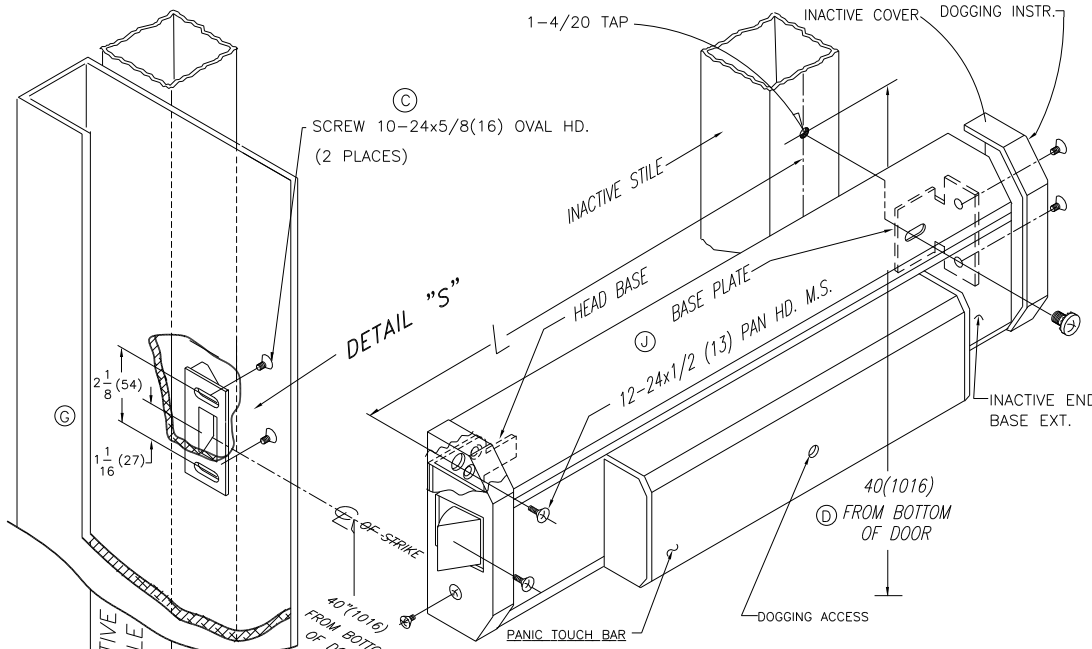
MOUNTING INSTRUCTIONS:

1. PREPARE LOCK STILE PER TEMPLATE NO. 10-935 DRILL CYLINDER  
 MOUNTING HOLES IF REQUIRED.
2. LOCATE CENTERLINE OF CYLINDER ON EXTERIOR OF DOOR AND  
 DRILL IF REQUIRED.
3. TRIM TAIL PIECE TO FIT INTO PANIC DRIVE BUSHING ASSEMBLY.
4. MOUNT CYLINDER AND SECURE WITH MOUNTING SCREWS  
 (SUPPLIED BY LOCK MFG.)IF TRIM IS REQ'D PREP. PER 10-997
6. LOCATE MOUNTING HOLE ON INACTIVE STILE DRILL & TAP  
 1/4-20 THDS. 40"(1016) FROM BTM. OF DOOR .
7. PANIC ATTACHMENT

- REMOVE FRONT AND REAR END BASE COVERS BY RELEASING 6-32 x  
 3/16(5) FLAT HD. SCREWS. SECURE ACTIVE END OF PANIC BY INSTALLING 2  
 (J) EACH 12-24x1/2 (13) PAN HD.M.S.  
 SECURE INACTIVE END WITH SINGLE 1/4-20x1/2(13) ROUND HD.  
 M.S. (PHIL.) WITH SEMS THROUGH INACTIVE BASE PLATE. PROCEED BY  
 RE-INSTALLING BASE COVERS ON EACH END OF PANIC BASE.
8. TO INSTALL STRIKE LOCATE 10-24 TAPS ON ACTIVE STILE (2 PLACES).
  9. MOUNT AND SECURE STRIKE. (REF. DETAIL "S")
  10. CHECK OPERATION OF ALL PARTS INCLUDING CYLINDER IF BEING USED  
 TO ASSURE PROPER OPERATION.

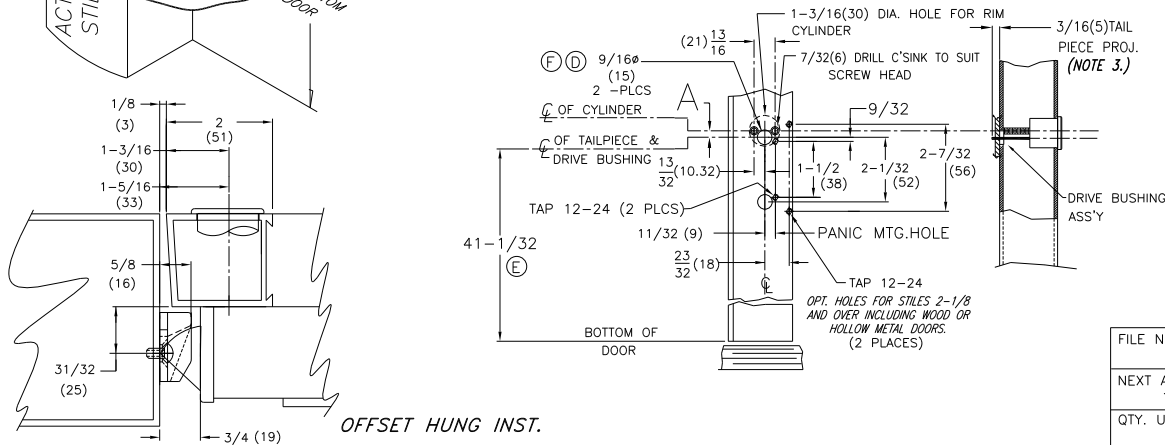
DOGGING INSTRUCTIONS:

- TO DOG-INSERT HEX. KEY TURN CLOCKWISE UNTIL IT STOPS, FULLY DEPRESS  
 TOUCH BAR THEN RELEASE.  
 TO UNDOG-INSERT HEX KEY TURN CLOCKWISE UNTIL IT STOPS, TOUCH BAR WILL RELEASE.



FUNCTIONAL CYLINDERS	A	DOOR OPENING	L
ILCO		36"(914)	33"(838)
LOCKWOOD		48"(1219)	45"(1143)
YALE	1/4 (6)		
CORBIS			
SCHLAGE			
RUSSWIN			
WELCH			
KEIL			
SARGENT	3/8" (10)		

MODEL 1295



J 1.24.06	12-24 PAN HD WAS FLAT	ECN1981	RM
H 5.26.05	ADD EN1125 SPECIFICATIONS (STANDARDS)	ECN1841	RM
G 6.25.03	2-1/8 WAS 1-13/16	ECN1625	RM
F 06/21/01	ADD 41-1/32 9/16 WAS 19/32 DIM	ECN1502	RM
E 06/21/01	ADD 41-1/32 DIM	ECN1501	RM
D 05/31/00	40" WAS 37 ADD 2nd 19/32" HOLE	ECN1377	RM
C 04/17/00	12-24 CALLOUT WAS 10-32	ECN1366	RM
B 7/7/99	12-24 TAP WAS 8-32	ECN1267	RM

DIMENSIONAL TOLERANCES UNLESS OTHERWISE SPECIFIED	APPROVALS	DATE
DECIMAL DIMENSIONS .XX ± .010	APPROVED	
DECIMAL DIMENSIONS .XXX ± .005	CHECKED	
ANGULAR ± ° FRACTIONAL ± 1/64	DRAWN	RM 5/5/99

FILE NO. 10-936	MATERIAL NONE	SCALE NONE	INSTALLATION GUIDE 1295 RIM DEVICE "C" TYPE STRIKE	SHEET 1 OF 1 SHEETS DWG. NO. 10-936 REV. J
NEXT ASSY. 1295-KITS	FINISH NONE			
QTY. USED 1	HEAT TREAT			



