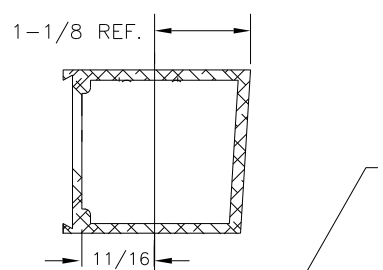
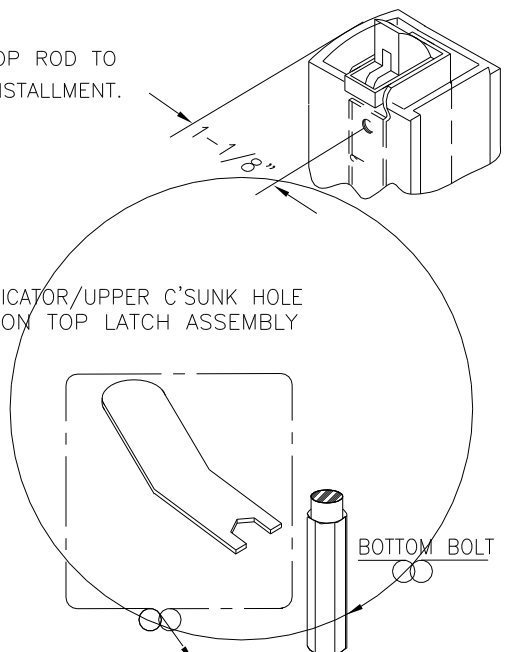


USAGE: 1085,2086,1285

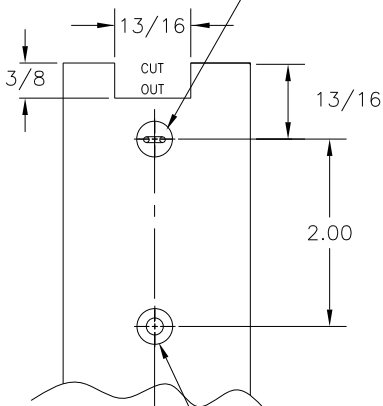
*CUT 2" FROM EXISTING TOP ROD TO ALLOW FOR LATCH ASSY INSTALLMENT.



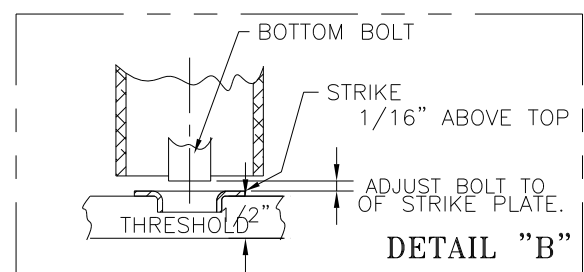
SLOT INDICATOR/UPPER C'SUNK HOLE ON TOP LATCH ASSEMBLY



REF. DWG. 10-860 FOR COMPLETE INSTRUCTIONS (ADJUSTMENT WRENCH)



FOR 10-32 FHMS DRILL & C'SINK (2 PLACES)



- TOP PULLMAN LATCH ASS'Y INSTALLMENT**
1. ROTATE LATCH ASSEMBLY WITH NYLON SPACER AS PER FIG. (1) UNTIL SLOT INDICATOR() ALIGNS ITSELF WITHIN THE MIDDLE OF UPPER C'SUNK MTG. HOLE. (PANIC ASSEMBLY AND ROD AND CASE ASS'Y MUST BE IN THE UNDOGGED POSITION.)
 - #2. ONCE OVAL SHAPED SLOT REACHES MIDDLE OF UPPER C-SUNK HOLE ON STILE REMOVE NYLON SPACER THEN DEPRESS TRIGGER PORTION, PULLMAN LATCH WILL SHIFT VERTICALLY APPROX. 1/2" ALLOWING FOR INSTALLMENT OF 2 EA. 10-32x1/4 FHMS UNDERCUT. NOTE-EACH HOLE AT THIS POINT MUST BE ALIGNED OR MATCH C'SINK ON DOOR STILE.

- OPERATIONS CHECK:**
1. DEPRESS PANIC FULLY, TOP LATCH SHOULD ROTATE FLUSH WITH STILE AND BOTTOM BOLT WILL MOVE FLUSH WITH BTM STILE. MANUALLY DEPRESS TRIGGER ALLOWING FOR ENTIRE SYSTEM TO DIS-ENGAGE.

- REMOVAL,RE-ADJUSTMENT OR REPLACEMENT:**
1. IF SYSTEM DOES NOT REACT OR RELEASE, REMOVE FASTENERS AND ROTATE PULLMAN ASS'Y ONE ROTATION CLOCKWISE OR COUNTERCLOCKWISE, THEN REPEAT STEP #2. NOTE: TOP LATCH WILL NEED TO BE PULLED UPWARDS TO THE OPEN POSITION, NYLON SPACER NEEDS TO BE INSERTED AGAIN BEFORE THE LATCH ASSEMBLY WILL ROTATE.

- BOTTOM BOLT ADJUSTMENT:**
1. FULLY DEPRESS PUSH BAR, RETRACTING PULLMAN LATCH AND BOTTOM ROD. ADJUST BOTTOM BOLT PER DETAIL "B"

DIMENSIONAL TOLERANCES UNLESS OTHERWISE SPECIFIED		APPROVALS	DATE
DECIMAL DIMENSIONS .XX	± .010	APPROVED	
DECIMAL DIMENSIONS .XXX	± .005	CHECKED	
ANGULAR ± °	FRACTIONAL ± 1/64	DRAWN	R.M. 03/05/01
MATERIAL		SCALE	NONE

RETRO-FIT PULLMAN LATCH GUIDE

JACKSON CORPORATION

3447 UNION PACIFIC AVE. LOS ANGELES, CALIF. 90023

NEXT ASSY. 30-2775-XXX	FINISH
QTY. USED 1	HEAT TREAT

SHEET 1 OF 1 SHEETS
DWG. NO. 10-1112
REV. 1