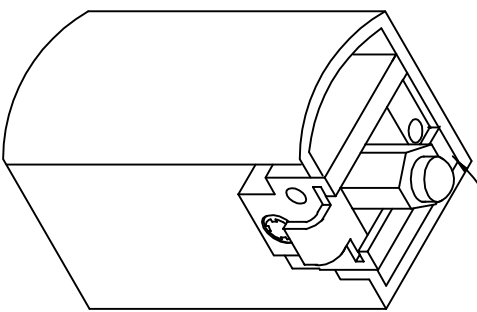


TOP BOLT GUIDE ASSY



**ADJUSTMENT INSTRUCTIONS.**

- B** PLACE ADJUSTMENT WRENCH ONTO BOLT. TURN WRENCH CLOCKWISE TO RETRACT BOLT—COUNTERCLOCKWISE TO EXTEND BOLT.
- C**

**NOTE:**

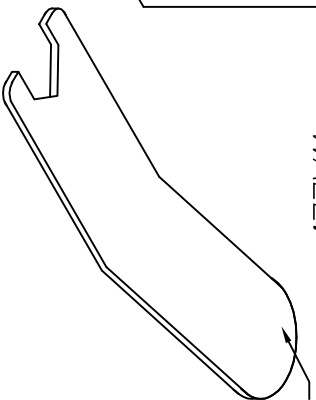
TOP BOLT GUIDE ASSY USED WITH THE FOLLOWING:

1085, 1285, 1206, 2086 & 3186

USAGE: 1085, 2085, 2086,

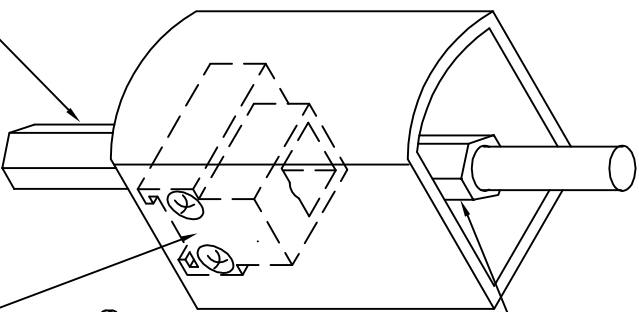
3185B & 3186, 1285, 1206

**NOTE:**  
UPON FINAL ADJUSTMENT, ASSURE THAT FLAT ON HEX. BOLT RUNS PARALLEL TO FACE OF STYLE WALL.



ADJUSTMENT WRENCH

BOTTOM HEX. BOLT  
BOTTOM BOLT GUIDE ASSY



FILE NO.	FINISH	HEAT TREAT	ADJUSTMENT INSTRUCTIONS	TOP & BTM BOLT GUIDE ASSY	10-860
NEXT ASSY.					
QTY. USED	1				
D 11/05/05 UPDATE MODEL USAGE: ADJ 1285 EGN11973 RM C 11/3/97 REVISE ADJ. INSTRUCTIONS EGN1116 RM B 1/5/95 REVISE ADJ. INSTRUCTIONS EGN982 RM DIMENSIONAL TOLERANCES UNLESS OTHERWISE SPECIFIED APPROVALS DATE DECIMAL DIMENSIONS .XX ± .010 CHECKED DECIMAL DIMENSIONS .XXX ± .005 DRAWN R.M. 11/4/95 ANGULAR ± ° FRACTIONAL ± 1/64 SCALE NONE MATERIAL FINISH HEAT TREAT 3447 UNION PACIFIC AVE. LOS ANGELES, CALIF. 90023 <b>Jackson</b> CORPORATION SHEET 1 OF 1 SHEETS DWG. NO. REV.					

**MOUNTING INSTRUCTIONS:**

1. PREPARE ACTIVE STILE INSIDE FACE PER SHFT. 2 OF 2, OR USE TEMPLATE 10-942

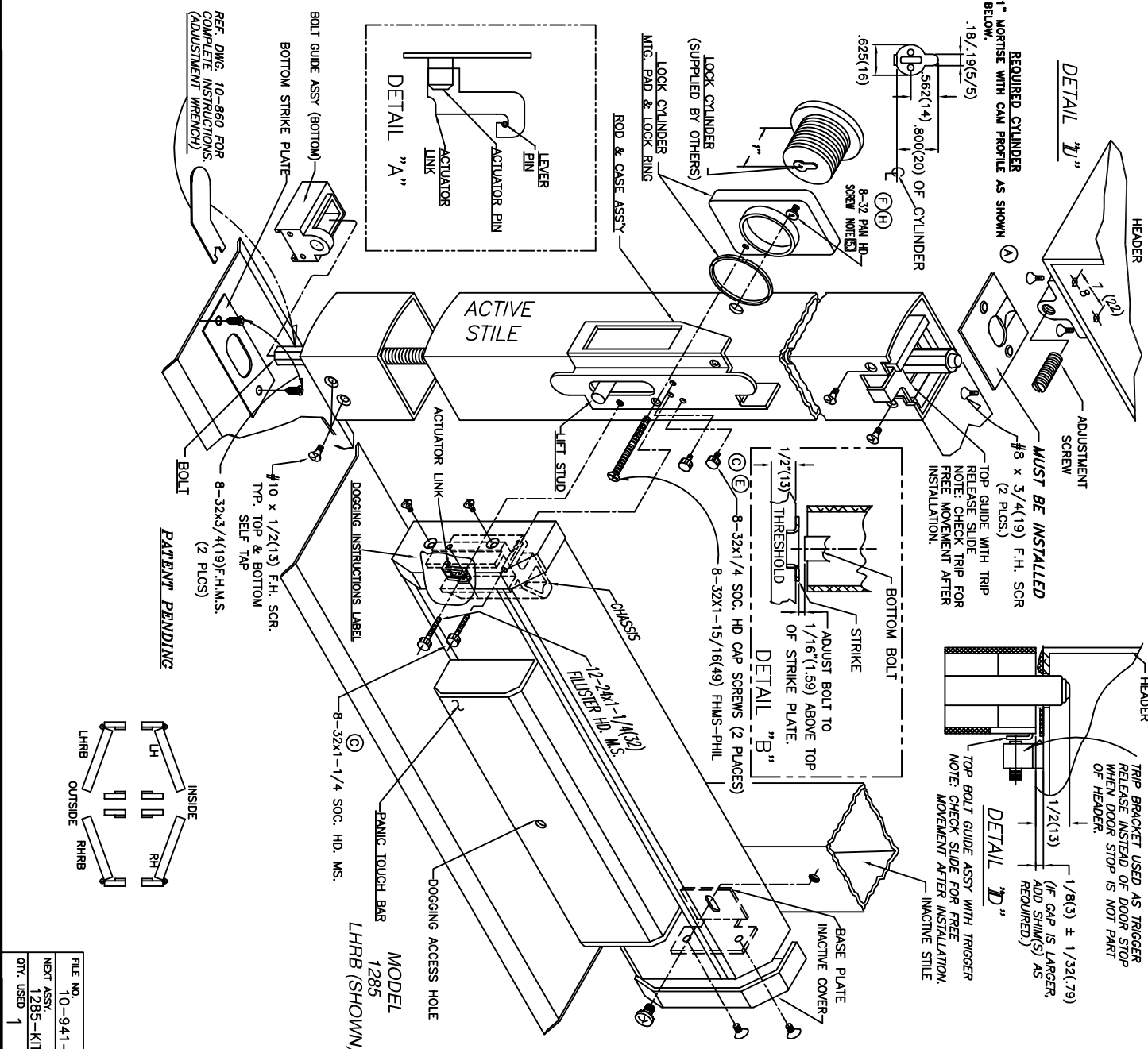
- ① 2. INSTALL ROD & CASE ASS'Y INTO ACTIVE STILE. SECURE WITH 2 EA. 8-32x 1/4 SOC. HD. CAP SCREWS.
3. INSTALL TOP & BOTTOM STRIKES WITH 2 EA. #8x3/4(19) SELF-TAP SCREWS.
- ④ 4. IF TRIM OR CYLINDER ARE NOT BEING USED, SKIP NOTE 5.
- ⑤ AS PER LOCK PAD VIEW SHOWN, INSTALL ONE 8-32 PAN HD. SCREW PARTIALLY TO SUIT NOMINAL WALL THICKNESS OF 1/8" OR 3/16". INSTALL PAD ASS'Y, AND ROTATE CLOCKWISE UNTIL IT LOCKS INTO POSITION, NOW INSTALL SINGLE 8-32 x 1-15/16" SCREW & TIGHTEN.
- NOTE: USE 8-32x5/16 PAN HD. ON 1/8" WALL THICKNESS. USE 8-32x5/8 PAN HD. ON 3/16" WALL THICKNESS.
- IF TRIM IS BEING USED, FOLLOW INSTALLATION GUIDE NO. 10-990 (WITH TRIM).
6. UNDGO PANIC DEVICE PER DODGING INSTRUCTION LABEL ON ACTIVE COVER.
7. PANIC ATTACHMENT.

8. REMOVE FRONT AND REAR END BASE COVERS BY RELEASING 8-32x3/16(5) FLAT HD. SCREWS. SECURE ACTIVE END OF PANIC BY INSTALLING ONE 12-24x1-1/4(32) FILLISTER HD. SCREW THROUGH CHASSIS AND ONE 8-32x1-1/4 SOC. HD. MS. SECURE INACTIVE END WITH SINGLE 1/4-20x1/2(13) ROUND HD. MS. (PHIL.) WITH SEALS THROUGH INACTIVE BASE PLATE. PROCEED BY RE-INSTALLING BASE COVERS ON EACH END OF PANIC BASE.
9. ADJUST TOP & BOTTOM BOLTS ALLOWING FOR 1/2(13) OF BOLT TO EXTEND FROM VERTICAL STILE (REF. DETAIL "J"). INSTALL BOLT GUIDES TOP & BOTTOM WITH (2) EACH #10x1/2(13) FL. HD. SELF-TAPPING SCREWS. (SEE DWG. 10-860)
10. DEPRESS PUSH BAR. TOP BOLT SHOULD LOCK IN THE RETRACTED (UNLOCKED) POSITION. IF LOCKING DOES NOT OCCUR READJUST BOLTS W/HALF TURN INCREASING UNTIL LOCKING OCCURS. VERIFY OPERATION BY FULLY DEPRESSING TOUCH BAR TO ACHIEVE DODGING OR FULL RETRACTION OF BOLTS.
11. TOP BOLT ADJUSTMENT:
  1. RELEASE TOP AND BOTTOM BOLTS BY DEPRESSING TRIGGER ON TOP BOLT GUIDE ASSEMBLY.
  2. POSITION TOP BOLT 1/2(13) FROM TOP EDGE OF ACTIVE STILE.
  3. BOTTOM BOLT ADJUSTMENT:
    1. FULLY DEPRESS PUSH BAR, RETRACTING TOP AND BOTTOM RODS. ADJUST BOTTOM BOLT PER DETAIL "g".
    2. MANUAL CHECK:
      1. WITH TOP AND BOTTOM BOLTS FULLY RETRACTED, DEPRESS TRIGGER RELEASE. RODS WILL THEN EXTEND TO THE LOCKED POSITION.
      2. INSTALL TRIP BRACKET (REF. DETAIL "J") AND ADJUST SET SCREW SO THAT WHEN DOOR CLOSÉS, TOP BOLT GUIDE TRIGGER CONTACTS SET SCREW AND ALLOWS BOLTS TO EXTEND.

**DODGING INSTRUCTIONS:**

TO DOG- INSERT HEX KEY TURN CLOCKWISE UNTIL IT STOPS. FULLY DEPRESS TOUCH BAR, THEN RELEASE.

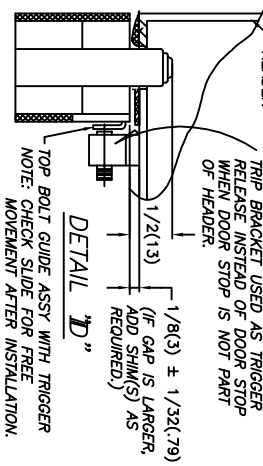
TO UNDGO- INSERT HEX KEY TURN CLOCKWISE UNTIL IT STOPS. TOUCH BAR WILL RELEASE.



**REQUIRED CYLINDER**  
 1" MORRISSE WITH CAM PROFILE AS SHOWN BELOW.  
 .18/.19(5/32)

**MUST BE INSTALLED**  
 #8 x 3/4(19) F.H. SCR (2 PLS.)

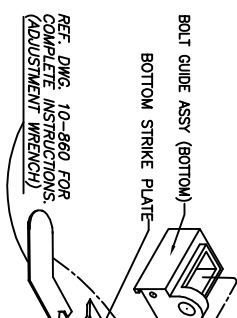
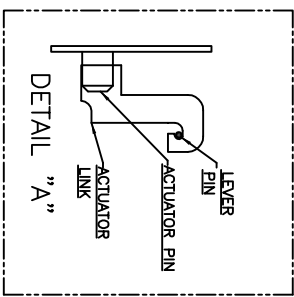
TOP GUIDE WITH TRIP RELEASE SLIDE  
 NOTE: CHECK TRIP FOR FREE MOVEMENT AFTER INSTALLATION.



**DETAIL "B"**  
 1/2(13) THRESHOLD

ADJUST BOLT TO 1/16(1.59) ABOVE TOP OF STRIKE PLATE.

**DETAIL "A"**  
 LEVER  
 PIN  
 ACTUATOR  
 LINK



**ACTIVE STILE**

ACTUATOR LINK

LIFT STUD

CHASSIS

12-24x1-1/4(32) FILLISTER HD. MS.

BASE PLATE  
INACTIVE COVER

DOGGING INSTRUCTIONS LABEL

DOGGING ACCESS HOLE

PANIC TOUCH BAR  
LHRB (SHOWN)

MODEL 1285

8-32x1-1/4 SOC. HD. MS.

#10 x 1/2(13) F.H. SCR. TOP, TOP & BOTTOM SELF TAP (2 PLS.)

8-32x3/4(19) F.H.M.S.

REF. DWG. 10-860 FOR COMPLETE INSTRUCTIONS (ADJUSTMENT WRENCH)

**PATENT PENDING**

LH RH  
LHRB RHRB

FILE NO.	10-941-1	FINISH	NONE	INSTALLATION GUIDE	DWG. NO.	1285
NEXT ASSY.	1285-KITS	HEAT TREAT		CVR PANIC DEVICE	10-941-1	L
QTY. USED	1					

L 21379	REMOVE ALL REF. FOR "S" SPACER	EQW2085	RM
K 52605	REF. PAGE 2 OF 2	EQW1841	RM
DIMENSIONAL TOLERANCES UNLESS OTHERWISE SPECIFIED			
DECIMAL DIMENSIONS	XX ± .010	APPROVALS	DATE
ANGULAR ±	° FRACTIONAL ± 1/64	CHECKED	
		DRAWN	5/29/99
MATERIAL SCALE NONE			

**Jackson**  
 CORPORATION  
 447 LINCOLN PARKING GARAGE  
 LOS ANGELES, CALIF. 90023

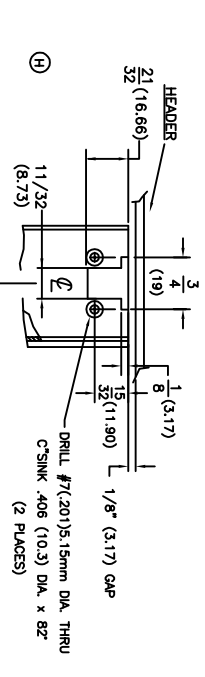
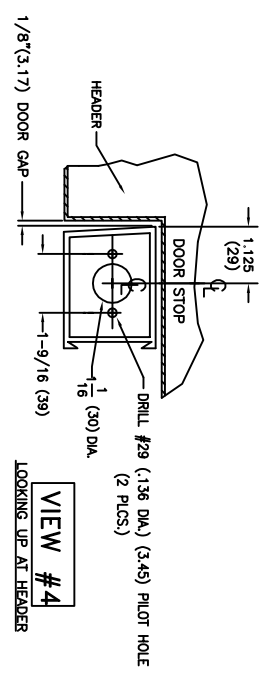
SHEET 1 OF 2 SHEETS  
 REV.

NOTE: (X) THIS PRODUCT IS DESIGNED AND MFRG. TO MEET CLASSIFICATION NO. 37601321B, EN1125 STANDARD.

(X) THE SAFETY FEATURES OF THIS PRODUCT ARE ESSENTIAL TO ITS COMPLIANCE WITH EN 1125. NO MODIFICATION OF ANY KIND, OTHER THAN THOSE DESCRIBED IN THESE INSTRUCTIONS, ARE PERMITTED.

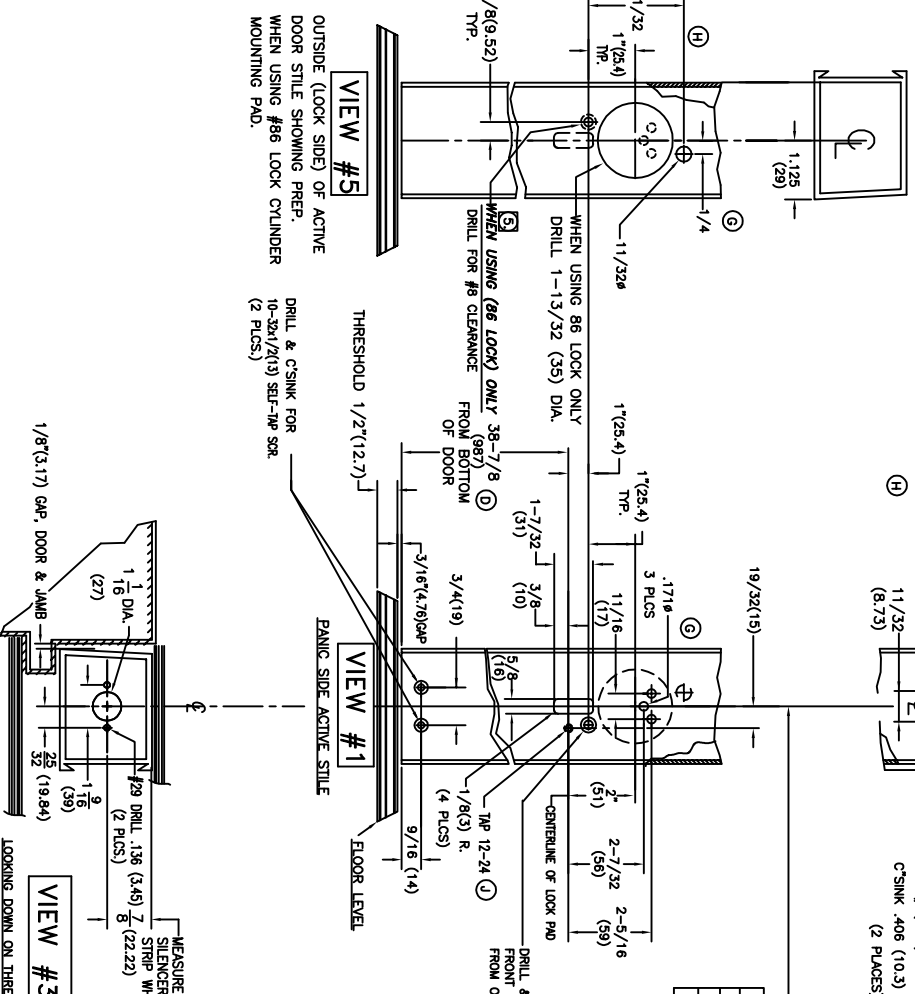
(X) RECOMMENDATIONS FOR MAINTENANCE: IT IS RECOMMENDED THAT THE FOLLOWING ROUTINE MAINTENANCE CHECKS SHOULD BE TAKEN AT INTERVALS OF NOT MORE THAN ONE MONTH BY THE OCCUPIER OR HIS APPROVED REPRESENTATIVE:  
 A) INSPECT AND OPERATE THE PANIC DEVICE TO ENSURE THAT ALL COMPONENTS ARE IN A SATISFACTORY WORKING CONDITION;  
 B) ENSURE THAT THE KEPPER(S) IS (ARE) FREE FROM OBSTRUCTION.

ROUTING INSTRUCTIONS:  
 1. PREPARE INSIDE FACE (PANIC SIDE) OF ACTIVE STILE PER VIEW #1 & TEMPLATE 10-942.  
 2. PREPARE INSIDE FACE (PANIC SIDE) OF HINGE STILE PER VIEW #2 & TABLE "A".  
 3. PREPARE THRESHOLD PER VIEW #3.  
 4. PREPARE HEADER PER VIEW #4.  
 5. IF CYLINDER OR TRIM IS BEING USED, SEE DRILL TEMPLATE NO. 10-956 OR 10-987 WITH TRIM AS APPROPRIATE.  
 6. FOR MOUNTING AND ADJUSTMENTS OF THE 1285 SEE OPPOSITE SIDE THIS PAGE. (DWG. 10-941 SHEET 1 OF 2)



DOOR	2\"/>
3/0	32-29/32(836)
3/6	36-29/32(988)
4/0	44-29/32(1141)

MODEL 1285 LHRB (SHOWN)



PART NO.	10-941-2		
HEAT ASST.	1285-KITS		
FINISH			
HEAT TRAY			
MANUFACTURE	3/1/88	SCALE	NONE
DATE	07/9/99		
APPROVED			
CHECKED			
DRAWN			
REVISIONS			
REV	DESCRIPTION	DATE	BY
1	INITIAL DIMENSIONS	3/02	EW
2	REVISION		
3	REVISION		
4	REVISION		
5	REVISION		

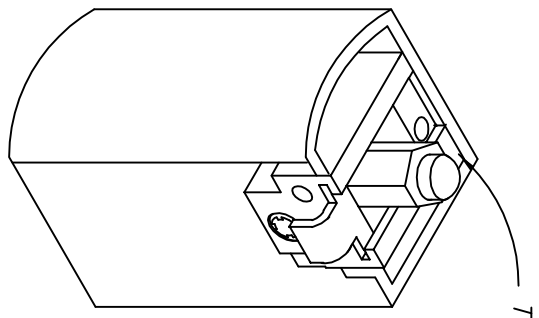
DESIGNED	RM
DRAWN	EW
CHECKED	EW
APPROVED	EW
PROJECT	EN1511
DATE	07/99
SHEET 2 OF 2 SHEETS	



ROUING INSTRUCTIONS  
 1285 CVR PANIC DEVICE  
 DWG. NO.  
 10-941-2

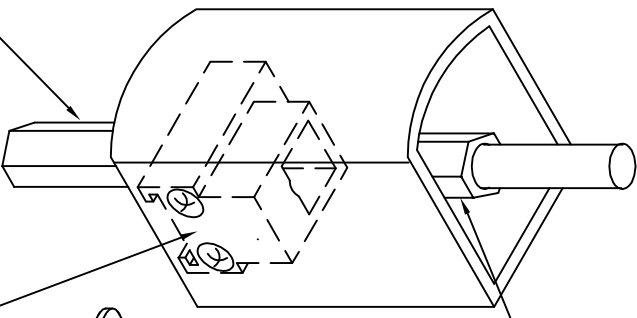
USAGE: 1085, 2085, 2086,  
 Δ 3185B & 3186, 1285, 1206

ADJUSTMENT INSTRUCTIONS.

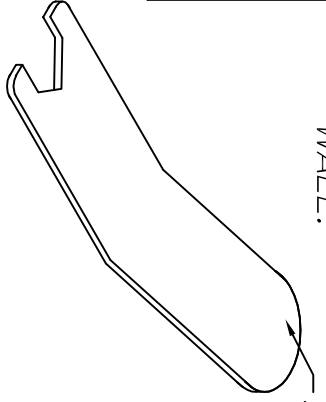


**B** PLACE ADJUSTMENT WRENCH ONTO BOLT. TURN WRENCH CLOCKWISE TO RETRACT BOLT-COUNTERCLOCKWISE TO EXTEND BOLT.

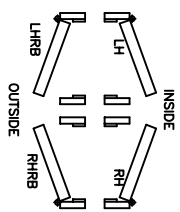
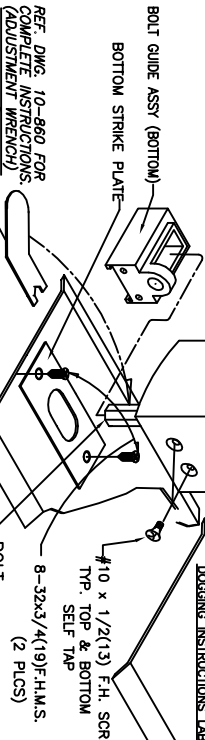
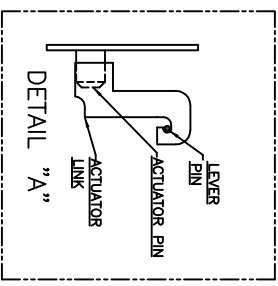
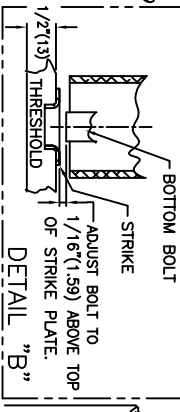
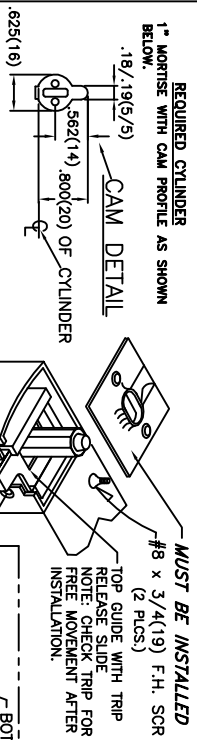
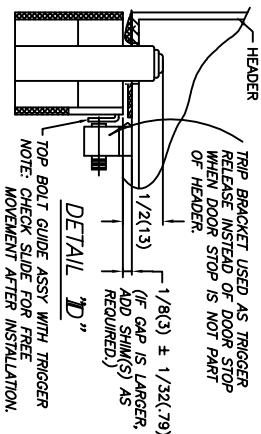
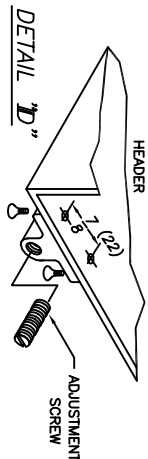
NOTE:  
 TOP BOLT GUIDE ASSY USED WITH THE FOLLOWING:  
 1085, 1285, 1206, 2086 & 3186



NOTE:  
 UPON FINAL ADJUSTMENT, ASSURE THAT FLAT ON HEX. BOLT RUNS PARALLEL TO FACE OF STYLE WALL.



FILE NO.	FINISH	HEAT TREAT	ADJUSTMENT INSTRUCTIONS	TOP & BTM BOLT GUIDE ASSY	10-860
NEXT ASSY.					
QTY. USED	1				
D 11/05/05	UPDATE MODEL USAGE: ADJ 1285	ECN11973	RM		
C 11/3/97	REVISE ADJ. INSTRUCTIONS	ECN1116	RM		
B 1/5/95	REVISE ADJ. INSTRUCTIONS	ECN982	RM		
DIMENSIONAL TOLERANCES UNLESS OTHERWISE SPECIFIED		APPROVALS	DATE		
DECIMAL DIMENSIONS .XX ± .010	CHECKED				
DECIMAL DIMENSIONS .XXX ± .005	DRAWN	R.M.	11/4/95		
ANGULAR ± ° FRACTIONAL ± 1/64	MATERIAL	SCALE	NONE		
3447 UNION PACIFIC AVE. LOS ANGELES, CALIF. 90023					
SHEET 1 OF 1 SHEETS			REV.		



**MOUNTING INSTRUCTIONS:**

1. PREPARE ACTIVE STILE INSIDE FACE PER SHIT. 2 OF 2. OR USE TEMPLATE 10-942
2. INSTALL ROD & CASE ASSY INTO ACTIVE STILE. SECURE WITH 2 EA. 8-32x1/4 SOC. HD. CAP SCREWS.
3. INSTALL TOP & BOTTOM STRIKES WITH 2 EA. #8x3/4(19) SELF-TAP SCREWS.
4. IF TRIP OR CYLINDER ARE NOT BEING USED, SKIP NOTE 5. FOR INSTALLMENT OF PUSHBAR MORTISE CYLINDER DOGGING. SEE DRAWING 10-979 RE-KEY/CYL. INSTALLMENT INSTRUCTIONS.
5. AS PER LOCK PAD VIEW SHOWN, INSTALL ONE 8-32 PAN HD. SCREW PARTIALLY AND ROTATE CLOCKWISE UNTIL IT LOOKS INTO POSITION, NOW INSTALL SINGLE 8-32 x 1-15/16" SCREW & TIGHTEN.

6. UNDOG PANIC DEVICE PER DOGGING INSTRUCTION LABEL ON ACTIVE COVER.
7. PANIC ATTACHMENT
8. REMOVE FRONT AND REAR END BASE COVERS BY RELEASING 6-32x3/16(5) FLAT HD. SCREWS. SECURE ACTIVE END OF PANIC BY INSTALLING ONE 12-24(1-14)(2) FULLER HD. SCREW THROUGH CHASSIS AND ONE 8-32x1-1/4 SOC. HD. MS. SECURE INACTIVE END WITH SINGLE 1-4-20(1/213) ROUND HD. M.S. (PHIL.) WITH SENS THROUGH INACTIVE BASE PLATE. PROCEED BY RE-INSTALLING BASE COVERS ON EACH END OF PANIC. BASE
9. ADJUST TOP & BOTTOM BOLTS ALLOWING FOR 1/2(13) OF BOLT TO EXTEND FROM VERTICAL STILE (REF. DETAIL "B"). INSTALL BOLT GUIDES TOP & BOTTOM WITH (2) EACH #10x1/2(13) FL. HD. SELF-TAPPING SCREWS. (SEE DWG. 10-860)
10. DEPRESS PUSH BAR. TOP BOLT SHOULD LOCK IN THE RETRACTED (UNLOCKED) POSITION. IF LOCKING DOES NOT OCCUR, READJUST BOLTS W/HALF TURN INCREMENTS UNTIL LOCKING OCCURS. VERIFY OPERATION BY FULLY DEPRESSING TOUCH BAR TO ACHIEVE DOGGING OR FULL RETRACTION OF BOLTS.

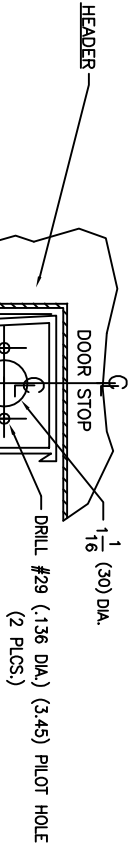
1. RELEASE TOP AND BOTTOM BOLTS BY DEPRESSING TRIGGER ON TOP BOLT GUIDE ASSEMBLY.
2. POSITION TOP BOLT 1/2(13) FROM TOP EDGE OF ACTIVE STILE.
3. BOTTOM BOLT ADJUSTMENT:
4. FULLY DEPRESS PUSH BAR, RETRACTING TOP AND BOTTOM RODS. ADJUST BOTTOM BOLT PER DETAIL "B"
5. MANUAL CHECK:
6. WITH TOP AND BOTTOM BOLTS FULL RETRACTED, DEPRESS TRIGGER RELEASE. RODS WILL THEN EXTEND TO THE LOCKED POSITION.
7. INSTALL TRIP BRACKET (REF. DETAIL "C") AND ADJUST SET SCREW SO THAT WHEN DOOR CLOSERS, TOP BOLT GUIDE TRIGGER CONTACTS SET SCREW AND ALLOWS BOLTS TO EXTEND.

- DOGGING INSTRUCTIONS:
- TO DOG--DEPRESS BAR/INSERT KEY AND TURN COW UNTIL IT STOPS--RETURN KEY TO ORIGINAL POSITION THEN REMOVE.
- TO UNDOG--INSERT KEY AND TURN CW UNTIL IT STOPS, RETURN KEY TO ORIGINAL POSITION THEN REMOVE.

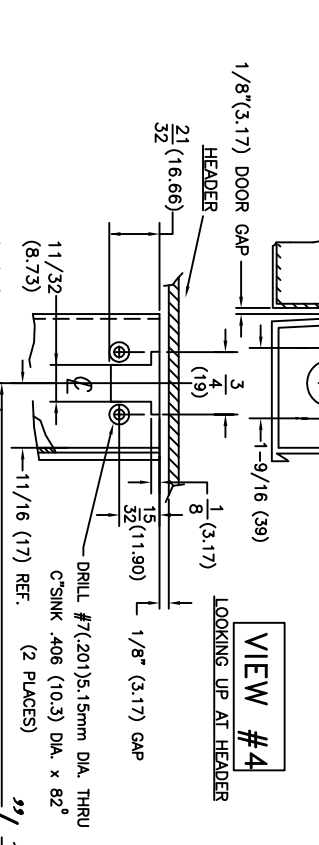
FILE NO.	10-974-1	FINISH	NONE	INSTALLATION GUIDE	10-974-1
NEXT ASSY.	1285C-KITS	HEAT TREAT			
QTY. USED	1				
G 2.17.09 REMOVE ALL REF. FOR "S" SPACER		EOND085		RM	RM
F 3.8.04 ADD SPACER DETAIL "S" SEE DETAIL ON Pg. 2 of 2	APPROVALS	DATE	ECN1753	RM	RM
DIMENSIONAL TOLERANCES UNLESS OTHERWISE SPECIFIED	APPROVED				
DECIMAL DIMENSIONS .XX ± .010	CHECKED				
ANGULAR ± .01 FRACTIONAL ± 1/64	DRAWN	RM	04/07/00		
MATERIAL	SCALE	NONE			
SHEET 1 OF 2 SHEETS		JACKSON CORPORATION		447 UNION PACIFIC AVE. BOULDER, CO 80501	
DWG. NO.		1285C CVR PANIC DEVICE		REV.	
HEAT TREAT				G	

**ROUTING INSTRUCTIONS:**

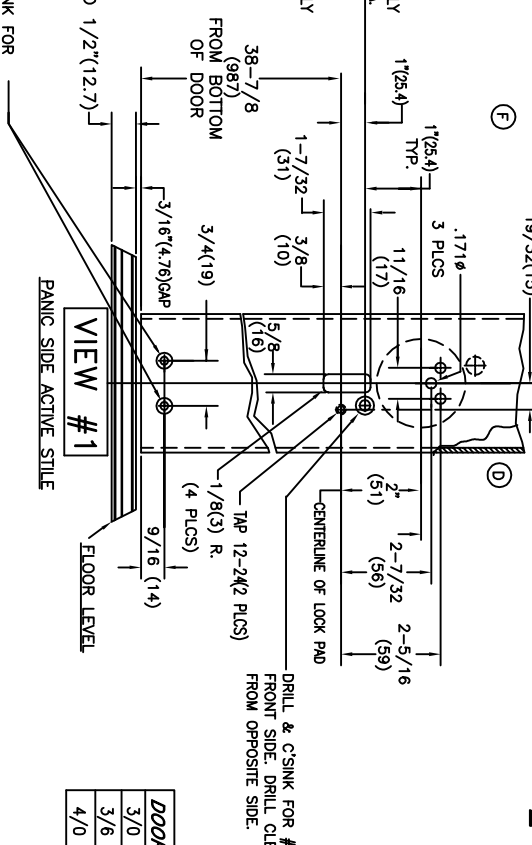
1. PREPARE INSIDE FACE (PANIC SIDE) OF ACTIVE STYLE PER VIEW #1 & TEMPLATE 10-974.
2. PREPARE INSIDE FACE (PANIC SIDE) OF HINGE STYLE PER VIEW #2 & TABLE "A".
3. PREPARE THRESHOLD PER VIEW #3.
4. PREPARE HEADER PER VIEW #4.
5. IF CYLINDER OR TRIM IS BEING USED, SEE DRILL TEMPLATE NO. 10-956 OR 10-987 WITH TRIM AS APPROPRIATE.
6. FOR MOUNTING AND ADJUSTMENTS OF THE 1285C SEE OPPOSITE SIDE THIS PAGE. (DWG. 10-974 SHEET 1 OF 2)



**VIEW #4**  
LOOKING UP AT HEADER



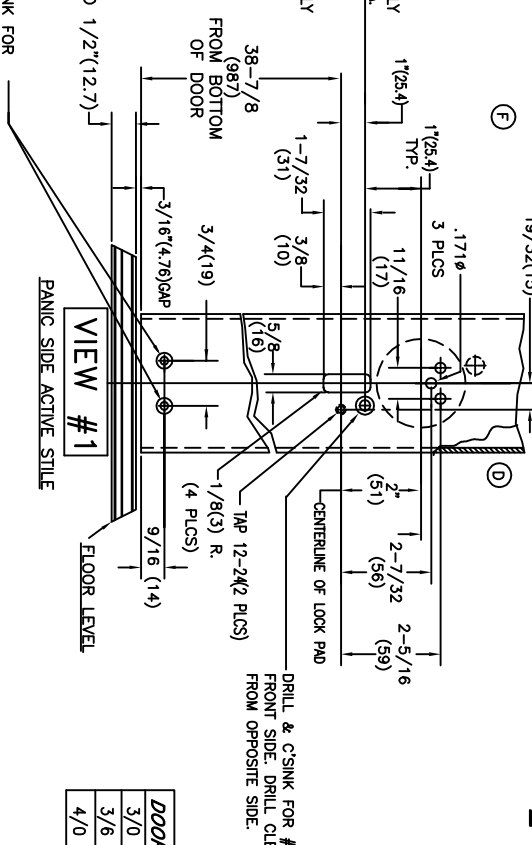
**VIEW #3**  
LOOKING DOWN ON THRESHOLD



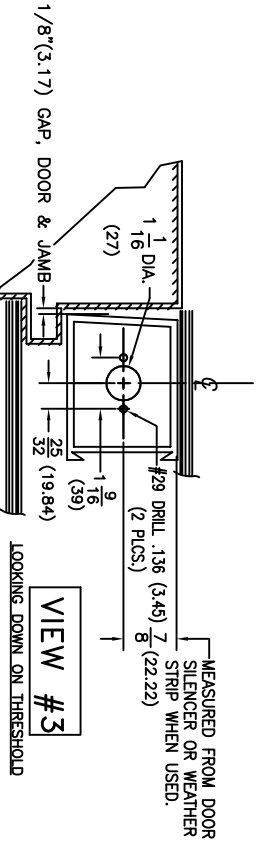
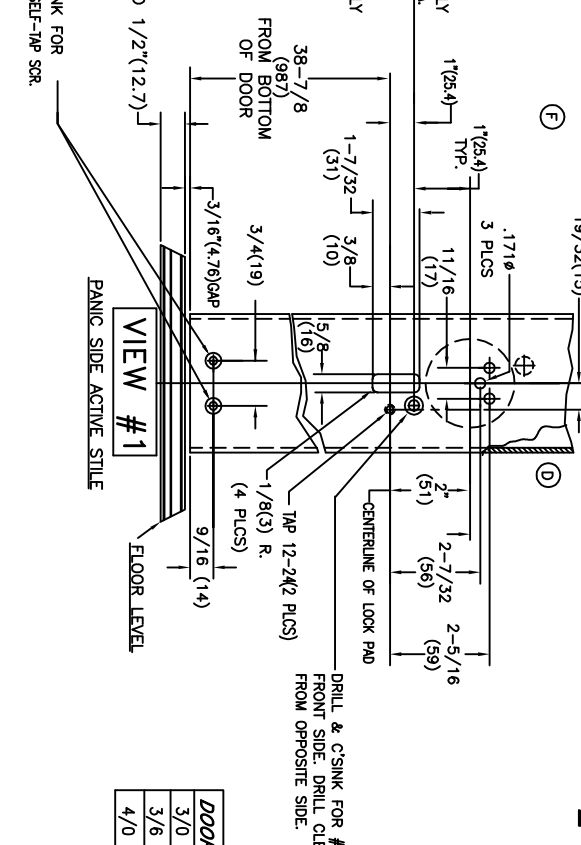
**VIEW #1**  
PANIC SIDE ACTIVE STILE

DOOR	"L"
3/0	32-29/32(836)
3/6	38-29/32(988)
4/0	44-29/32(1141)

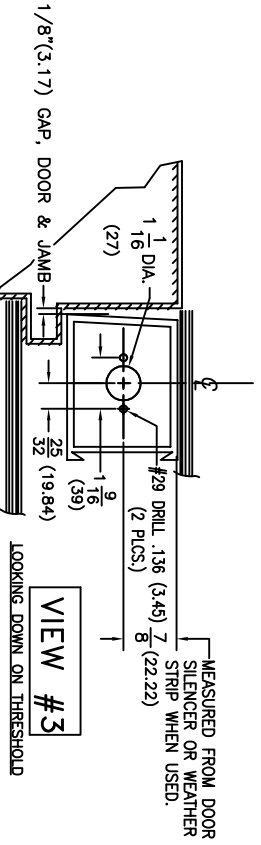
**VIEW #2**  
HINGE SIDE VERTICAL STILE  
PANIC SIDE



**VIEW #5**  
OUTSIDE (LOOK SIDE) OF ACTIVE DOOR STYLE SHOWING PREP. WHEN USING #86 LOCK CYLINDER MOUNTING PAD.



**VIEW #3**  
LOOKING DOWN ON THRESHOLD

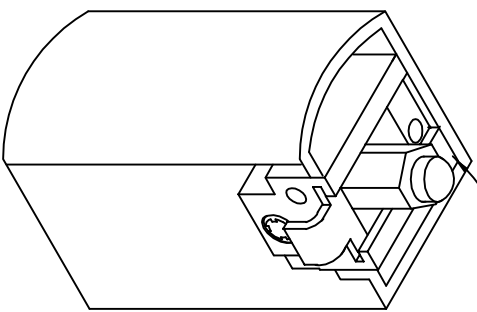


**VIEW #4**  
LOOKING UP AT HEADER

FILE NO.	10-974-2	FINISH	
NEXT ASSY.	1285C-KITS	HEAT TREAT	
GR. USED			
G 2.17/09	REMOVE VIEW/DETAIL SHOWING SPACER "S"	ECON2065	RM
F 3.8/04	ADD INTION SPACER	DETAIL "S"	ECON1753
E 12/06/01	REF. SHEET 1 OF 2		ECON1535
D 11/08/01	MODIFY ACTIVE STILE PREP		ECON1485
C 07/18/00	REF. SHIT 1062		ECON1396
DIMENSIONAL TOLERANCES UNLESS OTHERWISE SPECIFIED			
DECIMAL DIMENSIONS	XX ± .005	CHAMFER	APPROXIMATE
ANGULAR	± .1/64	FRACTIONAL	± 1/64
SCALE	NONE	DATE	6/9/99
ROUTING INSTRUCTIONS		SHEET 2 OF 2 SHEETS	
1285C CVR PANIC DEVICE		DWG. NO. 10-974-2	
		TEXT	

MODEL  
1285C  
LHRB (SHOWN)

TOP BOLT GUIDE ASSY



## ADJUSTMENT INSTRUCTIONS.

**B** PLACE ADJUSTMENT WRENCH ONTO BOLT. TURN WRENCH CLOCKWISE TO RETRACT BOLT—COUNTERCLOCKWISE TO EXTEND BOLT.

USAGE: 1085,2085,2086,

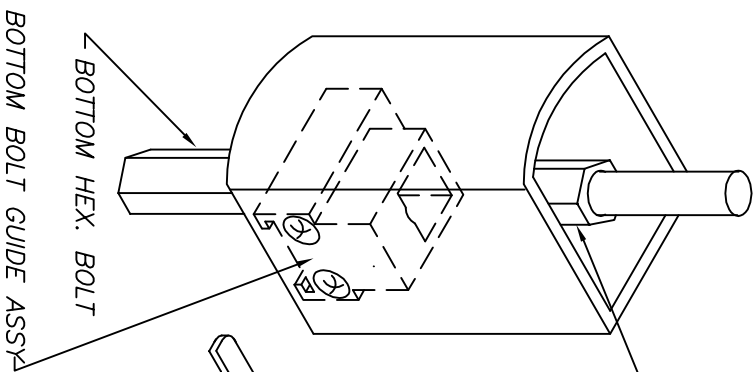
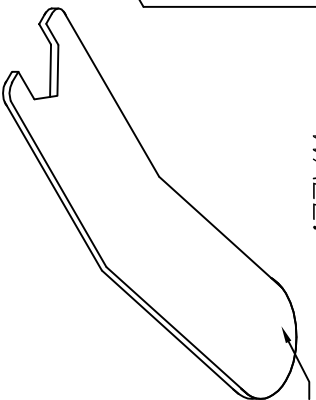
△ 3185B&3186,1285,1206

NOTE:

TOP BOLT GUIDE ASSY USED WITH THE FOLLOWING:

1085,1285,1206,2086 & 3186

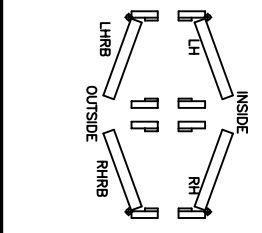
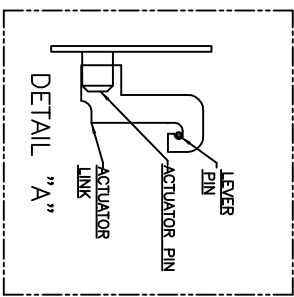
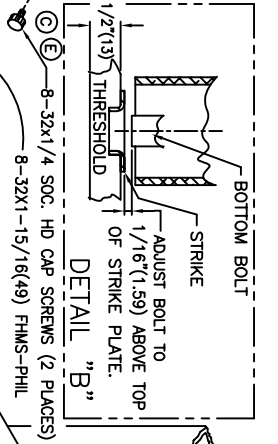
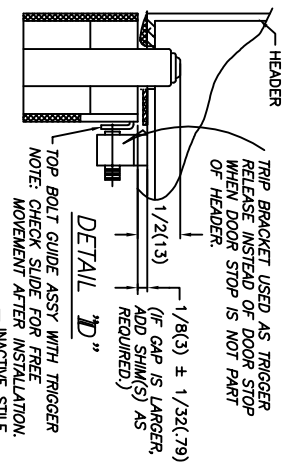
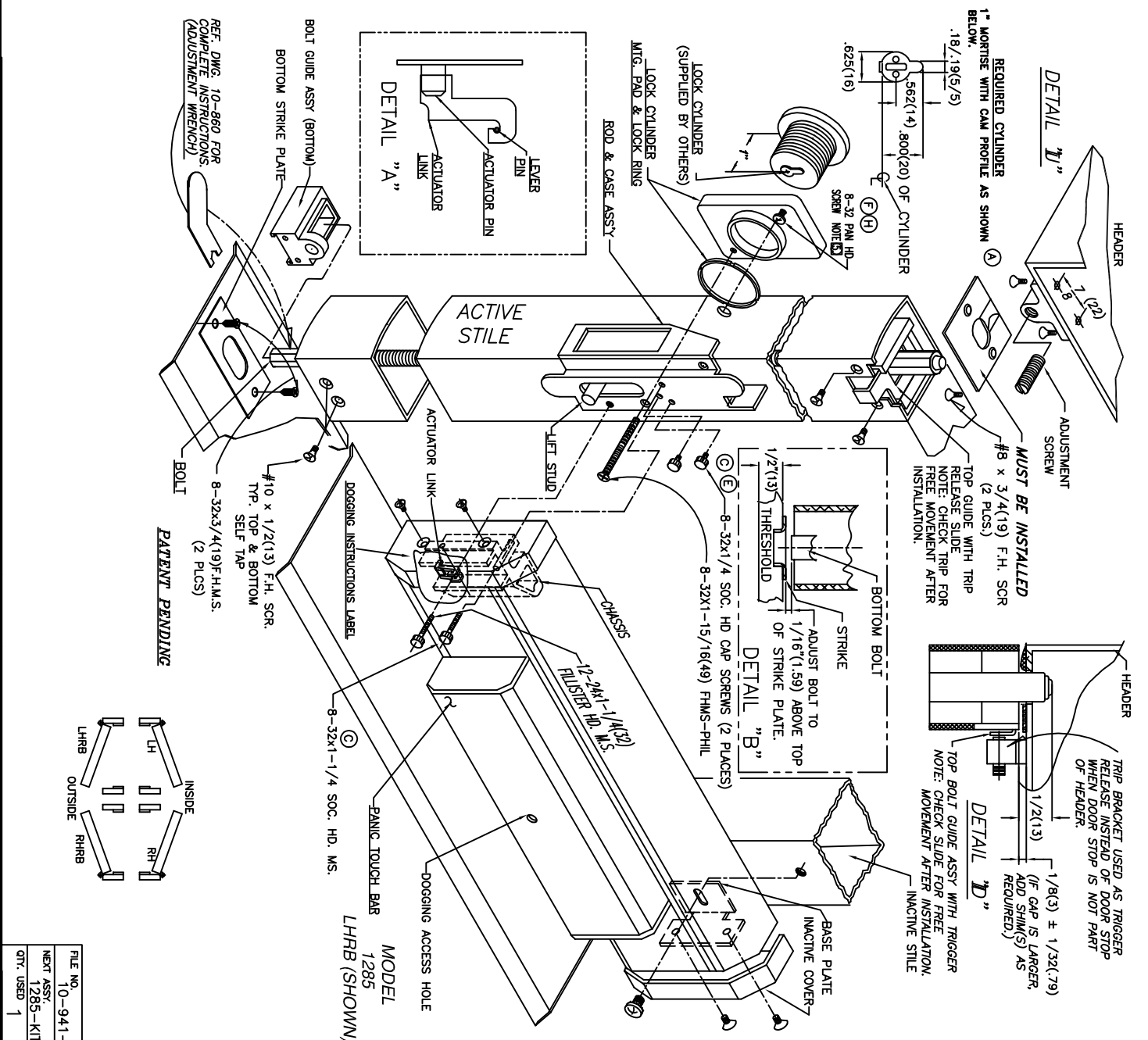
NOTE:  
UPON FINAL ADJUSTMENT, ASSURE THAT FLAT ON HEX. BOLT RUNS PARALLEL TO FACE OF STYLE WALL.



FILE NO.	FINISH	HEAT TREAT	ADJUSTMENT INSTRUCTIONS	TOP & BTM BOLT GUIDE ASSY	10-860	D
NEXT ASSY.						
QTY. USED	1					
D 11/05/05	UPDATE MODEL USAGE: ADJ 1285		ECN11116	RM	ECN1973	RM
C 11/3/97	REVISE ADJ. INSTRUCTIONS					
B 1/5/95	REVISE ADJ. INSTRUCTIONS					
DIMENSIONAL TOLERANCES UNLESS OTHERWISE SPECIFIED		APPROVALS	DATE			
DECIMAL DIMENSIONS .XX	± .010	CHECKED				
DECIMAL DIMENSIONS .XXX	± .005	DRAWN	R.M. 11/4/95			
ANGULAR ± °	FRACTIONAL ± 1/64	SCALE	NONE			
MATERIAL						
3447 UNION PACIFIC AVE. LOS ANGELES, CALIF. 90023		SHEET 1 OF 1 SHEETS				
DWG. NO.		REV.				

### MOUNTING INSTRUCTIONS:

1. PREPARE ACTIVE STILE INSIDE FACE PER SHF. 2 OF 2, OR USE TEMPLATE 10-942
2. INSTALL ROD & CASE ASSY. INTO ACTIVE STILE. SECURE WITH 2 EA. 8-32x1/4 SOC. HD. CAP SCREWS.
3. INSTALL TOP & BOTTOM STRIKES WITH 2 EA. #8x3/4(19) SELF-TAP SCREWS.
4. IF TRIM OR CYLINDER ARE NOT BEING USED, SKIP NOTE 5.
5. AS PER LOCK PAD VIEW SHOWN, INSTALL ONE 8-32 PAN HD. SCREW PARTIALLY TO SUIT NOMINAL WALL THICKNESS OF 1/8" OR 3/16". INSTALL PAD ASSY. AND ROTATE CLOCKWISE UNTIL IT LOCKS INTO POSITION, NOW INSTALL SINGLE 8-32 x 1-15/16" SCREW & TIGHTEN.  
NOTE: USE 8-32x5/16 PAN HD. ON 1/8" WALL THICKNESS. USE 8-32x5/8 PAN HD. ON 3/16" WALL THICKNESS.  
IF TRIM IS BEING USED, FOLLOW INSTALLATION GUIDE NO. 10-990 (WITH TRIM).
6. UNDUG PANIC DEVICE PER DOGGING INSTRUCTION LABEL ON ACTIVE COVER.
7. PANIC ATTACHMENT:
  - REMOVE FRONT AND REAR END BASE COVERS BY RELEASING 8-32x3/16(5) FLAT HD. SCREWS. SECURE ACTIVE END OF PANIC BY INSTALLING ONE 12-24x1-1/4(32) FILLISTER HD. SCREW THROUGH CHASSIS AND ONE 8-32x1-1/4 SOC. HD. MS. SECURE INACTIVE END WITH SINGLE 1/4-20x1/2(13) ROUND HD. MS. (PHIL.) WITH SENS THROUGH INACTIVE BASE PLATE. PROCEED BY RE-INSTALLING BASE COVERS ON EACH END OF PANIC BASE.
  8. ADJUST TOP & BOTTOM BOLTS ALLOWING FOR 1/2(13) OF BOLT TO EXTEND FROM VERTICAL STILE (REF. DETAIL "J"). INSTALL BOLT GUIDES TOP & BOTTOM WITH (2) EACH #10x1/2(13) FL. HD. SELF-TAPPING SCREWS. (SEE DWG. 10-860)
  9. DEPRESS PUSH BAR. TOP BOLT SHOULD LOCK IN THE RETRACTED (UNLOCKED) POSITION. IF LOCKING DOES NOT OCCUR READJUST BOLTS W/HALF TURN INCREASING UNTIL LOCKING OCCURS. VERIFY OPERATION BY FULLY DEPRESSING TOUCH BAR TO ACHIEVE DOGGING OR FULL RETRACTION OF BOLTS.
8. TOP BOLT ADJUSTMENT:
  1. RELEASE TOP AND BOTTOM BOLTS BY DEPRESSING TRIGGER ON TOP BOLT GUIDE ASSEMBLY.
  2. POSITION TOP BOLT 1/2(13) FROM TOP EDGE OF ACTIVE STILE.
  3. BOTTOM BOLT ADJUSTMENT:
    1. FULLY DEPRESS PUSH BAR, RETRACTING TOP AND BOTTOM ROOBS. ADJUST BOTTOM BOLT PER DETAIL "g".
  - MANUAL CHECK:
    1. WITH TOP AND BOTTOM BOLTS FULLY RETRACTED, DEPRESS TRIGGER RELEASE. ROOBS WILL THEN EXTEND TO THE LOCKED POSITION.
    2. INSTALL TRIP BRACKET (REF. DETAIL "J") AND ADJUST SET SCREW SO THAT WHEN DOOR CLOSÉS, TOP BOLT GUIDE TRIGGER CONTACTS SET SCREW AND ALLOWS BOLTS TO EXTEND.
  - DOGGING INSTRUCTIONS:
    - TO DOG- INSERT HEX KEY TURN CLOCKWISE UNTIL IT STOPS, FULLY DEPRESS TOUCH BAR, THEN RELEASE.
    - TO UNDOG- INSERT HEX KEY TURN CLOCKWISE UNTIL IT STOPS, TOUCH BAR WILL RELEASE.



FILE NO.	10-941-1	APPROVALS	DATE
NEXT ASSY.	1285-KITS	CHECKED	
QTY. USED	1	DRAWN	5/29/99
FINISH	NONE	SCALE	NONE
HEAT TREAT			

MODEL	1285
LH RB (SHOWN)	
RH RB (SHOWN)	
LH RB	
RH RB	

L 21309	REMOVE ALL REF. FOR S* SPACER	EQ2085	RM
K 52605	REF. PAGE 2 OF 2	EN1841	RM
DIMENSIONAL TOLERANCES UNLESS OTHERWISE SPECIFIED			
DECIMAL DIMENSIONS	XX ± .010		
ANGULAR DIMENSIONS	XXX ± .005		
ANGULAR ± 9°	FRACTIONAL ± 1/64		
MATERIAL			
FINISH NONE			
HEAT TREAT			

**Jackson CORPORATION**  
 3447 LINDSEY PARKWAY  
 LOS ANGELES, CALIF. 90023

INSTALLATION GUIDE  
 1285 CVR PANIC DEVICE  
 10-941-1



NOTE: (X) THIS PRODUCT IS DESIGNED AND MFRG. TO MEET CLASSIFICATION NO. 37601321B, EN1125 STANDARD.

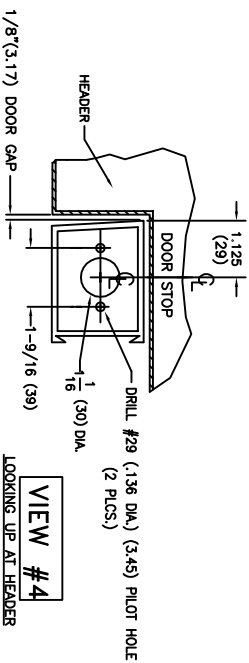
(X) THE SAFETY FEATURES OF THIS PRODUCT ARE ESSENTIAL TO IT'S COMPLIANCE WITH EN 1125. NO MODIFICATION OF ANY KIND, OTHER THAN THOSE DESCRIBED IN THESE INSTRUCTIONS, ARE PERMITTED.

(X) RECOMMENDATIONS FOR MAINTENANCE:

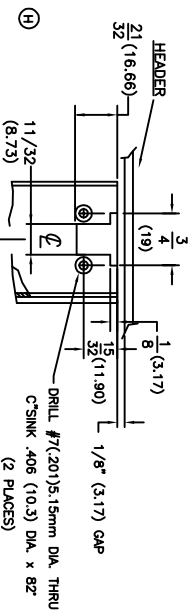
IT IS RECOMMENDED THAT THE FOLLOWING ROUTINE MAINTENANCE CHECKS SHOULD BE TAKEN AT INTERVALS OF NOT MORE THAN ONE MONTH BY THE OCCUPIER OR HIS APPROVED REPRESENTATIVE:

A) INSPECT AND OPERATE THE PANIC DEVICE TO ENSURE THAT ALL COMPONENTS ARE IN A SATISFACTORY WORKING CONDITION.

B) ENSURE THAT THE KEEPER(S) IS (ARE) FREE FROM OBSTRUCTION.



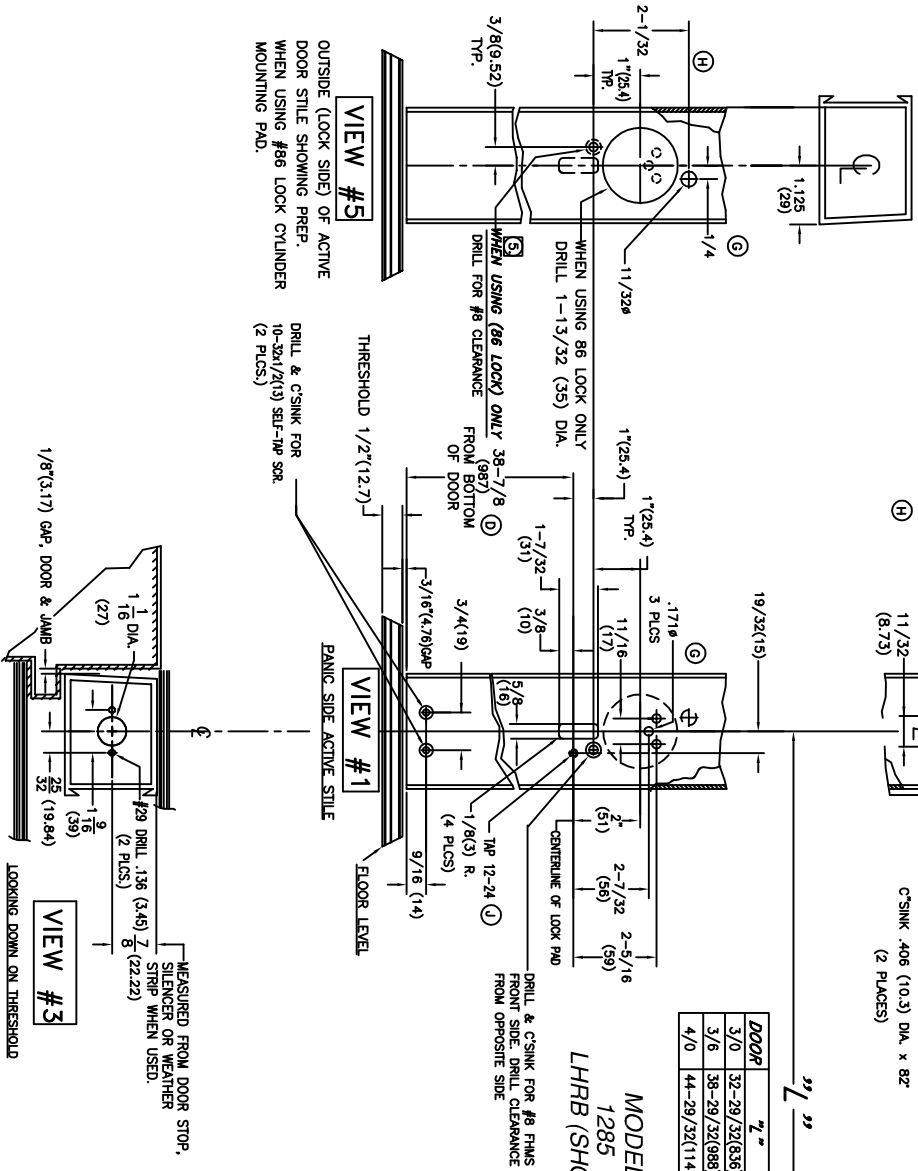
VIEW #4  
LOOKING UP AT HEADER



VIEW #3  
LOOKING DOWN ON THRESHOLD

DOOR	Z"
3/0	32-29/32(836)
3/6	36-29/32(988)
4/0	44-29/32(1141)

MODEL 1285  
LHRB (SHOWN)



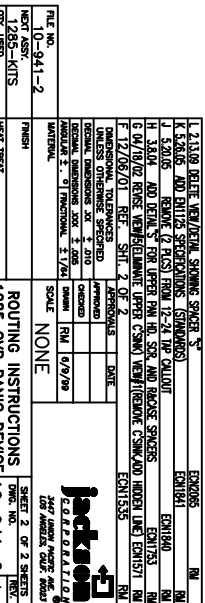
VIEW #1  
HINGE SIDE VERTICAL STILE

FILE NO.	10-941-2	FINISH	HEAT TREAT
HEAT ASST.	1285-KITS		
QTY. USED			
1. LUBRICATE VERTICAL SPRING SPACER 3			
2. SPRING AND DRILL OF KEYS, SPRING AND LATCH			
3. LATCH AND DRILL OF KEYS, SPRING AND LATCH			
4. SPRING AND DRILL OF KEYS, SPRING AND LATCH			
5. DRILL AND REPAIR VERTICAL SPRING SPACER FROM TOP AND BOTTOM SPACERS			
6. DRILL AND REPAIR VERTICAL SPRING SPACER FROM TOP AND BOTTOM SPACERS			
F. 12/05/01 REF. SHEET 2 OF 2			
APPROVED	DATE		
DESIGNED	APPROVED		
CHECKED	DATE		
SCALE	SCALE		
FINISH	FINISH		
HEAT TREAT	HEAT TREAT		

ROUTING INSTRUCTIONS  
1285 CVR PANIC DEVICE

10-941-2 L

- ROUTING INSTRUCTIONS:**
- PREPARE INSIDE FACE (PANIC SIDE) OF ACTIVE STILE PER VIEW #1 & TEMPLATE 10-942.
  - PREPARE INSIDE FACE (PANIC SIDE) OF HINGE STILE PER VIEW #2 & TABLE "A".
  - PREPARE THRESHOLD PER VIEW #3.
  - PREPARE HEADER PER VIEW #4.
  - IF CYLINDER OR TRIM IS BEING USED, SEE DRILL TEMPLATE NO. 10-956 OR 10-987 WITH TRIM AS APPROPRIATE.
  - FOR MOUNTING AND ADJUSTMENTS OF THE 1285 SEE OPPOSITE SIDE THIS PAGE.  
(DWG. 10-941 SHEET 1 OF 2)



VIEW #2  
HINGE SIDE VERTICAL STILE