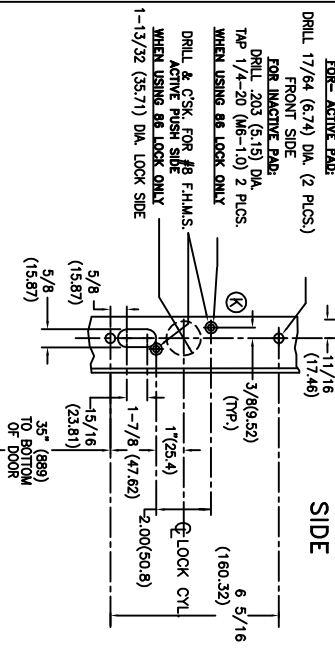
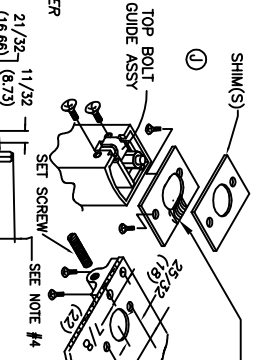
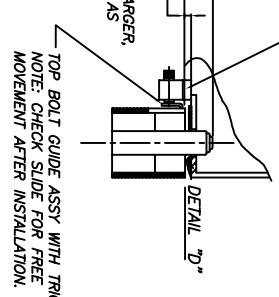


DRILLING & ROUTING FOR ACTIVE SIDE



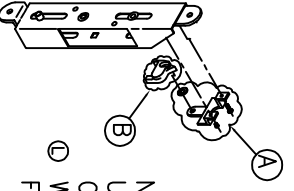
TRIP BRACKET USED AS TRIGGER RELEASE INSTEAD OF DOOR STOP WHEN DOOR STOP IS NOT PART OF HEADER.



STRIKE TO BE INSTALLED WITH RAISED PORTION POSITIONED TOWARDS THE OUTSIDE. (NOTE: STRIKE MUST BE INSTALLED PER DETAIL "D")

MOUNTING INSTRUCTIONS

1. DETERMINE HAND OF DOOR, THEN PREPARE STILE PER TEMPLATE: 10-474 (DRILL TEMPLATE) FOR ACTIVE STILE.
2. IF LOCK IS TO BE USED, PREPARE ACTIVE STILE PER TEMPLATE 10-478.
3. INSTALL ROD & CASE ASSY INTO ACTIVE STILE AND SECURE WITH TWO 1/4-20 (UNF-1.0) SHOULDER STUDS (IF USING LOCK, PERFORM INST. 5 & 6 NEXT).
4. PLACE ACTIVE PAD OF STILE MAKING CERTAIN THAT ACTUATOR LINK IS PROPERLY ENGAGED (UNDERSIDE OF PIN) TO MECHANISM AND SECURE PAD. ADJUST BOLTS BY SCREWING IN OR OUT TILL TOP OF BOLT IS FLUSH WITH EDGE OF DOOR, WHEN THE PUSH BAR IS FULLY DEPRESSED, THEN INSTALL BOLT GUIDES WITH SIX #10 x 1/2 F.H. SELF TAPPING SCREWS.
5. INSERT LOCK CYLINDER INTO LOCK MOUNTING PAD AND SECURE WITH LOCK RING PROVIDED. MAKE SURE CYLINDER AND LOCK MOUNTING PAD ARE INSTALLED AS SHOWN. SECURE LOCK PAD WITH 2 EA 8-32 x 1-15/16 F.H.S.



1. START BY REMOVING BRACKET (A),
2. NEXT REMOVE DOGGING PAWL (B),
3. FINALIZE BY RE-ATTACHING BRACKET (A).

RECOMMENDATIONS FOR MAINTENANCE:

IT IS RECOMMENDED THAT THE FOLLOWING ROUTINE MAINTENANCE CHECKS SHOULD BE TAKEN AT INTERVALS OF NOT MORE THAN ONE MONTH BY THE OCCUPYER OR HIS APPROVED REPRESENTATIVE:

- A) INSPECT AND OPERATE THE PANIC DEVICE TO ENSURE THAT ALL COMPONENTS ARE IN A SATISFACTORY WORKING CONDITION;
- B) ENSURE THAT THE KEYPERS(S) IS (ARE) FREE FROM OBSTRUCTION.

THE SAFETY FEATURES OF THIS PRODUCT ARE ESSENTIAL TO ITS COMPLIANCE WITH EN 179. NO MODIFICATION OF ANY KIND, OTHER THAN THOSE DESCRIBED IN THESE INSTRUCTIONS, ARE PERMITTED.

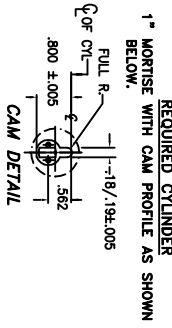
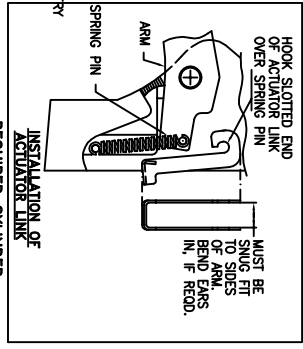
DOGGING OF DEVICE WITH CYLINDER KEY
TO DOG DEVICE INSERT KEY, FULLY DEPRESS PUSH PAD, HOLD DOWN & TURN KEY CLOCKWISE TO APPROX. TWO O' CLOCK. RETURN KEY TO CENTER FOR REMOVAL.
TO UNDOG TURN KEY COUNTERCLOCKWISE.
DOGGING DEVICE WITH DOGGING PIN
PUSH PUSH PAD DOWN AND HOLD. PUSH DOGGING PIN UP WITH SCREW DRIVER AND TURN 90° TO 180° EITHER DIRECTION, UNTIL DOGGING PIN RELEASES.

NOTE: THIS PRODUCT IS DESIGNED AND MFGG. TO MEET CLASSIFICATION NO. 37801321B, (K)
EN179 STANDARDS.

PATENT NO. 3,933,335



SEE NOTE #4



NOTE: NON-HANDED DEVICE
R.L.R.B. INSTALLATION SHOWN
L.H.R.B. OPPOSITE
DEVICE IS CONVERTED BY SWITCHING ACTUATOR LINK TO OTHER PAD. SEE ABOVE INSTRUCTIONS.

LH/RH/RB SHOWN

FILE NO.	10-01-05	ADD NOTATION: WHEN NOT USING MORTISE CYLINDER	EN1853
REV. NO.	1	ADD NOTATION: WHEN NOT USING MORTISE CYLINDER	EN1853
REV. NO.	2	ADD NOTATION: WHEN NOT USING MORTISE CYLINDER	EN1853
REV. NO.	3	ADD NOTATION: WHEN NOT USING MORTISE CYLINDER	EN1853
REV. NO.	4	ADD NOTATION: WHEN NOT USING MORTISE CYLINDER	EN1853
REV. NO.	5	ADD NOTATION: WHEN NOT USING MORTISE CYLINDER	EN1853
REV. NO.	6	ADD NOTATION: WHEN NOT USING MORTISE CYLINDER	EN1853
REV. NO.	7	ADD NOTATION: WHEN NOT USING MORTISE CYLINDER	EN1853
REV. NO.	8	ADD NOTATION: WHEN NOT USING MORTISE CYLINDER	EN1853
REV. NO.	9	ADD NOTATION: WHEN NOT USING MORTISE CYLINDER	EN1853
REV. NO.	10	ADD NOTATION: WHEN NOT USING MORTISE CYLINDER	EN1853
REV. NO.	11	ADD NOTATION: WHEN NOT USING MORTISE CYLINDER	EN1853
REV. NO.	12	ADD NOTATION: WHEN NOT USING MORTISE CYLINDER	EN1853
REV. NO.	13	ADD NOTATION: WHEN NOT USING MORTISE CYLINDER	EN1853
REV. NO.	14	ADD NOTATION: WHEN NOT USING MORTISE CYLINDER	EN1853
REV. NO.	15	ADD NOTATION: WHEN NOT USING MORTISE CYLINDER	EN1853
REV. NO.	16	ADD NOTATION: WHEN NOT USING MORTISE CYLINDER	EN1853
REV. NO.	17	ADD NOTATION: WHEN NOT USING MORTISE CYLINDER	EN1853
REV. NO.	18	ADD NOTATION: WHEN NOT USING MORTISE CYLINDER	EN1853
REV. NO.	19	ADD NOTATION: WHEN NOT USING MORTISE CYLINDER	EN1853
REV. NO.	20	ADD NOTATION: WHEN NOT USING MORTISE CYLINDER	EN1853
REV. NO.	21	ADD NOTATION: WHEN NOT USING MORTISE CYLINDER	EN1853
REV. NO.	22	ADD NOTATION: WHEN NOT USING MORTISE CYLINDER	EN1853
REV. NO.	23	ADD NOTATION: WHEN NOT USING MORTISE CYLINDER	EN1853
REV. NO.	24	ADD NOTATION: WHEN NOT USING MORTISE CYLINDER	EN1853
REV. NO.	25	ADD NOTATION: WHEN NOT USING MORTISE CYLINDER	EN1853
REV. NO.	26	ADD NOTATION: WHEN NOT USING MORTISE CYLINDER	EN1853
REV. NO.	27	ADD NOTATION: WHEN NOT USING MORTISE CYLINDER	EN1853
REV. NO.	28	ADD NOTATION: WHEN NOT USING MORTISE CYLINDER	EN1853
REV. NO.	29	ADD NOTATION: WHEN NOT USING MORTISE CYLINDER	EN1853
REV. NO.	30	ADD NOTATION: WHEN NOT USING MORTISE CYLINDER	EN1853
REV. NO.	31	ADD NOTATION: WHEN NOT USING MORTISE CYLINDER	EN1853
REV. NO.	32	ADD NOTATION: WHEN NOT USING MORTISE CYLINDER	EN1853
REV. NO.	33	ADD NOTATION: WHEN NOT USING MORTISE CYLINDER	EN1853
REV. NO.	34	ADD NOTATION: WHEN NOT USING MORTISE CYLINDER	EN1853
REV. NO.	35	ADD NOTATION: WHEN NOT USING MORTISE CYLINDER	EN1853
REV. NO.	36	ADD NOTATION: WHEN NOT USING MORTISE CYLINDER	EN1853
REV. NO.	37	ADD NOTATION: WHEN NOT USING MORTISE CYLINDER	EN1853
REV. NO.	38	ADD NOTATION: WHEN NOT USING MORTISE CYLINDER	EN1853
REV. NO.	39	ADD NOTATION: WHEN NOT USING MORTISE CYLINDER	EN1853
REV. NO.	40	ADD NOTATION: WHEN NOT USING MORTISE CYLINDER	EN1853
REV. NO.	41	ADD NOTATION: WHEN NOT USING MORTISE CYLINDER	EN1853
REV. NO.	42	ADD NOTATION: WHEN NOT USING MORTISE CYLINDER	EN1853
REV. NO.	43	ADD NOTATION: WHEN NOT USING MORTISE CYLINDER	EN1853
REV. NO.	44	ADD NOTATION: WHEN NOT USING MORTISE CYLINDER	EN1853
REV. NO.	45	ADD NOTATION: WHEN NOT USING MORTISE CYLINDER	EN1853
REV. NO.	46	ADD NOTATION: WHEN NOT USING MORTISE CYLINDER	EN1853
REV. NO.	47	ADD NOTATION: WHEN NOT USING MORTISE CYLINDER	EN1853
REV. NO.	48	ADD NOTATION: WHEN NOT USING MORTISE CYLINDER	EN1853
REV. NO.	49	ADD NOTATION: WHEN NOT USING MORTISE CYLINDER	EN1853
REV. NO.	50	ADD NOTATION: WHEN NOT USING MORTISE CYLINDER	EN1853
REV. NO.	51	ADD NOTATION: WHEN NOT USING MORTISE CYLINDER	EN1853
REV. NO.	52	ADD NOTATION: WHEN NOT USING MORTISE CYLINDER	EN1853
REV. NO.	53	ADD NOTATION: WHEN NOT USING MORTISE CYLINDER	EN1853
REV. NO.	54	ADD NOTATION: WHEN NOT USING MORTISE CYLINDER	EN1853
REV. NO.	55	ADD NOTATION: WHEN NOT USING MORTISE CYLINDER	EN1853
REV. NO.	56	ADD NOTATION: WHEN NOT USING MORTISE CYLINDER	EN1853
REV. NO.	57	ADD NOTATION: WHEN NOT USING MORTISE CYLINDER	EN1853
REV. NO.	58	ADD NOTATION: WHEN NOT USING MORTISE CYLINDER	EN1853
REV. NO.	59	ADD NOTATION: WHEN NOT USING MORTISE CYLINDER	EN1853
REV. NO.	60	ADD NOTATION: WHEN NOT USING MORTISE CYLINDER	EN1853
REV. NO.	61	ADD NOTATION: WHEN NOT USING MORTISE CYLINDER	EN1853
REV. NO.	62	ADD NOTATION: WHEN NOT USING MORTISE CYLINDER	EN1853
REV. NO.	63	ADD NOTATION: WHEN NOT USING MORTISE CYLINDER	EN1853
REV. NO.	64	ADD NOTATION: WHEN NOT USING MORTISE CYLINDER	EN1853
REV. NO.	65	ADD NOTATION: WHEN NOT USING MORTISE CYLINDER	EN1853
REV. NO.	66	ADD NOTATION: WHEN NOT USING MORTISE CYLINDER	EN1853
REV. NO.	67	ADD NOTATION: WHEN NOT USING MORTISE CYLINDER	EN1853
REV. NO.	68	ADD NOTATION: WHEN NOT USING MORTISE CYLINDER	EN1853
REV. NO.	69	ADD NOTATION: WHEN NOT USING MORTISE CYLINDER	EN1853
REV. NO.	70	ADD NOTATION: WHEN NOT USING MORTISE CYLINDER	EN1853
REV. NO.	71	ADD NOTATION: WHEN NOT USING MORTISE CYLINDER	EN1853
REV. NO.	72	ADD NOTATION: WHEN NOT USING MORTISE CYLINDER	EN1853
REV. NO.	73	ADD NOTATION: WHEN NOT USING MORTISE CYLINDER	EN1853
REV. NO.	74	ADD NOTATION: WHEN NOT USING MORTISE CYLINDER	EN1853
REV. NO.	75	ADD NOTATION: WHEN NOT USING MORTISE CYLINDER	EN1853
REV. NO.	76	ADD NOTATION: WHEN NOT USING MORTISE CYLINDER	EN1853
REV. NO.	77	ADD NOTATION: WHEN NOT USING MORTISE CYLINDER	EN1853
REV. NO.	78	ADD NOTATION: WHEN NOT USING MORTISE CYLINDER	EN1853
REV. NO.	79	ADD NOTATION: WHEN NOT USING MORTISE CYLINDER	EN1853
REV. NO.	80	ADD NOTATION: WHEN NOT USING MORTISE CYLINDER	EN1853
REV. NO.	81	ADD NOTATION: WHEN NOT USING MORTISE CYLINDER	EN1853
REV. NO.	82	ADD NOTATION: WHEN NOT USING MORTISE CYLINDER	EN1853
REV. NO.	83	ADD NOTATION: WHEN NOT USING MORTISE CYLINDER	EN1853
REV. NO.	84	ADD NOTATION: WHEN NOT USING MORTISE CYLINDER	EN1853
REV. NO.	85	ADD NOTATION: WHEN NOT USING MORTISE CYLINDER	EN1853
REV. NO.	86	ADD NOTATION: WHEN NOT USING MORTISE CYLINDER	EN1853
REV. NO.	87	ADD NOTATION: WHEN NOT USING MORTISE CYLINDER	EN1853
REV. NO.	88	ADD NOTATION: WHEN NOT USING MORTISE CYLINDER	EN1853
REV. NO.	89	ADD NOTATION: WHEN NOT USING MORTISE CYLINDER	EN1853
REV. NO.	90	ADD NOTATION: WHEN NOT USING MORTISE CYLINDER	EN1853
REV. NO.	91	ADD NOTATION: WHEN NOT USING MORTISE CYLINDER	EN1853
REV. NO.	92	ADD NOTATION: WHEN NOT USING MORTISE CYLINDER	EN1853
REV. NO.	93	ADD NOTATION: WHEN NOT USING MORTISE CYLINDER	EN1853
REV. NO.	94	ADD NOTATION: WHEN NOT USING MORTISE CYLINDER	EN1853
REV. NO.	95	ADD NOTATION: WHEN NOT USING MORTISE CYLINDER	EN1853
REV. NO.	96	ADD NOTATION: WHEN NOT USING MORTISE CYLINDER	EN1853
REV. NO.	97	ADD NOTATION: WHEN NOT USING MORTISE CYLINDER	EN1853
REV. NO.	98	ADD NOTATION: WHEN NOT USING MORTISE CYLINDER	EN1853
REV. NO.	99	ADD NOTATION: WHEN NOT USING MORTISE CYLINDER	EN1853
REV. NO.	100	ADD NOTATION: WHEN NOT USING MORTISE CYLINDER	EN1853

Jackson
CORPORATION
3447 JAMES MORGAN AVE.
LOS ANGELES, CALIF. 90008

INSTALLATION GUIDE
10B8P & 10B8PFx86
PANIC DEVICES
SHEET 1 OF 1 SHEETS
DWG. NO. 10-4831

