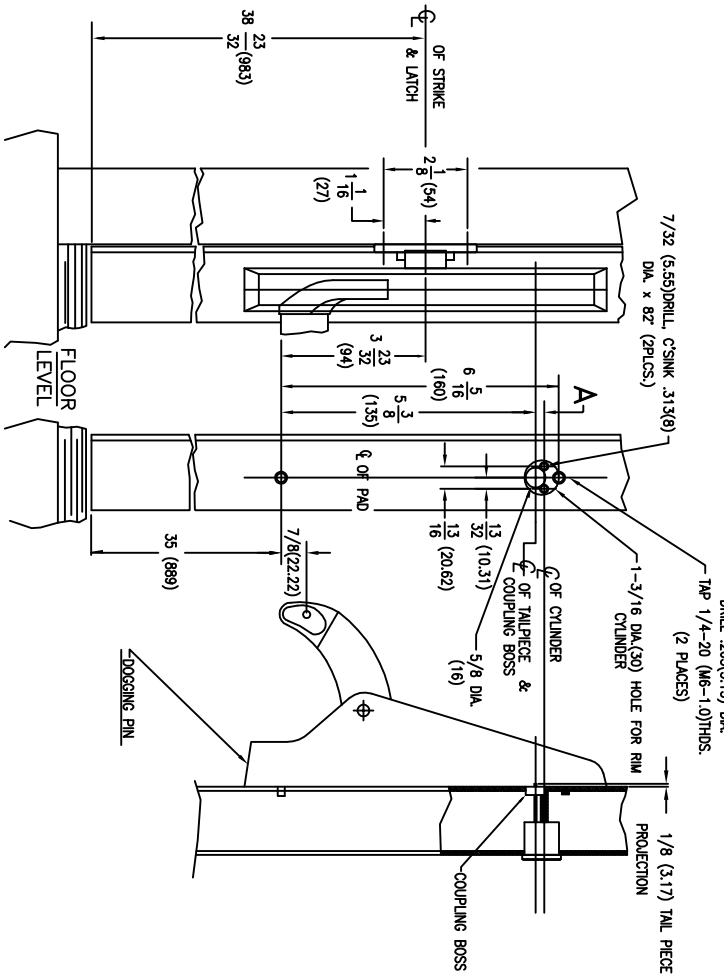
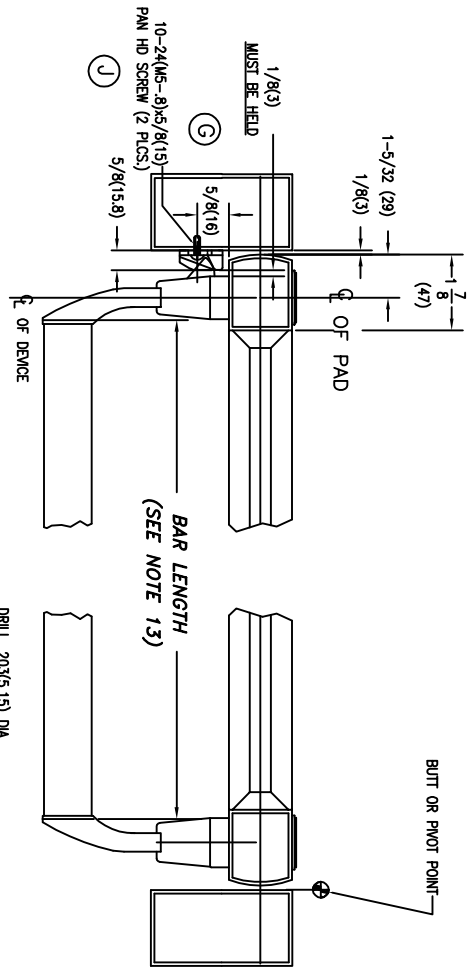






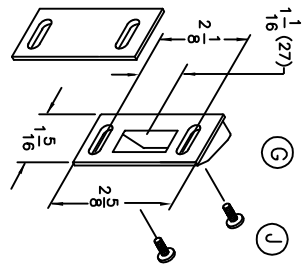
# MOUNTING INSTRUCTIONS



1. DETERMINE HAND OF DOOR AND ESTABLISH CENTER LINE OF PADS ON STILES.
2. PREPARE STILES PER TEMPLATES:  
10-484 TEMPLATE FOR ACTIVE STILE.  
10-475 TEMPLATE FOR INACTIVE STILE.
3. DRILL CYLINDER MOUNTING HOLES ONLY IF REQUIRED
4. LOCATE CENTER LINE OF CYLINDER ON EXTERIOR SIDE OF ACTIVE STILE AND DRILL IF REQUIRED.
5. TRIM TAIL PIECE TO FIT AS SHOWN.
6. MOUNT CYLINDER IN PLACE AND SECURE WITH MOUNTING SCREWS. (SCREWS MUST BE FLUSH WITH DOOR.)
7. DETERMINE FUNCTION KEY DESIRED:  
A.) REGULAR FUNCTION KEY REMOVABLE IN EITHER LOCKED OR UNLOCKED POSITION. FULLY RELEASE LATCH THEN SET INDEX MARK ON COUPLING BOSS STRAIGHT UP.  
B.) NIGHT LATCH FUNCTION: KEY REMOVABLE IN LOCKED POSITION ONLY. PREFORM STEP 'A,' THEN ROTATE COUPLING BOSS 90° TOWARDS HINGE SIDE.
8. DRILL .203 (5.15) DIA. AND TAP 1/4-20 THD (4 PLCS.) ON ACTIVE & INACTIVE STILES & INSTALL FOUR (4) 1/4-20(M6-1.0) SHOULDER STUDS. MOUNT ACTIVE PAD TO STILE WITH THREE 1/4-20(M6-1.0)x1/2(12.7) SOC. SET SCREWS.
9. LOCATE AND DRILL MOUNTING HOLES FOR ADJUSTABLE STRIKE. (CENTER ON LATCH)
10. MOUNT AND SECURE STRIKE AS SHOWN.
11. CHECK OPERATION TO ASSURE THAT ALL PARTS AND CYLINDER ARE FUNCTIONING PROPERLY. ADJUST AS REQUIRED.
12. MOUNT INACTIVE PAD TO STILE WITH THREE (3) 1/4-20 (M6-1.0)x 1/2(12.7) SOC. SET SCREWS.
13. CUT LENGTH OF PANIC BAR BY MEASURING FROM INSIDE TO INSIDE EDGE OF MOUNTING PADS. 1/32± (.79) FIT TO SIZE.
14. LOOSEN INACTIVE PAD. INSTALL AND SECURE PANIC BAR WITH TWO 1/4-20(M6-1.0) x 1(25.4) OVAL HD.M.S. (PHIL.) RETIGHTEN PAD SET SCREWS.

**H**

DOGGING INSTRUCTIONS:  
TO DOG- DEPRESS CROSS BAR TURN KEY TOWARD HINGE SIDE OR PUSH DOGGING PIN UP AND TURN 90° EITHER DIRECTION. TO UNDOG- DEPRESS CROSS BAR TURN KEY TOWARD LOCK SIDE OR ROTATE DOGGING PIN UNTIL IT RELEASES.



**"C" STRIKE**

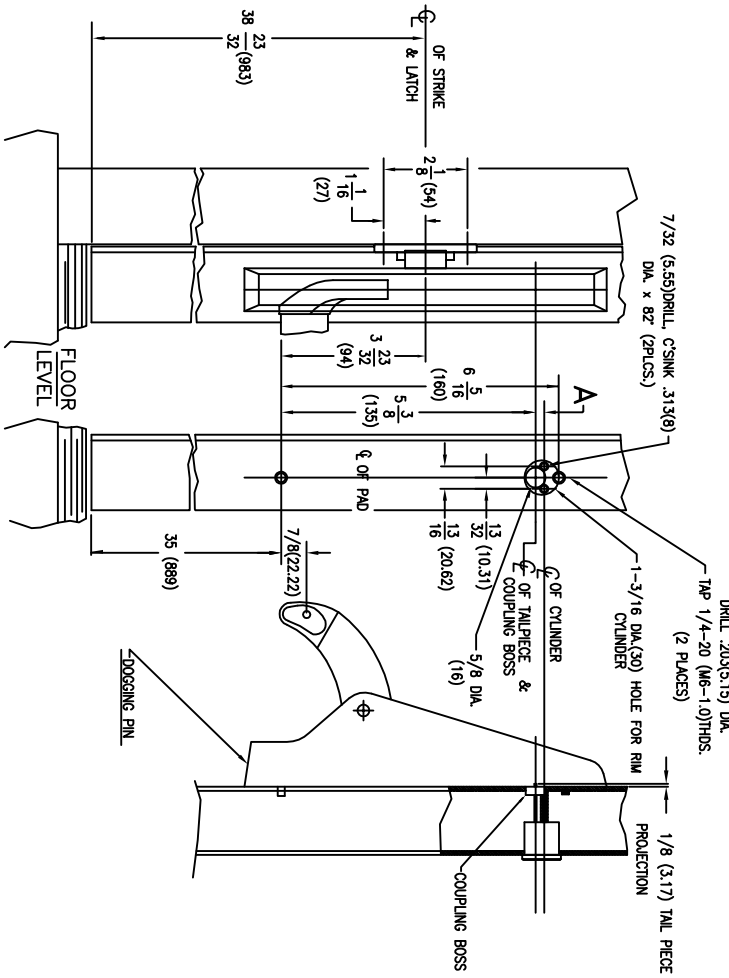
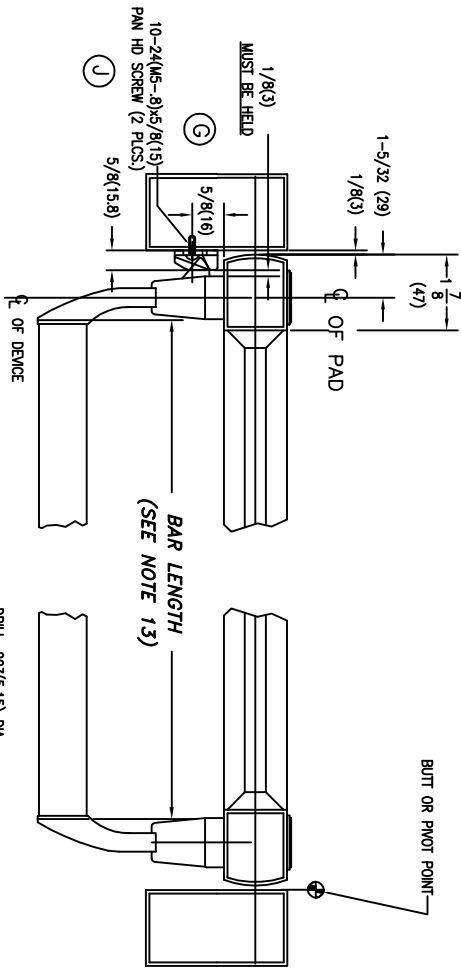
FUNCTIONAL CYLINDERS	DIM.
ILCO	1/4(6.35)
LOCKWOOD	
YALE	
CORBIN	
SCHLAGE	
RUSSWIN	
WELCH	
KELL	
SARGENT	

FILE NO.	NEXT ASSY	FINISH	INSTALLATION GUIDE	SHEET 1 OF 1 SHEETS
	1095-KITS		1095	10-481
	QTY. USED 1	HEAT TREAT	RIM PANIC DEVICE FOR OFFSET PIVOT OR BUTT HINGE	

J 1.28.08 PAN HEAD WAS OVAL	EON1999	RM
H 6.20.05 REVERSE DOGGING INSTRUCTIONS- HINGE WAS LOCK	EON1946	RM
G 6.26.03 INCORPORATE CENTERED "C" STRIKE	EON1825	RM
F 6/11/96 R E D R A W N	EON1143	RM
UNLESS OTHERWISE SPECIFIED		
ALL DIMENSIONS ARE IN INCHES	ALL DIMENSIONS ARE IN MILLIMETERS	
DECIMAL DIMENSIONS XX ± .010	DECIMAL DIMENSIONS XX ± .008	
ANGULAR DIMENSIONS ± .1/64	ANGULAR DIMENSIONS ± 1/64	
MATERIAL	SCALE	NONE
DATE	DATE	DATE
APPROVED	APPROVED	APPROVED
DESIGNED	DESIGNED	DESIGNED
DATE	DATE	DATE
6/29/97	6/29/97	6/29/97



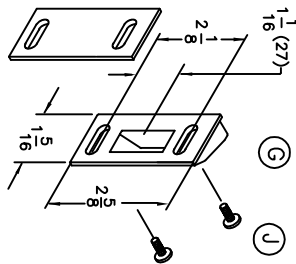
# MOUNTING INSTRUCTIONS



1. DETERMINE HAND OF DOOR AND ESTABLISH CENTER LINE OF PADS ON STILES.
2. PREPARE STILES PER TEMPLATES:  
10-484 TEMPLATE FOR ACTIVE STILE.  
10-475 TEMPLATE FOR INACTIVE STILE.
3. DRILL CYLINDER MOUNTING HOLES ONLY IF REQUIRED
4. LOCATE CENTER LINE OF CYLINDER ON EXTERIOR SIDE OF ACTIVE STILE AND DRILL IF REQUIRED.
5. TRIM TAIL PIECE TO FIT AS SHOWN.
6. MOUNT CYLINDER IN PLACE AND SECURE WITH MOUNTING SCREWS. (SCREWS MUST BE FLUSH WITH DOOR.)
7. DETERMINE FUNCTION KEY DESIRED:  
A.) REGULAR FUNCTION KEY REMOVABLE IN EITHER LOCKED OR UNLOCKED POSITION. FULLY RELEASE LATCH THEN SET INDEX MARK ON COUPLING BOSS STRAIGHT UP.  
B.) NIGHT LATCH FUNCTION: KEY REMOVABLE IN LOCKED POSITION ONLY. PREFORM STEP 'A,' THEN ROTATE COUPLING BOSS 90° TOWARDS HINGE SIDE.
8. DRILL .203 (5.15) DIA. AND TAP 1/4-20 THD (4 PLCS.) ON ACTIVE & INACTIVE STILES & INSTALL FOUR (4) 1/4-20(M6-1.0) SHOULDER STUDS. MOUNT ACTIVE PAD TO STILE WITH THREE 1/4-20(M6-1.0)x1/2(12.7) SOC. SET SCREWS.
9. LOCATE AND DRILL MOUNTING HOLES FOR ADJUSTABLE STRIKE. (CENTER ON LATCH)
10. MOUNT AND SECURE STRIKE AS SHOWN.
11. CHECK OPERATION TO ASSURE THAT ALL PARTS AND CYLINDER ARE FUNCTIONING PROPERLY. ADJUST AS REQUIRED.
12. MOUNT INACTIVE PAD TO STILE WITH THREE (3) 1/4-20 (M6-1.0)x 1/2(12.7) SOC. SET SCREWS.
13. CUT LENGTH OF PANIC BAR BY MEASURING FROM INSIDE TO INSIDE EDGE OF MOUNTING PADS. 1/32± (.79) FIT TO SIZE.
14. LOOSEN INACTIVE PAD. INSTALL AND SECURE PANIC BAR WITH TWO 1/4-20(M6-1.0) x 1(25.4) OVAL HD.M.S. (PHIL.) RETIGHTEN PAD SET SCREWS.

**H**

DOGGING INSTRUCTIONS:  
TO DOG- DEPRESS CROSS BAR TURN KEY TOWARD HINGE SIDE OR PUSH DOGGING PIN UP AND TURN 90° EITHER DIRECTION. TO UNDOG- DEPRESS CROSS BAR TURN KEY TOWARD LOCK SIDE OR ROTATE DOGGING PIN UNTIL IT RELEASES.

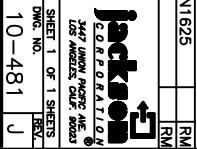


**"C" STRIKE**

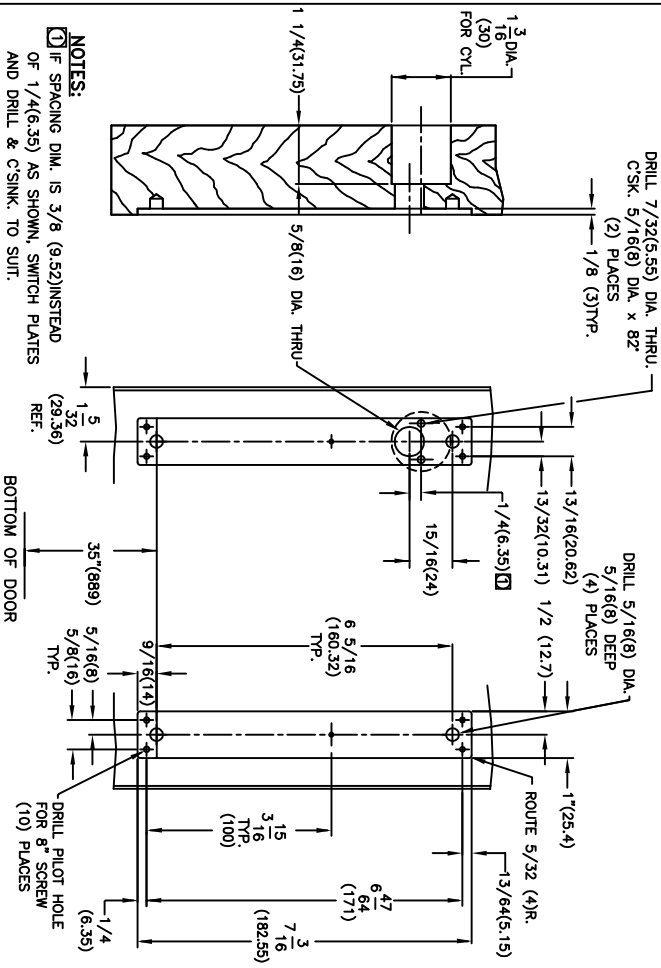
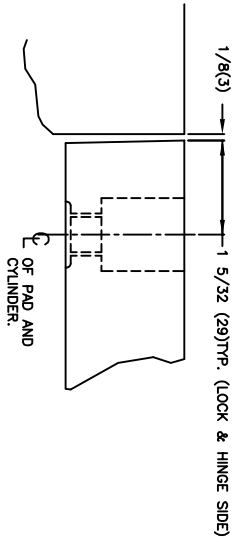
FUNCTIONAL CYLINDERS	DIM.
ILCO	1/4(6.35)
LOCKWOOD	
YALE	
CORBIN	
SCHLAGE	
RUSSWIN	
WELCH	
KELL	
SARGENT	

FILE NO.	NEXT ASSY.
	1095-KITS
	QTY. USED 1

J	1.28.08 PANIC HEAD WAS OVAL	EON1999	RM
H	6.20.05 REVERSE DOGGING INSTRUCTIONS- HINGE WAS LOCK	EON1946	RM
G	6.26.03 INCORPORATE CENTERED "C" STRIKE	EON1825	RM
F	6/11/96 R E D R A W I N G	EON1143	RM
E	UNLESS OTHERWISE SPECIFIED	ASSEMBLY	DATE
D	DECIMAL DIMENSIONS XX ± .010	PERMANENT	
C	ANGULAR DIMENSIONS XX ± .005	CREATED	
B	AUGULAR ± X OF FRACTIONAL ± 1/64	DRAWN	6/29/97
A	MATERIAL	SCALE	NONE
	FINISH	INSTALLATION GUIDE 1095	SHEET 1 OF 1 SHEETS
	HEAT TREAT	RIM PANIC DEVICE FOR OFFSET PIVOT OR BUTT HINGE	DWG. NO. 10-481
			REV.

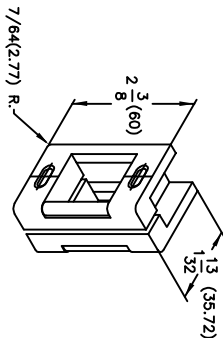




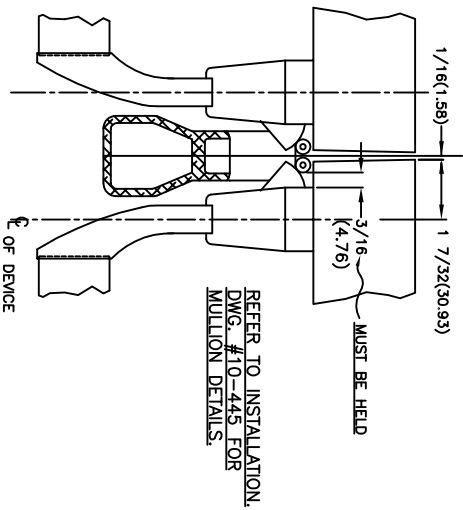


**NOTES:**  
 1 IF SPACING DIM. IS 3/8 (9.52) INSTEAD OF 1/4(6.35) AS SHOWN, SWITCH PLATES AND DRILL & CSINK. TO SUIT.

ACTIVE SIDE ROUTING FOR PLATE #30-886  
 INACTIVE SIDE ROUTING FOR PLATE #30-884  
 PACKAGE NO. 30-894  
**1095 WOOD APPLICATION**  
 ROUTING OF WOOD DOOR FOR SUPPORT PLATES



TYPE "P" ADJUSTABLE STRIKE



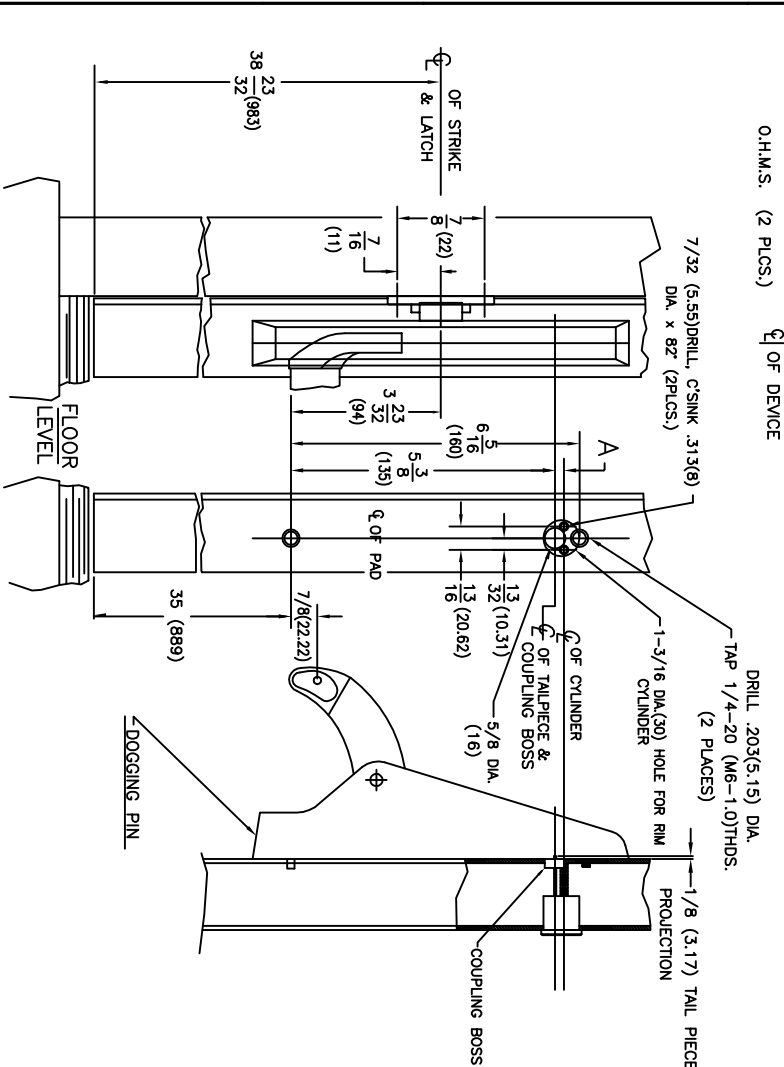
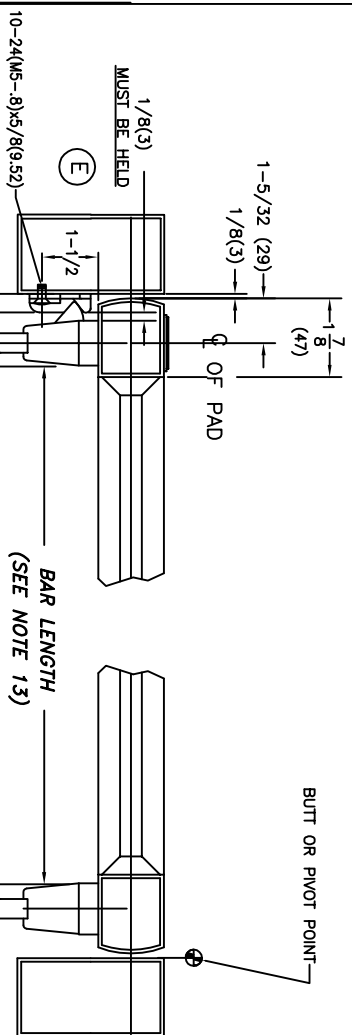
**L.H.R.B. SHOWN**  
**R.H.R.B. OPPOSITE**

FILE NO.	APPROVALS	DATE	ECN1143	RM
NEXT ASSY.	DIMENSIONAL TOLERANCES UNLESS OTHERWISE SPECIFIED			
QTY. USED 1	DECIMAL DIMENSIONS XXX ± .010	APPROVED		
	ANGULAR DIMENSIONS XXX ± .005	DRAWN	RM	17/7/97
	MATERIAL	SCALE	NONE	
	FINISH	1095 XWOOD APPLICATION		
	HEAT TREAT	SHEET 1 OF 1 SHEETS		
		DWG. NO. 10-482		
		F		

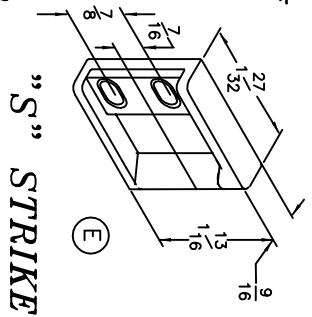




# MOUNTING INSTRUCTIONS



1. DETERMINE HAND OF DOOR AND ESTABLISH CENTER LINE OF PADS ON STILES.
  2. PREPARE STILES PER TEMPLATES:  
10-484 TEMPLATE FOR ACTIVE STILE.  
10-475 TEMPLATE FOR INACTIVE STILE.
  3. DRILL CYLINDER MOUNTING HOLES ONLY IF REQUIRED.
  4. LOCATE CENTER LINE OF CYLINDER ON EXTERIOR SIDE OF ACTIVE STILE AND DRILL IF REQUIRED.
  5. TRIM TAIL PIECE TO FIT AS SHOWN.
  6. MOUNT CYLINDER IN PLACE AND SECURE WITH MOUNTING SCREWS. (SCREWS MUST BE FLUSH WITH DOOR.)
  7. DETERMINE FUNCTION KEY DESIRED:  
A.) REGULAR FUNCTION KEY REMOVABLE IN EITHER LOCKED OR UNLOCKED POSITION. FULLY RELEASE LATCH THEN SET INDEX MARK ON COUPLING BOSS STRAIGHT UP.  
B.) NIGHT LATCH FUNCTION: KEY REMOVABLE IN LOCKED POSITION ONLY. PREFORM STEP 'A,' THEN ROTATE COUPLING BOSS 90° TOWARDS HINGE SIDE.
  8. DRILL .203 (5.15) DIA. AND TAP 1/4-20 THD (4 PLCS.) ON ACTIVE & INACTIVE STILES & INSTALL FOUR (4) 1/4-20(M6-1.0) SHOULDER STUDS. MOUNT ACTIVE PAD TO STILE WITH THREE 1/4-20(M6-1.0)x1/2(12.7) SOC. SET SCREWS.
  9. LOCATE AND DRILL MOUNTING HOLES FOR ADJUSTABLE STRIKE. (CENTER ON LATCH)
  10. MOUNT AND SECURE STRIKE AS SHOWN.
  11. CHECK OPERATION TO ASSURE THAT ALL PARTS AND CYLINDER ARE FUNCTIONING PROPERLY. ADJUST AS REQUIRED.
  12. MOUNT INACTIVE PAD TO STILE WITH THREE (3) 1/4-20 (M6-1.0)x 1/2(12.7) SOC. SET SCREWS.
  13. CUT LENGTH OF PANIC BAR BY MEASURING FROM INSIDE TO INSIDE EDGE OF MOUNTING PADS. 1/32± (.79) FIT TO SIZE.
  14. LOOSEN INACTIVE PAD. INSTALL AND SECURE PANIC BAR WITH TWO 1/4-20(M6-1.0) x 1(25.4) OVAL HD.M.S. (PHIL.) RETIGHTEN PAD SET SCREWS.
- DOGGING INSTRUCTIONS:**  
TO DOG- DEPRESS CROSS BAR TURN KEY TOWARD LOCK SIDE OR PUSH DOGGING PIN UP AND TURN 90° EITHER DIRECTION.  
TO UNDOG- DEPRESS CROSS BAR TURN KEY TOWARD LOCK SIDE OR ROTATE DOGGING PIN UNTIL IT RELEASES.



FUNCTIONAL CYLINDERS	DIM. A
ILCO	1/4(6.35)
LOCKWOOD	
YALE	
GORBIN	
SCHLAGE	
RUSSWIN	
WELCH	
KELL	
SARGENT	3/8(9.52)

FILE NO.	
NEXT ASSY	1095-KITS
QTY. USED	1

E 6.27.03	PICTORIAL SHOWING ROLLER-LESS "S" STRIKE SHOWN	ECN1143	ECN1625	RM
D 6/11/98	R E D R A W N	ECN1143		RM
DIMENSIONAL TOLERANCES UNLESS OTHERWISE SPECIFIED		APPROVALS	DATE	
DECIMAL DIMENSIONS .XX ± .010		APPROVED		
DECIMAL DIMENSIONS .XXX ± .005		CHECKED		
ANGULAR ± X ° FRACTIONAL ± 1/64		DRAWN	RM	6/28/97
MATERIAL		SCALE	NONE	
FINISH		INSTALLATION GUIDE 1095 RIM PANIC DEVICE FOR OFFSET PIVOT x "S" STRIKE		
HEAT TREAT		SHEET 1 OF 1 SHEETS DWG. NO. 10-499 REV. E		

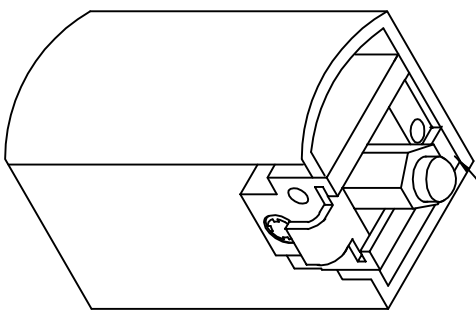








TOP BOLT GUIDE ASSY



**ADJUSTMENT INSTRUCTIONS.**

- B** PLACE ADJUSTMENT WRENCH ONTO BOLT. TURN WRENCH CLOCKWISE TO RETRACT BOLT—COUNTERCLOCKWISE TO EXTEND BOLT.
- C**

NOTE:

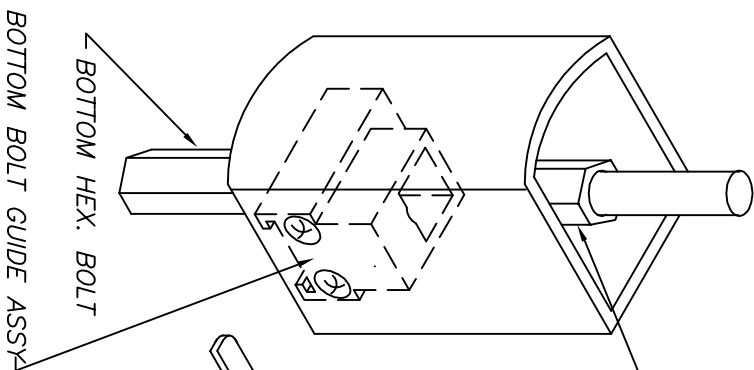
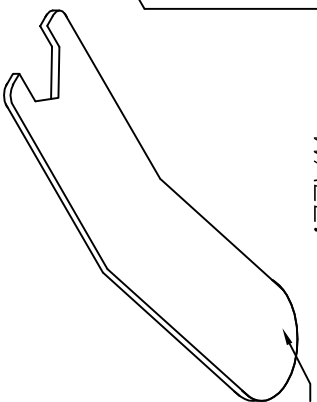
TOP BOLT GUIDE ASSY USED WITH THE FOLLOWING:

1085, 1285, 1206, 2086 & 3186

USAGE: 1085, 2085, 2086,

3185B & 3186, 1285, 1206

NOTE:  
UPON FINAL ADJUSTMENT, ASSURE THAT FLAT ON HEX. BOLT RUNS PARALLEL TO FACE OF STYLE WALL.



BOTTOM HEX. BOLT

BOTTOM BOLT GUIDE ASSY

FILE NO.	FINISH	HEAT TREAT	ADJUSTMENT INSTRUCTIONS	TOP & BTM BOLT GUIDE ASSY	10-860	D
NEXT ASSY.						
QTY. USED	1					
D 11/05/05 UPDATE MODEL USAGE: ADJ 1285 EGN11973 RM C 11/3/97 REVISE ADJ. INSTRUCTIONS EGN1116 RM B 1/5/95 REVISE ADJ. INSTRUCTIONS EGN982 RM DIMENSIONAL TOLERANCES UNLESS OTHERWISE SPECIFIED APPROVALS DATE DECIMAL DIMENSIONS .XX ± .010 CHECKED DECIMAL DIMENSIONS .XXX ± .005 DRAWN R.M. 11/4/95 ANGULAR ± ° FRACTIONAL ± 1/64 SCALE NONE MATERIAL FINISH HEAT TREAT ADJUSTMENT INSTRUCTIONS TOP & BTM BOLT GUIDE ASSY 10-860 D						
JACKSON CORPORATION 3447 UNION PACIFIC AVE. LOS ANGELES, CALIF. 90023			SHEET 1 OF 1 SHEETS DWG. NO. REV.			