

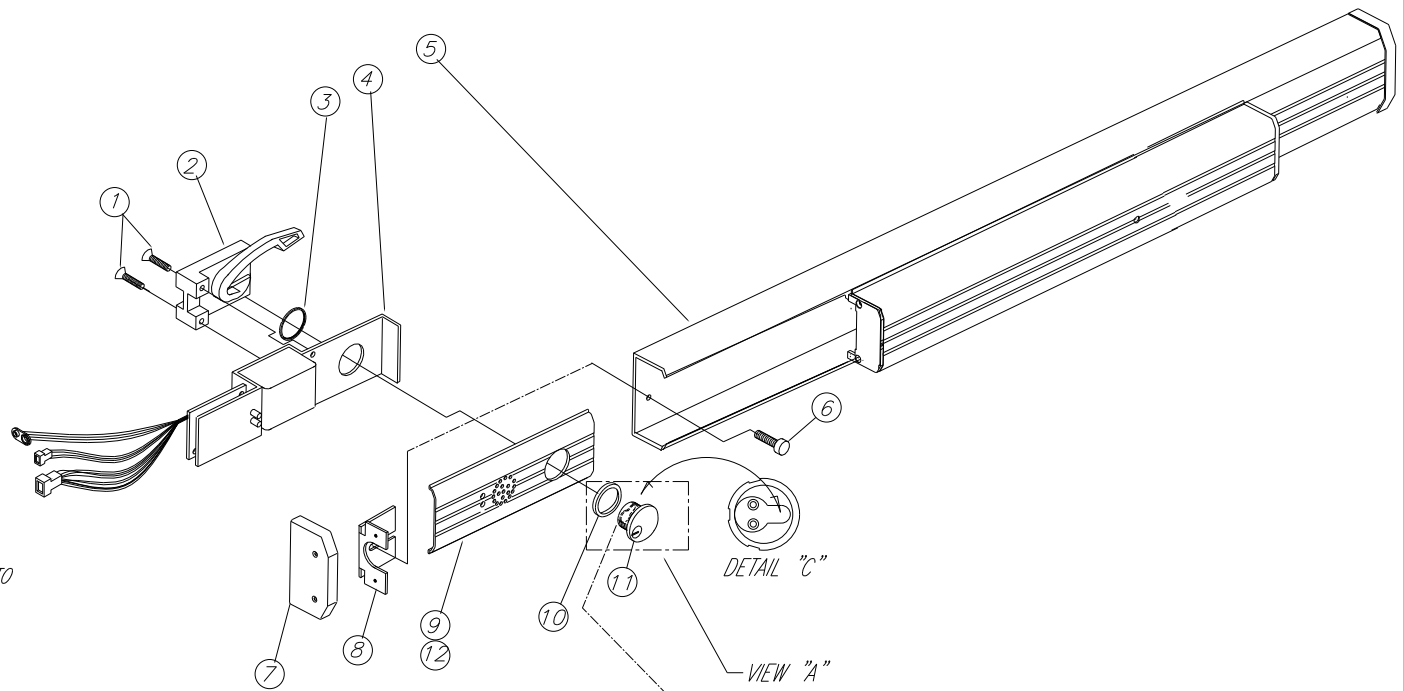
INSTALLATION INSTRUCTIONS:

1. REMOVE PANIC ASSEMBLY FROM DOOR STILE.
2. REMOVE INACTIVE BASE COVER.
3. SLIDE-OUT REAR END BASE COVER

CYLINDER INSTALLMENT

1. REMOVE (2) SCREWS 10-32 x 1" F.H.M. FROM ALARM SUB-ASS'Y. (CAM BRACKET ASSEMBLY)
2. POSITION CYLINDER RING AS PER VIEW "A", INSERT MORTISE CYLINDER WITH CAM POSITIONED AS PER DETAIL "C"
3. THREAD ON LOCK RING AS SHOWN.
4. RE-ATTACH CAM BRACKET SUB-ASS'Y

NOTES: 1. THE KEY SHOULD TURN EASILY IN BOTH DIRECTIONS.
 2. CAUTION-EA (EXIT ALARM) MODELS HAVE ELECTRONIC COMPONENTS SUSCEPTIBLE TO DAMAGE.



OPERATION INSTRUCTIONS:

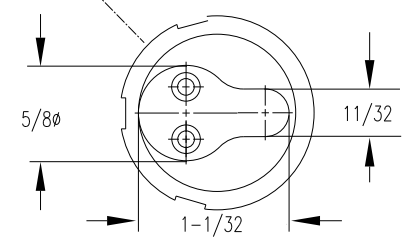
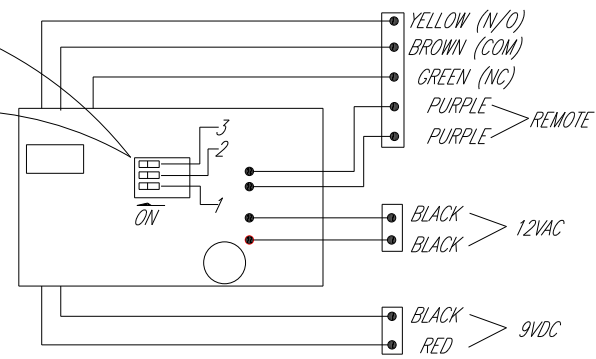
1. **POWER:** THIS UNIT WILL OPERATE ON A 9V BATTERY. HOWEVER, IT MAY BE HARDWIRED TO 12V AC/DC. 9V BATTERY MUST BE USED TO AVOID "LOW BATTERY" CHIRPING.
2. **EXTERNAL SIGNAL SWITCH:** A RELAY IS PROVIDED AND IS ACTIVATED WHEN THE PUSH PAD IS DEPRESSED. IT WILL REMAIN ACTIVATED UNTIL ALARM IS DISARMED OR REARMED. RELAY IS SIZED FOR 1A@24V.
3. **DIP SWITCH 1:** SETS ARM DELAY. IF SWITCH 1 IS OFF, THE DEVICE WILL BE FULLY ACTIVE 15 SECONDS AFTER YOU TURN THE KEY CYLINDER. IF SWITCH 1 IS ON, THE DEVICE WILL BE FULLY ACTIVE AFTER 60 SECONDS.
4. **DIP SWITCHES 2 & 3:** SETS THE AUTO REARMING FEATURE. OPTIONS ARE AS FOLLOWS:

SWITCH 2	SWITCH 3	ALARM WILL AUTOMATICALLY REARM AFTER 2 MINUTES.
OFF	OFF	ALARM WILL AUTOMATICALLY REARM AFTER 10 MINUTES.
ON	OFF	ALARM WILL SOUND CONTINUOUSLY UNTIL IT IS RESET.

ALARM OPERATIONS:

ATTACH THE BATTERY TO THE CONNECTOR.

1. TURN KEY COUNTERCLOCKWISE AND THEN REMOVE KEY. GREEN LED WILL GLOW FOR THE ARM DELAY PERIOD FOLLOWED BY 3 SHORT CHIRPS. ALARM IS NOW ARMED.
2. DEPRESS PUSH PAD, ALARM SIREN WILL SOUND AND RED LED WILL ILLUMINATE.
3. TURN KEY CLOCKWISE. SIREN WILL STOP AND RED LED WILL TURN OFF. ALARM IS NOW DISARMED AND RED LED WILL DOUBLE-BLINK AT REGULAR INTERVALS.
4. **AUTO-REARM TEST:** REPEAT STEPS 1 & 2. AFTER APPROXIMATELY 2 MINUTES OR TEN MINUTES, A SELECTED, ALARM WILL TURN OFF SIREN AND RED LED. ALARM WILL THEN REARM AS DESCRIBED IN STEP 1.
5. **LOW BATTERY ALERT FEATURE:** SIREN WILL CHIRP AT REGULAR INTERVALS TO SIGNAL THAT THE BATTERY VOLTAGE HAS DROPPED BELOW 7 VOLTS DC.



DETAIL "C"
CAM PROFILE

DIMENSIONAL TOLERANCES UNLESS OTHERWISE SPECIFIED	APPROVALS	DATE
DECIMAL DIMENSIONS .XX ± .010	APPROVED	
DECIMAL DIMENSIONS .XXX ± .005	CHECKED	
ANGULAR ± ° FRACTIONAL ± 1/32	DRAWN	RM 07.18.03

FILE NO.	MATERIAL	SCALE	NONE	INSTALLMENT GUIDE 1200 SER. ALARM UNIT	SHEET 1 OF 2 SHEETS DWG. NO. 10-1031 REV. A
NEXT ASSY.	FINISH				
QTY. USED	HEAT TREAT				



