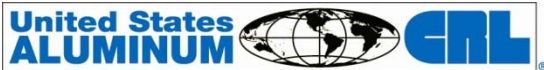


PRESS RELEASE



September 23, 2011

For immediate release

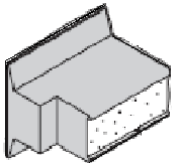
Contact: Greg Rewers, Vice President of Marketing

greg_rewers@crlaurence.com

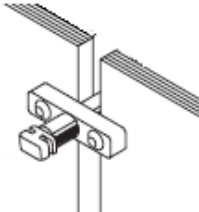
Whether You Need Low U-Factor, an “All-Glass” Look, Superior Water Performance, Great Design, or Labor-Saving Installation, U.S. Aluminum’s Curtain Wall Systems are the Right Choice

U.S. Aluminum (USAL), a division of C.R. Laurence (CRL), offers a wide range of Curtain Wall Systems based on over 50 years of industry experience. Known for smart, customer-focused engineering, USAL’s Curtain Wall product range offers a rich selection of features for an expansive range of applications including commercial, hospitality, government, and public facilities.

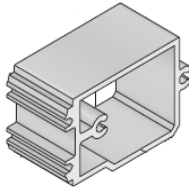
As is the case with many quality performance products, it’s the details that count. USAL understands this which is why USAL uses injection-molded water deflectors, reusable and patented twist-on temporary glass retainers, extruded shear blocks for added stability, and E.P.D.M. top-loading gaskets that sustain their shape and integrity for years of reliable performance.



Injection-Molded Water Deflector



Patented Twist-On Glass Retainer



Extruded Shear Block Adds Stability



Vinyl side load gaskets can fall out. USAL uses Top-Loading E.P.D.M. Gaskets.

The Series 2100 and 2200 Curtain Walls offer exterior glazed and thermally improved systems for low to mid-rise buildings. The 2100 is vertically butt glazed while the 2200 is capture glazed. Both systems work with 1" glazing, utilize injection molded water deflectors, shear block assembly, pressure bar glazing, and the use of concealed fasteners adds to a clean visual presentation.



Series 2100



Series 2200

The Series 3150 and 3250 Curtain Wall Systems offer either 1/4" or 1" glazing with 2-1/2" wide by up to 10" deep members. The 3150 is vertically butt glazed with a narrow 3/8" wide silicone joint. The 3250 is capture glazed. Both systems utilize injection molded water deflectors, shear block assembly, pressure bar glazing, and concealed fasteners.



Series 3150/3250

The BW3250 Blast Resistant and IW3250 Hurricane Resistant Curtain Walls offer unparalleled protection from both natural and manmade events. The BW3250 is UFC 4-010-01 compliant. The IW3250 has passed both large and small missile tests. Both systems are based on the popular 3250 series ideal for low to mid-rise buildings.



BW3250 Blast Resistant
IW3250 Hurricane Resistant



The new HP3253 High Performance Curtain Wall accommodates 2" triple pane glazing, which is coupled with Dual Thermal Break Technology for .32 U-Factor (NFRC100), resulting in a very low level of heat loss. The HP3253 utilizes 2-1/2" wide by up to 11" deep members and offers exterior glazing, injection molded water deflectors, no exposed fasteners, and optional vertical butt-glazing.



System HP3253

The Series 4250 and 4250T (Thermal) Curtain Walls are interior glazed utilizing a pocket set design and E.P.D.M. compression gaskets. For energy conservation, they employ Poly-Aluminizer™ Pour and Debridge thermal break technology. These systems utilize 2-1/2" wide by 6" deep members, injection molded water deflectors, extruded shear blocks, and hidden fasteners for a sharp visual presentation.



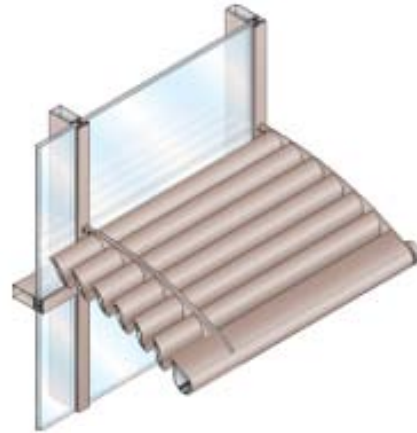
Series 4250/4250T

The Series 4500 (1" glazing) and 4525 (1/4" glazing) Curtain Walls offer exceptional water performance, passing 20 PSF. The unique integral UNIfash™ System incorporates a face cap that snaps into a thermal clip. The members are designed to literally sweep away water. The 2-1/4" wide member offers a savings in material compared to traditional 2-1/2" systems, and the snap-in UNIfash™ System enables up to 20%-30% in installation labor savings compared to pressure bar glazing.



Series 4500/4525

In addition to Curtain Walls, USAL offers the 3600 Sunshade System. This system reduces exposure to direct UV rays while allowing ambient light to enter the glazing system. The 3600 features a choice of outrigger profiles with a variety of louvers, fascias, and finishes. In addition, with CRL's vast selection of Sunshades, Wall Panel Cladding Systems, Column Covers, and Perforated Panel Systems, the only limit to a design is one's imagination.



Series 3600 Sunshade



CRL's AM09 Architectural Metal catalog offers a complete selection of Sunshades, Wall Panel Cladding Systems, Column Covers, and Perforated Panel Systems

U.S. Aluminum's 11 manufacturing and service centers are located across the U.S. and Canada. Technical and fabrication specialists are on call to answer your questions about any of these systems, and can be reached through a national toll free phone number (800) 262-5151. For more information you're also invited to visit usalum.com. USAL is a subsidiary of C.R. Laurence, a leading global manufacturer and supplier to the glazing, architectural, railing, construction, industrial, and automotive industries. Its web site is a proven resource for the worldwide glass and glazing industry at crlaurence.com.